
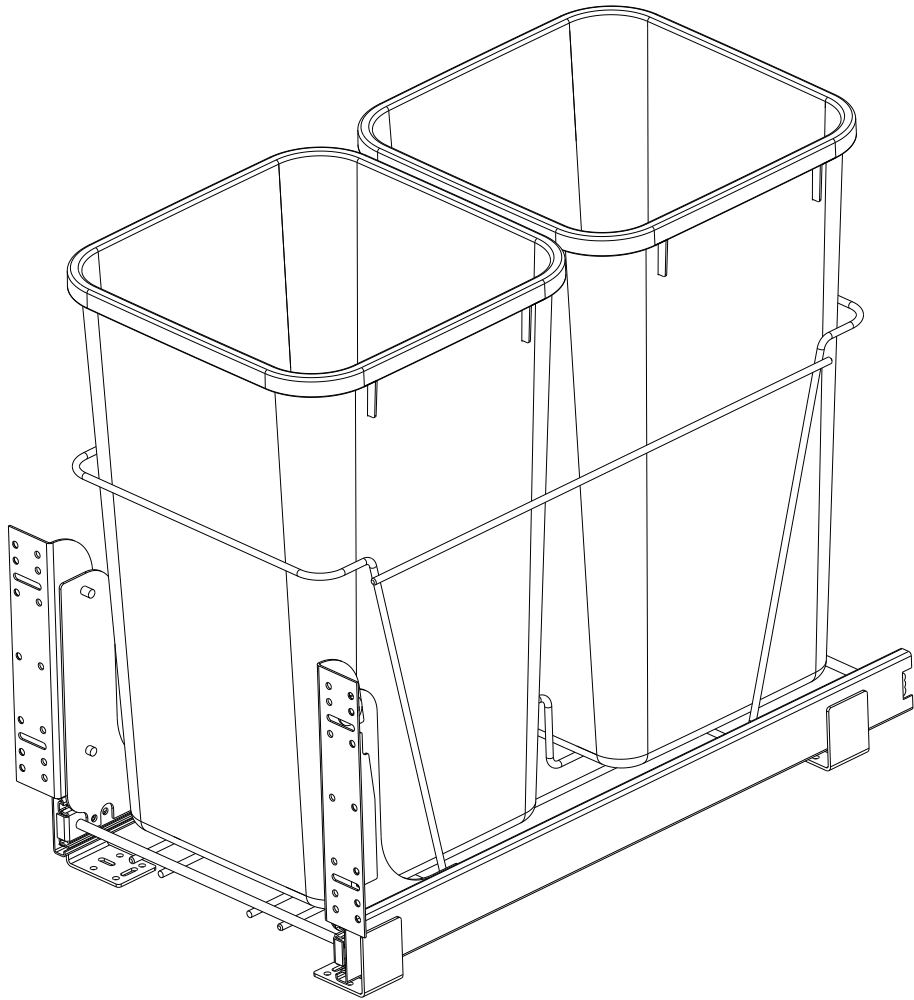


CUSTOMER DRAWING

This drawing is the property of Rev-A-Shelf (RAS) and is disclosed in confidence to the extent its subject matter is original to RAS. Any vendor receiving this drawing from RAS shall hold and use this drawing for the sole benefit of RAS and shall not disclose it to, or use or reproduce it for any third party, or perform any act adverse to the interest of RAS with respect to this drawing without the express written permission of RAS. Vendors shall not revise any physical, dimensional or performance characteristic unless authorized by Rev-A-Shelf Engineering.

REV.	DATE	BY	DESCRIPTION OF CHANGE

INCH [MM]	AMERICAN PROJECTION 		BY	DATE	REV-A-SHELF <sup>®</sup> , INC.	
		DRAWN	LCS	6/09/22	SIZE B	DOUBLE 27QT WIRE PULLOUT
TOLERANCES		ANGLES ±1/2°	MATERIAL		DRAWING NO.	SCALE
MAT. DEC.			FINISH		PART NO.	SHEET OF
(WOOD) .XX ±.03 [.8mm]					RV-15PB-2 S	0.188
(OTHER) .XX ±.02 [.5mm]					RV-15PB-2 S	1 2
(ALL) .XXX ±.005 [.13 mm]						
FRACTIONS ±1/32 [.8 mm]						



PART DIMENSIONS	
WIDTH	11.78 [299,1]
DEPTH	22.31 [566,7]
HEIGHT	19.16 [486,7]
CONTAINER CAPACITY	27
CONTAINER UOM	QT

MIN CABINET OPENING				
	FACE FRAME	FRAMELESS	INSET FACE FRAME	INSET FRAMELESS
WIDTH	11.78 [299,1]	11.78 [299,1]	11.78 [299,1]	11.78 [299,1]
DEPTH	22.31 [566,7]	22.31 [566,7]	23.06 [585,8]	23.06 [585,8]
HEIGHT	19.50 [495.3]	19.50 [495.3]	19.50 [495.3]	19.50 [495.3]

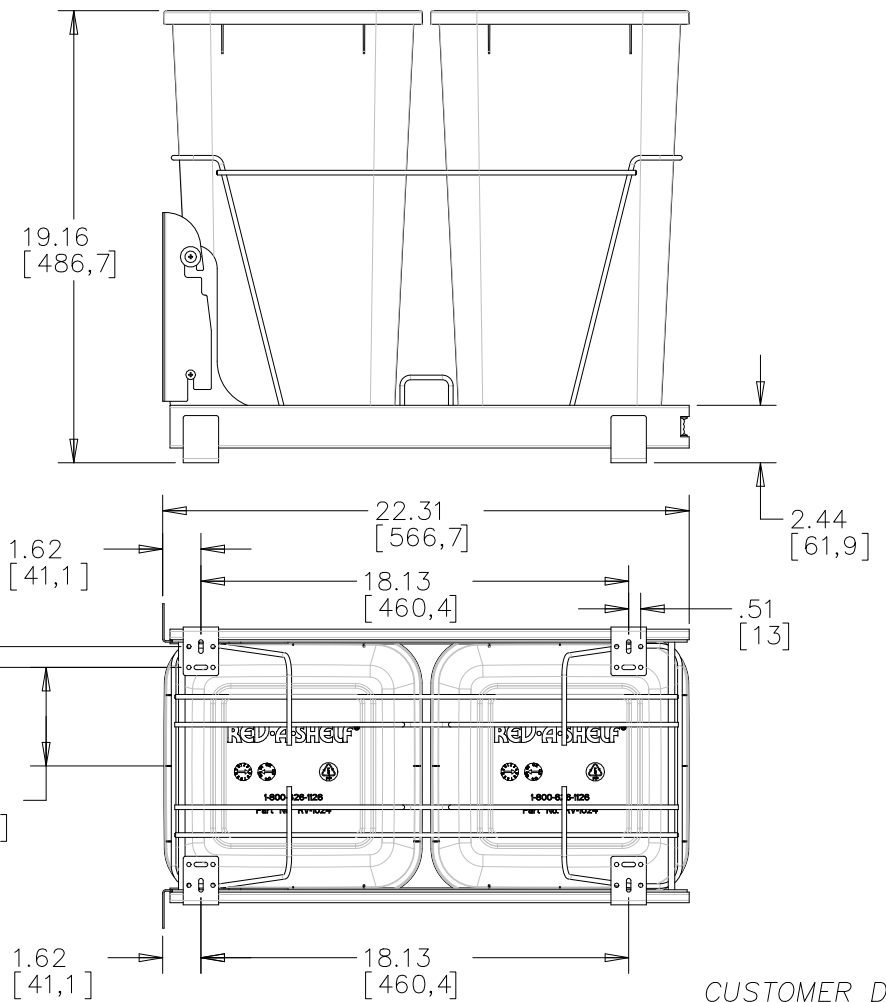
SLIDE SPECIFICATIONS				
SLIDE MANUFACTURER	ACCURIDE			
SLIDE PART NUMBER	3832-919X	RELEASE PART NUMBER	N/A	
SLIDE TYPE	BALL BEARING	SLIDE EXTENSION	FULL EXTENSION	MAX WEIGHT RATING
SLIDE CLOSING	N/A	SLIDE LENGTH	22.00 [559,0]	
SLIDE MOUNTING	BOTTOM	SLIDE FINISH	WHITE E-COAT	100LB

CUSTOMER DRAWING

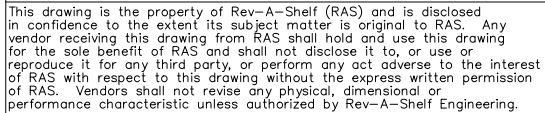
This drawing is the property of Rev-A-Shelf (RAS) and is disclosed in confidence to the extent its subject matter is original to RAS. Any vendor receiving this drawing from RAS shall hold and use this drawing for the sole benefit of RAS and shall not disclose it to, or use or reproduce it for any third party, or perform any act adverse to the interest of RAS with respect to this drawing without the express written permission of RAS. Vendors shall not revise any physical, dimensional or performance characteristic unless authorized by Rev-A-Shelf Engineering.

REV.	DATE	BY	DESCRIPTION OF CHANGE

INCH [MM]	AMERICAN PROJECTION	DRAWN	BY	DATE	REV-A-SHELF, INC.	
			LCS	6/09/22	SIZE	
					B	DOUBLE 27QT WIRE PULLOUT
<div>TOLERANCES MAT. DEC. (WOOD) .XX ±.03 [.8mm] (OTHER) .XX ±.02 [.5mm] (ALL) .XXX ±.005 [.13 mm] FRACTIONS ±1/32 [.8 mm]</div>			MATERIAL		DRAWING NO.	SCALE
			FINISH		RV-15PB-2 S	0.188
					PART NO.	SHEET OF
					RV-15PB-2 S	2 OF 2



						NOMINAL [MM]		DRAWN	ECS 67097	SIZE	DOUBLE 27QT WIRE	
						MAT. (WOOD) .XX ±.03 [8mm] (OTHER) .XX ±.02 [5mm] (ALL) .XXX ±.05 [13 mm] FRACTIONS 1/32 [.8 mm]	DEC.	TOLERANCE	MATERIAL	ANGLES	DRAWING NO.	RV-15PB-20S188
REV.	DATE	BY				DESCRIPTION OF CHANGE			FINISH	PART NO.	RV-15PB-2 S1 2	

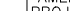


PART DIMENSIONS	
WIDTH	11.78 [299,1]
DEPTH	22.31 [566,7]
HEIGHT	19.16 [486,7]
CONTAINER CAPACITY	27
CONTAINER UOM	QT

MIN CABINET OPENING								
	FACE FRAME		FRAMELESS		INSET FACE FRAME		INSET FRAMELESS	
WIDTH	11.78	[299,1]	11.78	[299,1]	11.78	[299,1]	11.78	[299,1]
DEPTH	22.31	[566,7]	22.31	[566,7]	23.06	[585,8]	23.06	[585,8]
HEIGHT	19.50	[495,3]	19.50	[495,3]	19.50	[495,3]	19.50	[495,3]

SLIDE SPECIFICATIONS				
SLIDE MANUFACTURER	ACE			
SLIDE PART NUMBER	5832-919X	RELEASE PART NUMBER		
SLIDE TYPE	BALL BEARING	SLIDE EXTENSION	FULL EXTENSION	MAX WEIGHT RATING
SLIDE CLOSING	N/A	SLIDE LENGTH	22.00 [559,0]	
SLIDE MOUNTING	BOTTOM	SLIDE FINISH	WHITE E-COAT	
				100LB

## CUSTOMER DRAWING

				INCH [MM]	AMERICAN PROJECTION 	DRAWN	BY	DATE	REV-A-SHELF, INC.	
							LCS 6/09/22	SIZE B	DOUBLE 27QT WIRE	
				MAT. DEC. (WOOD) .XX ±.03 [8mm] ±1/2 (OTHER) .XX.02 [5mm] (ALL) .XX±.005 [1.3 mm] FRACTIONS ±1/32 [0.8 mm]	TOLERANCE	MATERIAL	ANGLES	DRAWING NO.		RV-15PB-20S188
REV.	DATE	BY	DESCRIPTION OF CHANGE					FINISH	PART NO.	

PULL  
SCALE  
S