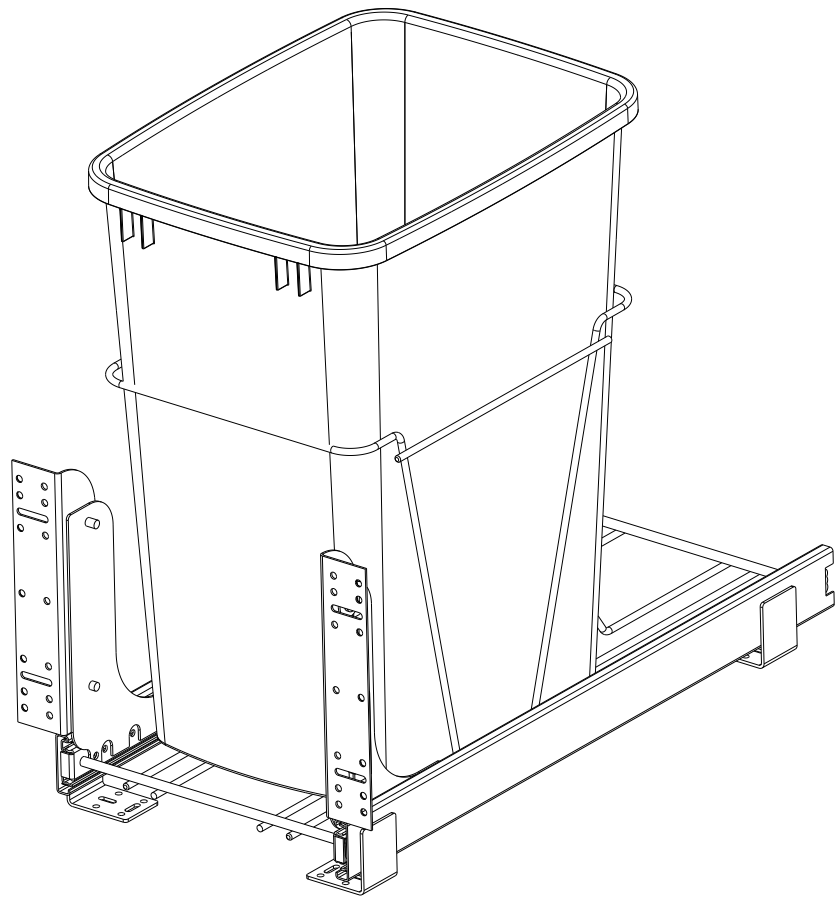


CUSTOMER DRAWING

This drawing is the property of Rev-A-Shelf (RAS) and is disclosed in confidence to the extent its subject matter is original to RAS. Any vendor receiving this drawing from RAS shall hold and use this drawing for the sole benefit of RAS and shall not disclose it to, or use or reproduce it for any third party, or perform any act adverse to the interest of RAS with respect to this drawing without the express written permission of RAS. Vendors shall not revise any physical, dimensional or performance characteristic unless authorized by Rev-A-Shelf Engineering.

REV.	DATE	BY	DESCRIPTION OF CHANGE	INCH [MM]	AMERICAN PROJECTION	DRAWN	BY	DATE	REV-A-SHELF, INC.	
							LCS	6/08/22	SIZE B	SINGLE 35QT WIRE PULLOUT
									DRAWING NO.	RV-12PB S
									PART NO.	RV-12PB S
									SCALE	0.188
									SHEET OF	1 2

MAT.	DEC.	TOLERANCES	ANGLES	MATERIAL	FINISH
(WOOD)	.XX	±.03 [.8mm]	±1/2°		
(OTHER)	.XX	±.02 [.5mm]			
(ALL)	.XXX	±.005 [.13 mm]			
FRACTIONS		±1/32 [.8 mm]			



PART DIMENSIONS	
WIDTH	10.46 [265,7]
DEPTH	22.31 [566,7]
HEIGHT	19.26 [489,3]
CONTAINER CAPACITY	35
CONTAINER UOM	QT


MIN CABINET OPENING				
	FACE FRAME	FRAMELESS	INSET FACE FRAME	INSET FRAMELESS
WIDTH	11.00 [279,4]	11.00 [279,4]	11.00 [279,4]	11.00 [279,4]
DEPTH	22.31 [566,7]	22.31 [566,7]	23.06 [585,8]	23.06 [585,8]
HEIGHT	19.50 [495.3]	19.50 [495.3]	19.50 [495.3]	19.50 [495.3]

SLIDE SPECIFICATIONS				
SLIDE MANUFACTURER	ACCURIDE			
SLIDE PART NUMBER	3832-919X	RELEASE PART NUMBER	N/A	
SLIDE TYPE	BALL BEARING	SLIDE EXTENSION	FULL EXTENSION	MAX WEIGHT RATING
SLIDE CLOSING	N/A	SLIDE LENGTH	22.00 [559,0]	
SLIDE MOUNTING	BOTTOM	SLIDE FINISH	WHITE E-COAT	100LB

CUSTOMER DRAWING

This drawing is the property of Rev-A-Shelf (RAS) and is disclosed in confidence to the extent its subject matter is original to RAS. Any vendor receiving this drawing from RAS shall hold and use this drawing for the sole benefit of RAS and shall not disclose it to, or use or reproduce it for any third party, or perform any act adverse to the interest of RAS with respect to this drawing without the express written permission of RAS. Vendors shall not revise any physical, dimensional or performance characteristic unless authorized by Rev-A-Shelf Engineering.

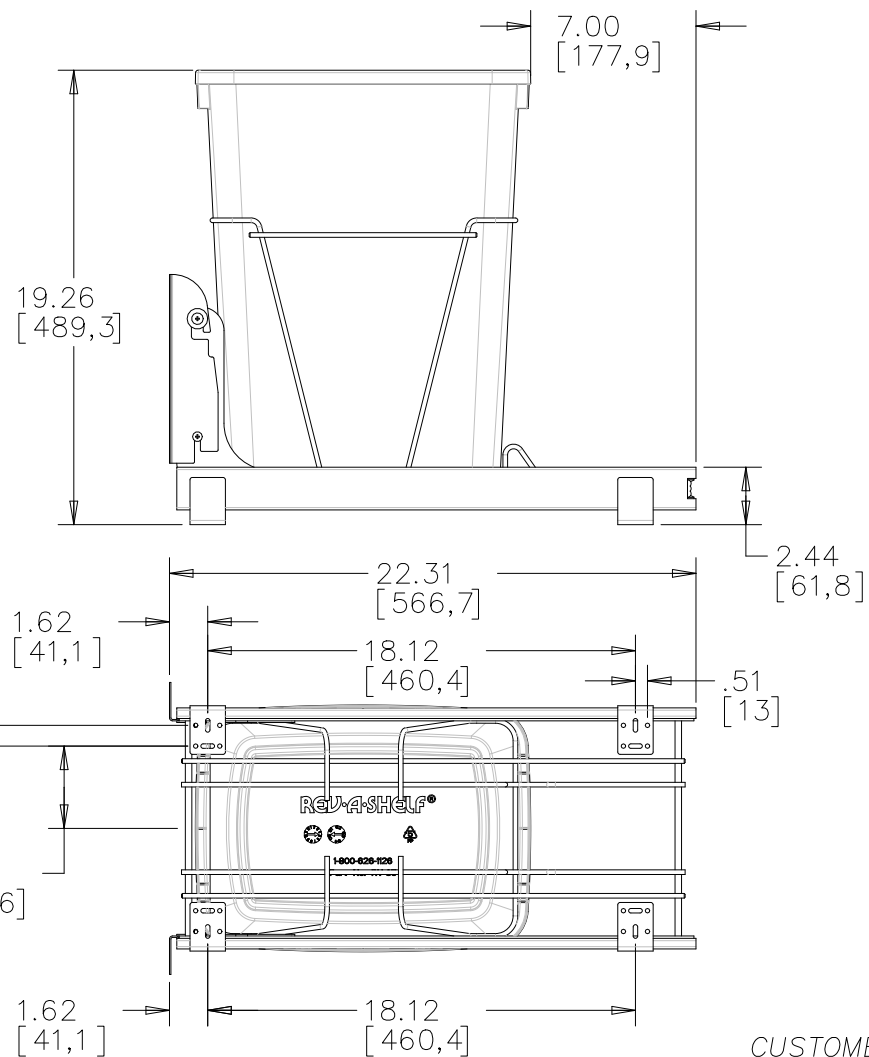
REV.	DATE	BY	DESCRIPTION OF CHANGE


INCH [MM]		DRAWN	BY	DATE	REV-A-SHELF®, INC.		
			LCS	6/08/22	SIZE B	SINGLE 35QT WIRE PULLOUT	
<p>TOLERANCES</p> <p>MAT. DEC. ANGLES ±1/2°</p> <p>(WOOD) .XX ±.03 [.8mm]</p> <p>(OTHER) .XX ±.02 [.5mm]</p> <p>(ALL) .XXX ±.005 [.13 mm]</p> <p>FRACTIONS ±1/32 [.8 mm]</p>		MATERIAL		DRAWING NO.	SCALE		
		FINISH		RV-12PB S	0.188		
		PART NO.	SHEET OF				
				RV-12PB S	2 2		

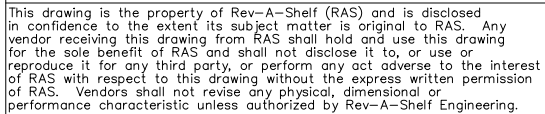


TOLERANCES
MAT. DEC.
(WOOD) .XX ±.03 [.8mm]
(OTHER) .XX ±.02 [.5mm]
(ALL) .XXX ±.005 [.13 mm]
FRACTIONS ±1/32 [.8 mm]

ANGLES
±1/2°



					RCH [MM]		DRAWN	LCS 6/00/	SIZE B	SINGLE 35QT WIRE PULLOUT	
							TOLERANCE	MATERIAL	DRAWING NO.	RV-12PB	9.188
							ANGLES		PART NO.	RV-12PB	S 1 2
REV.	DATE	BY		DESCRIPTION OF CHANGE							



REV.	DATE	BY	DESCRIPTION OF CHANGE