
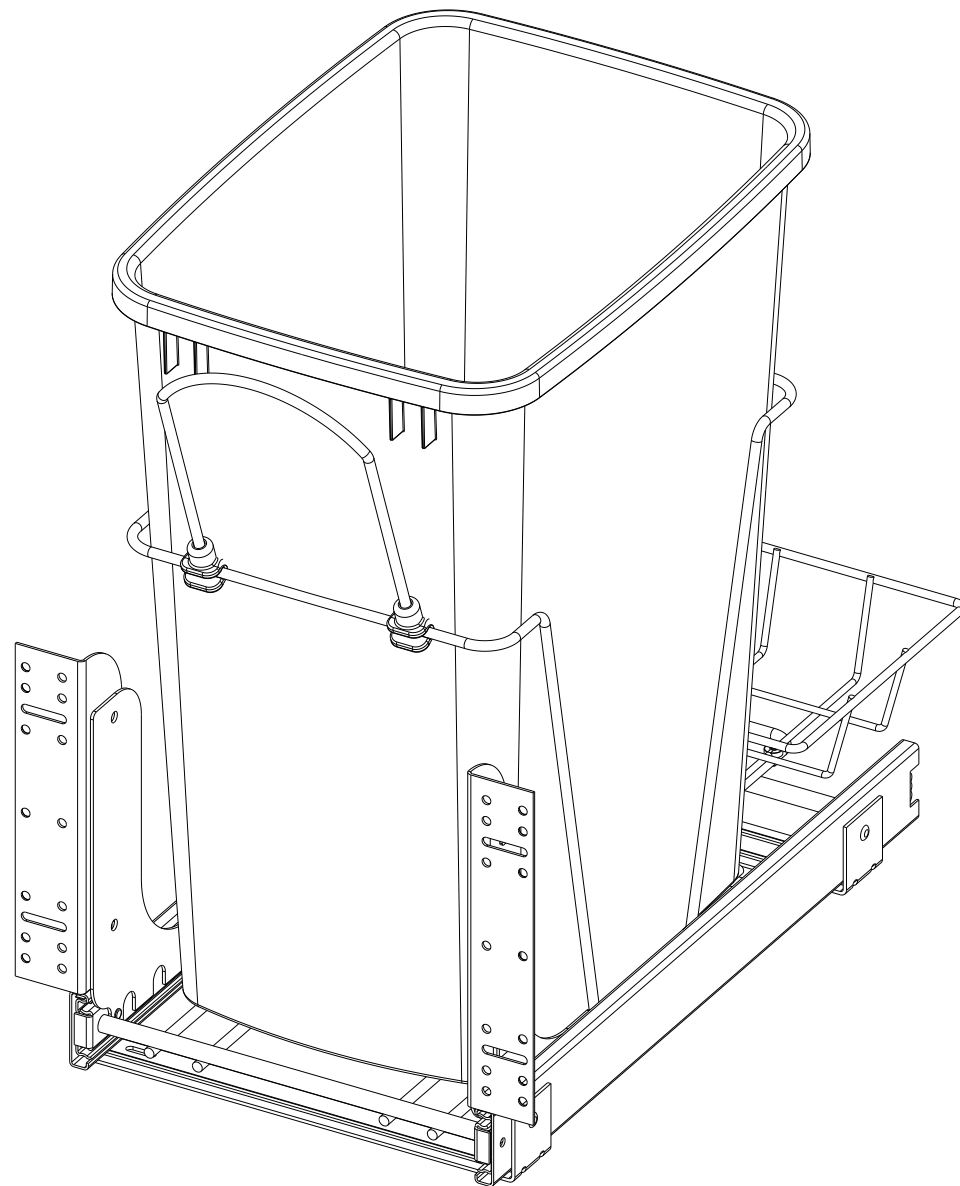


CUSTOMER DRAWING

This drawing is the property of Rev-A-Shelf (RAS) and is disclosed in confidence to the extent its subject matter is original to RAS. Any vendor receiving this drawing from RAS shall hold and use this drawing for the sole benefit of RAS and shall not disclose it to, or use or reproduce it for any third party, or perform any act adverse to the interest of RAS with respect to this drawing without the express written permission of RAS. Vendors shall not revise any physical, dimensional or performance characteristic unless authorized by Rev-A-Shelf Engineering.

REV.	DATE	BY	DESCRIPTION OF CHANGE
E	7-2-18	KRR	ECN18-033

INCH [MM]	AMERICAN PROJECTION 		BY	DATE	REV-A-SHELF <sup>®</sup> , INC.		
		DRAWN	PFC	2/16/11	SIZE	RV12 WITH REAR BASKET CHROME	
					B		
TOLERANCES MAT. DEC. (WOOD) .XX ±.03 [.8mm] (OTHER) .XX ±.02 [.5mm] (ALL) .XXX ±.005 [.13 mm] FRACTIONS ±1/32 [.8 mm]		ANGLES ±1/2°	MATERIAL		DRAWING NO. RV-12KD-17C_S		SCALE 0.175
			FINISH CHROME		PART NO. RV-12KD-17C_S		SHEET 1 OF 2



PART DIMENSIONS		
	MIN	MAX
WIDTH	10.46	
DEPTH	21.11	
HEIGHT	18.82	
WEIGHT		
DIAMETER		
RADIUS		
CONTAINER CAPACITY	35	
CONTAINER UOM	QT	

MIN CABINET OPENING	
WIDTH	11.00
DEPTH	21.11
HEIGHT	19.25

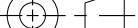
PRODUCT MAX WEIGHT RATING

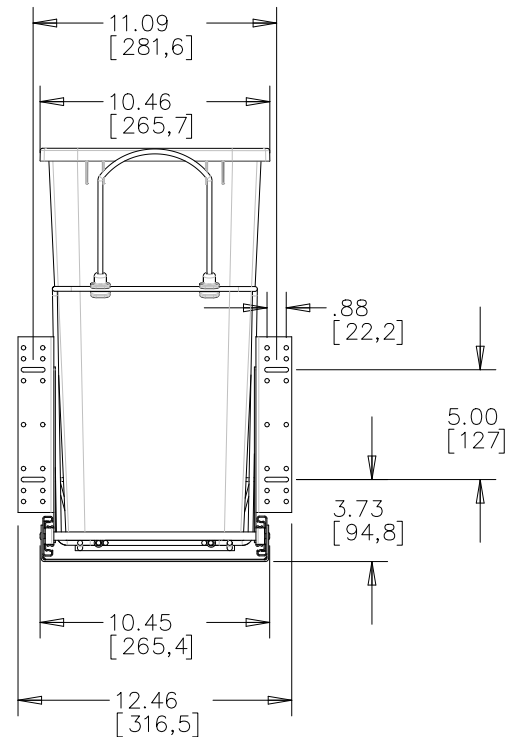
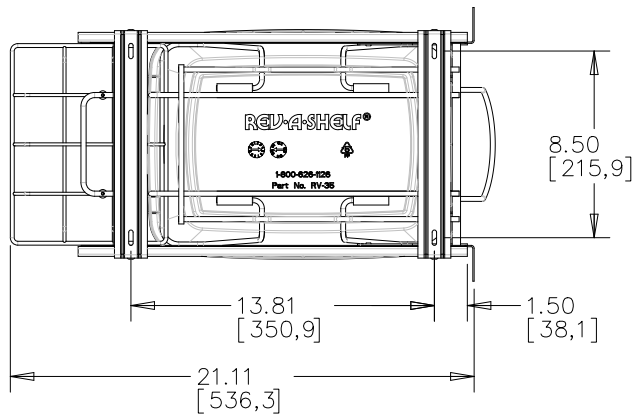
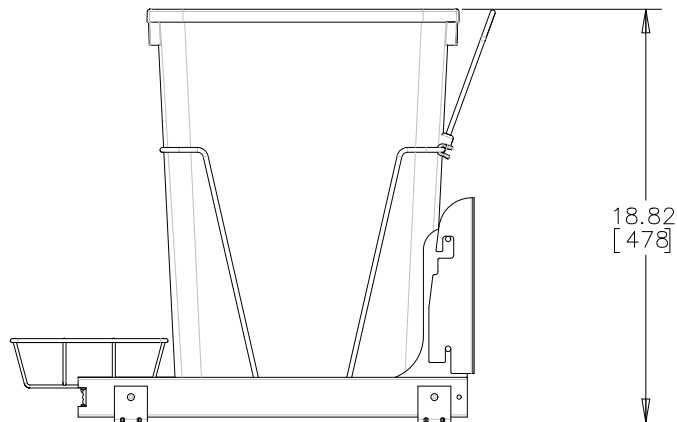
SLIDE SPECIFICATIONS				
SLIDE TYPE	BALL BEARING	SLIDE EXTENSION	FULL EXTENSION	MAX WEIGHT RATING
SLIDE CLOSING	NONE	SLIDE LENGTH	17.75"	
SLIDE MOUNTING	STRAP	SLIDE FINISH	ZINC	

CUSTOMER DRAWING

This drawing is the property of Rev-A-Shelf (RAS) and is disclosed in confidence to the extent its subject matter is original to RAS. Any vendor receiving this drawing from RAS shall hold and use this drawing for the sole benefit of RAS and shall not disclose it to, or use or reproduce it for any third party, or perform any act adverse to the interest of RAS with respect to this drawing without the express written permission of RAS. Vendors shall not revise any physical, dimensional or performance characteristic unless authorized by Rev-A-Shelf Engineering.

E	7-2-18	KRR	ECN18-033
REV.	DATE	BY	DESCRIPTION OF CHANGE

INCH [MM]	AMERICAN PROJECTION 		BY	DATE	REV. A. SHELF <sup>®</sup> , INC.	
		DRAWN	PFC	2/16/11		
					SIZE <b>B</b>	RV12 WITH REAR BASKET CHROME
TOLERANCES MAT. DEC. (WOOD) .XX ±.03 [.8mm] (OTHER) .XX ±.02 [.5mm] (ALL) .XXX ±.005 [.13 mm] FRACTIONS ±1/32 [.8 mm]		ANGLES ±1/2°	MATERIAL	DRAWING NO. RV-12KD-17C-S		SCALE 0.250
			FINISH	PART NO. RV-12KD-17C-S		SHEET 2 OF 2

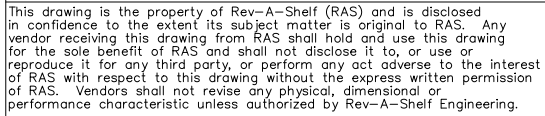


This drawing is the property of Rev-A-Shelf (RAS) and is disclosed in confidence to the extent its subject matter is original to RAS. Any vendor receiving this drawing from RAS shall hold and use this drawing for the sole benefit of RAS and shall not disclose it to, or use or reproduce it for any third party, or perform any act adverse to the interest of RAS with respect to this drawing without the express written permission of RAS. Vendors shall not revise any physical, dimensional or performance characteristic unless authorized by Rev-A-Shelf Engineering.

REV.	DATE	BY	DESCRIPTION OF CHANGE	INCH [MM]	AMERICAN PROJECTION	DRAWN	BY	DATE	REV-A-SHELF, INC.
E	7-2-18	BRR	ECN18-033			PFC	2/16/11	SIZE B	RV12 WITH REAR BASKET CHROME
				TOLERANCES		MATERIAL		ANGLES	DRAWING NO.
				FINISH		CHROME			PART NO.
									RV-12KD-17C_\$ 2

CUSTOMER DRAWING

SCALE

[illegible]

SCALE

5