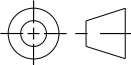


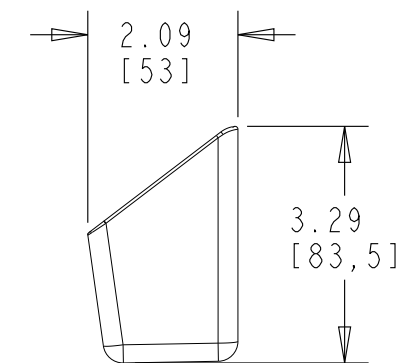
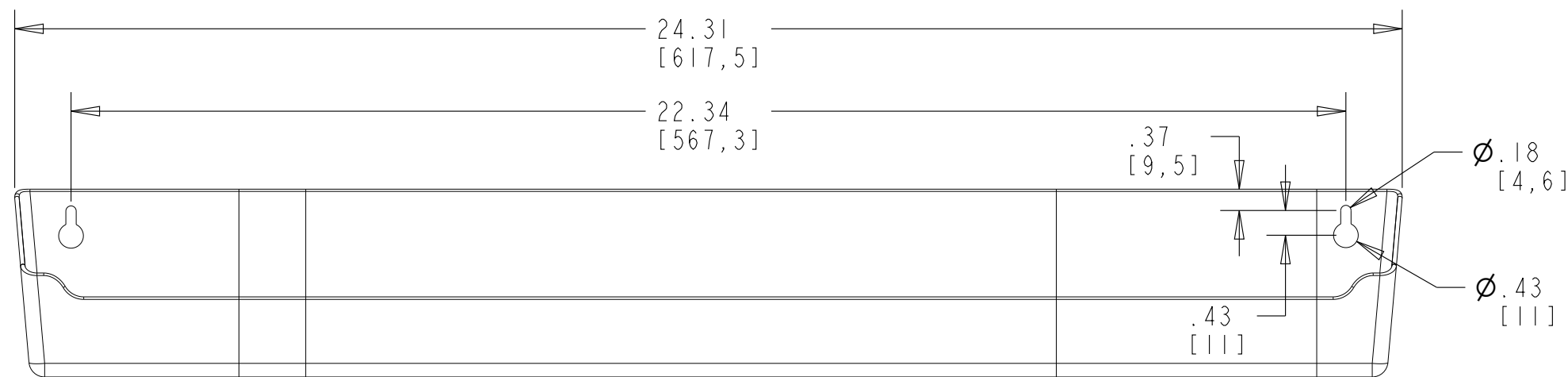
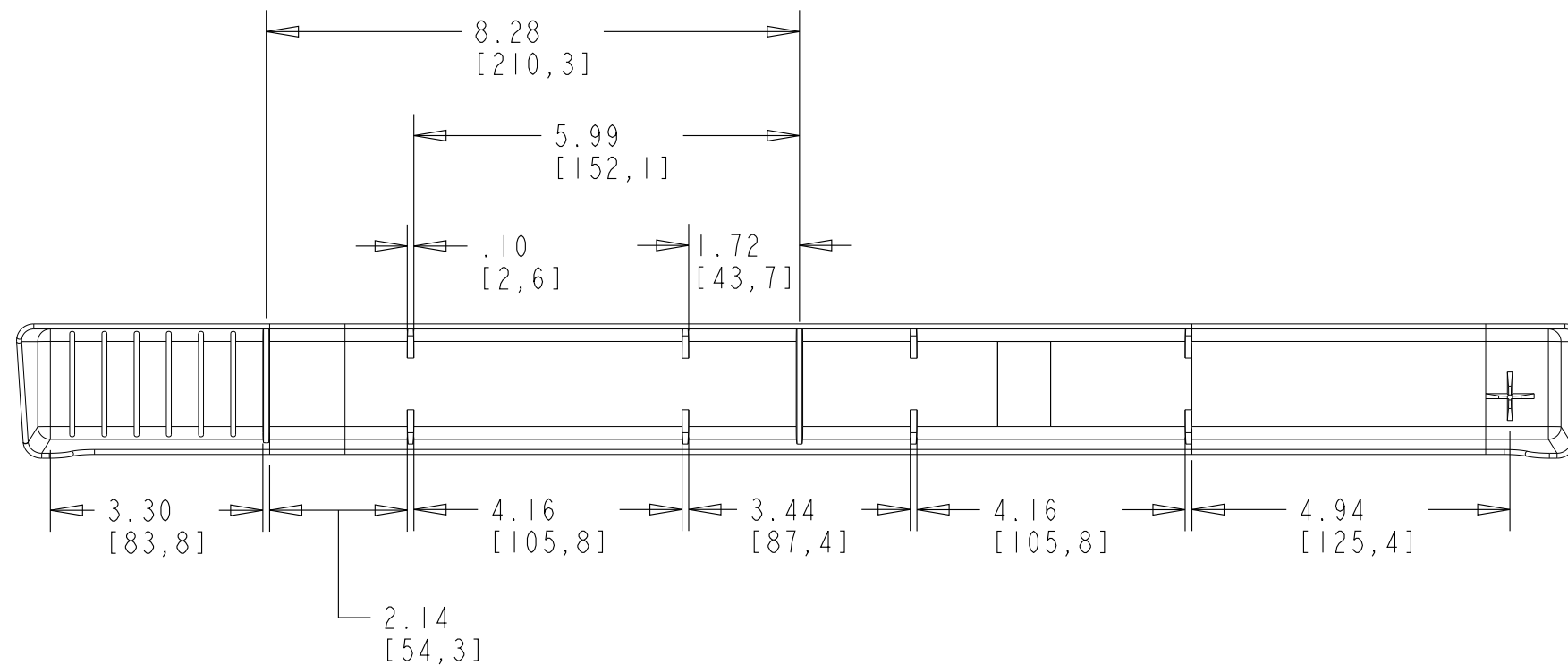
NOTE: RH VERSION SHOWN.  
LH IS SYMMETRICAL.

CUSTOMER DRAWING

This drawing is the property of Rev-A-Shelf (RAS) and is disclosed in confidence to the extent its subject matter is original to RAS. Any vendor receiving this drawing from RAS shall hold and use this drawing for the sole benefit of RAS and shall not disclose it to, or use or reproduce it for any third party, or perform any act adverse to the interest of RAS with respect to this drawing without the express written permission of RAS. Vendors shall not revise any physical, dimensional or performance characteristic unless authorized by Rev-A-Shelf Engineering.

REV.	DATE	BY	DESCRIPTION OF CHANGE

INCH [MM]	AMERICAN PROJECTION 	DRAWN	BY	DATE	REV-A-SHELF <sup>®</sup> , INC.		
			KRR	10-20-09	SIZE B	LAZY DAISY RH/LH 45° TIP OUT HINGE (RH SHOWN)	
TOLERANCES MAT. DEC. (WOOD) .XX ±.03 [.8mm] (OTHER) .XX ±.02 [.5mm] (ALL) .XXX ±.005 [.13 mm] FRACTIONS ±1/32 [.8 mm]			ANGLES ± 1/2°		MATERIAL	DRAWING NO. LD-HA-45	SCALE 1.000
			FINISH		PART NO. LD-HA-45	SHEET 1 OF 2	

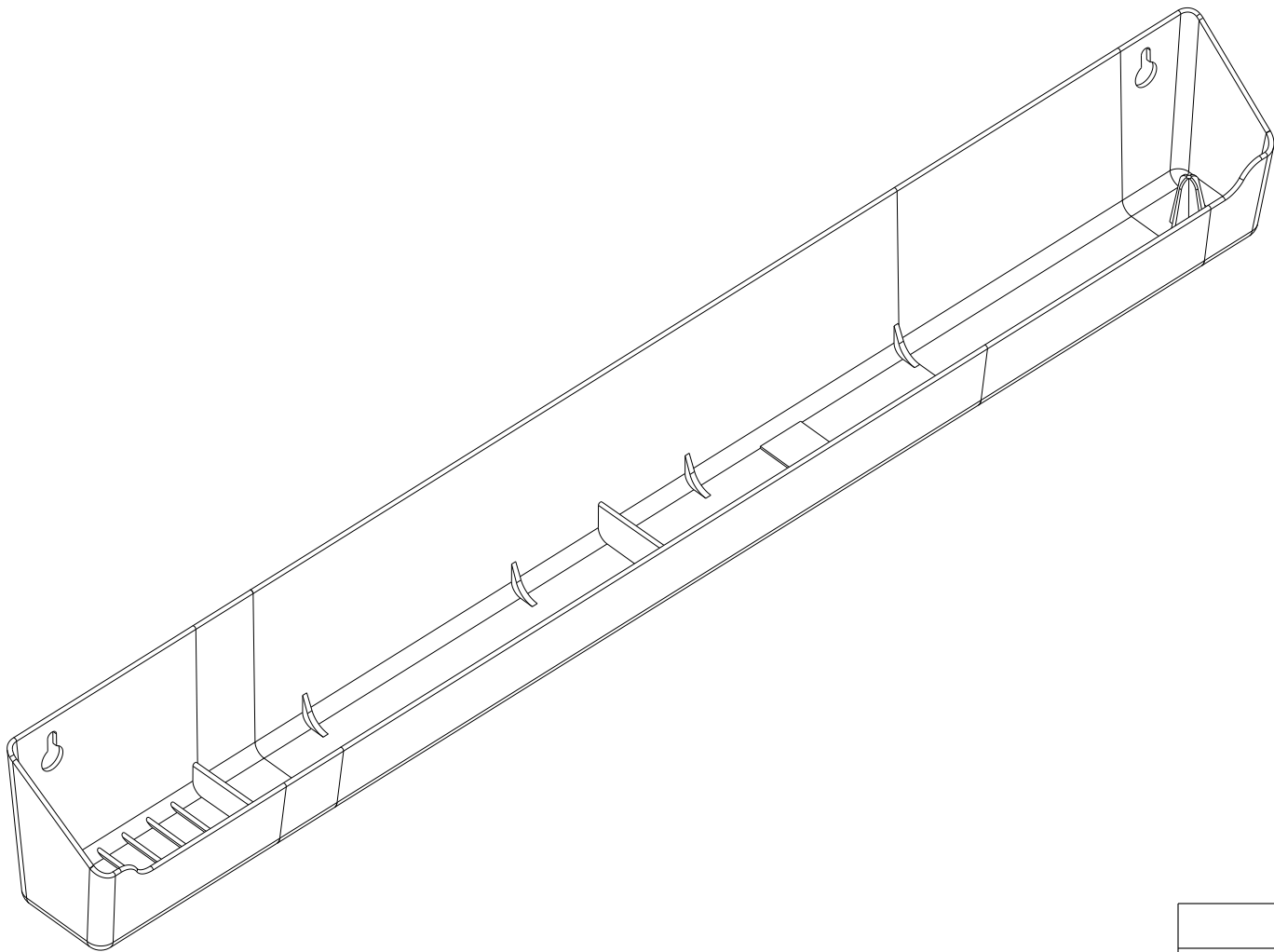


CUSTOMER DRAWING

This drawing is the property of Rev-A-Shelf (RAS) and is disclosed in confidence to the extent its subject matter is original to RAS. Any vendor receiving this drawing from RAS shall hold and use this drawing for the sole benefit of RAS and shall not disclose it to, or use or reproduce it for any third party, or perform any act adverse to the interest of RAS with respect to this drawing without the express written permission of RAS. Vendors shall not revise any physical, dimensional or performance characteristic unless authorized by Rev-A-Shelf Engineering.

REV.	DATE	BY	DESCRIPTION OF CHANGE

INCH [MM]	AMERICAN PROJECTION	DRAWN	BY	DATE	REV-A-SHELF®, INC.	
			LCS	7/21/22	SIZE	B
					24" DELUXE SINK FRONT TIP-OUT TRAY	
TOLERANCES		ANGLES ±1/2°	MATERIAL	DRAWING NO.	SCALE	
MAT. DEC.			FINISH	PART NO.	SHEET OF	
(WOOD) .XX ±.03 [.8mm]				LD-6591-24-**-10	LD-6591-24-**-10 0.375 1 2	
(OTHER) .XX ±.02 [.5mm]						
(ALL) .XXX ±.005 [.13 mm]						
FRACTIONS ±1/32 [.8 mm]						



PART DIMENSIONS	
WIDTH	24.31 [617,5]
DEPTH	2.09 [53]
HEIGHT *	3.29 [83,5]

\* HEIGHT W/ LD HINGES: 3.82 [97]

MIN CABINET OPENING **				
	FACE FRAME	FRAMELESS	INSET FACE FRAME	INSET FRAMELESS
WIDTH	26.50 [673]	26.50 [673]	26.50 [673]	26.50 [673]
DEPTH	2.38 [60,3]	2.38 [60,3]	3.13 [79,4]	3.13 [79,4]
HEIGHT	3.88 [98,4]	3.88 [98,4]	3.88 [98,4]	3.88 [98,4]

\*\* MCO BASED ON LD HINGES

HINGE SPECIFICATIONS				
HINGE MANUFACTURER	LAZY DAISY			
HINGE PART NUMBER	LD-HA-45	RELEASE PART NUMBER	N/A	
HINGE TYPE	PIVOT	HINGE EXTENSION	45°	MAX WEIGHT RATING
HINGE CLOSING	N/A	HINGE LENGTH	N/A	
HINGE MOUNTING	SIDE	HINGE FINISH	SILVER	N/A

CUSTOMER DRAWING

This drawing is the property of Rev-A-Shelf (RAS) and is disclosed in confidence to the extent its subject matter is original to RAS. Any vendor receiving this drawing from RAS shall hold and use this drawing for the sole benefit of RAS and shall not disclose it to, or use or reproduce it for any third party, or perform any act adverse to the interest of RAS with respect to this drawing without the express written permission of RAS. Vendors shall not revise any physical, dimensional or performance characteristic unless authorized by Rev-A-Shelf Engineering.

REV.	DATE	BY	DESCRIPTION OF CHANGE

INCH [MM]	AMERICAN PROJECTION 		BY	DATE	REV-A-SHELF®, INC.	
		DRAWN	LCS	7/21/22	SIZE B	24" DELUXE SINK FRONT TIP-OUT TRAY
TOLERANCES MAT. DEC. (WOOD) .XX ±.03 [.8mm] (OTHER) .XX ±.02 [.5mm] (ALL) .XXX ±.005 [.13 mm] FRACTIONS ±1/32 [.8 mm]		ANGLES ±1/2°	MATERIAL		DRAWING NO. LD-6591-24-**-10	SCALE 0.375
			FINISH		PART NO. LD-6591-24-**-10	SHEET 2 OF 2

TOLERANCES

MAT. DEC.  
(WOOD) .XX ±.03 [.8mm]  
(OTHER) .XX ±.02 [.5mm]  
(ALL) .XXX ±.005 [.13 mm]  
FRACTIONS ±1/32 [.8 mm]

ANGLES  
±1/2°