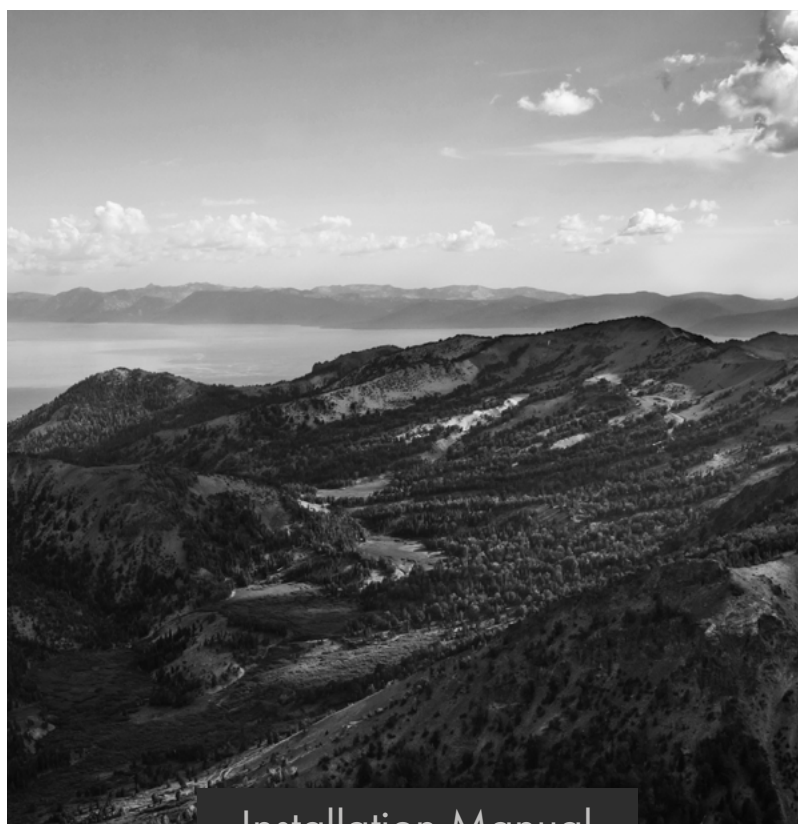


ZLINE

ATTAINABLE **LUXURY**®



Installation Manual

KITCHEN ACCESSORIES

www.zlinekitchen.com



ZLINE Kitchen and Bath provides Attainable Luxury, where the kitchen and bath of your dreams is never out of reach. Through our unique designs and unparalleled quality, we're dedicated to providing you an elevated experience in the heart of your home. With an endless selection of features and finishes, our inspiration is your reality.

ZLINE
ATTAINABLE LUXURY®



ZLINE is fueled by a passion for innovation; A relentless pursuit of bringing the highest end luxury designs and professional features into everyone's homes. Because we continually strive to improve our products, we may change specifications and designs without prior notice.


 **WARNING:** This product can expose you to chemicals including nickel, which is known to the State of California to cause cancer. For more information, go to www.P65Warnings.ca.gov.

TABLE OF CONTENTS

IMPORTANT SAFETY INSTRUCTIONS..... 1

 Prior to Installation 1

 Operating Conditions 1

 Tools Needed 1

 Installation Preparation 1

POT FILLER..... 2

DRINK FAUCET 5

SOAP DISPENSER..... 8

CARE AND MAINTENANCE..... 10

TROUBLESHOOTING..... 11

WARRANTY..... 12

IMPORTANT SAFETY INSTRUCTIONS

PRIOR TO INSTALLATION

- Make sure that the cold and hot water lines are turned off.
- Wrap all threaded connections with plumber's tape. Always wrap in a clockwise direction.
- Cover your drain to avoid losing parts during installation.
- Do not disassemble the main faucet body, as it has been installed and commissioned correctly and precisely before delivery to the factory.
- To prevent clogging of the faucet, flush the water lines prior to installation.

OPERATING CONDITIONS

- Working pressure: 7.25–120 psi / 0.05–0.83 MPa (including cold and hot water pressure)
- Water temperature:
 - Drink faucets: 39 °F–170 °F / 4 °C–77 °C.
 - Pot fillers: 39 °F–194 °F / 4 °C–90 °C.

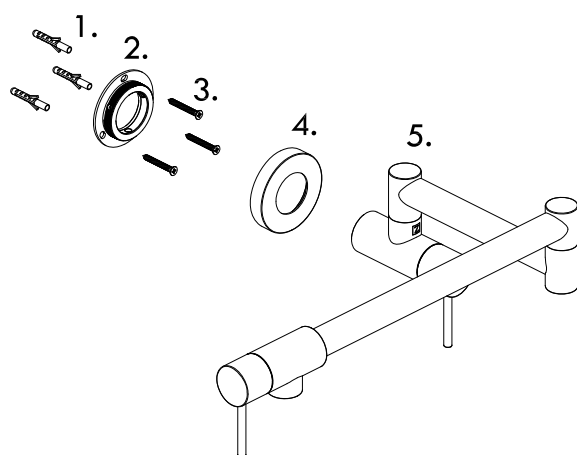
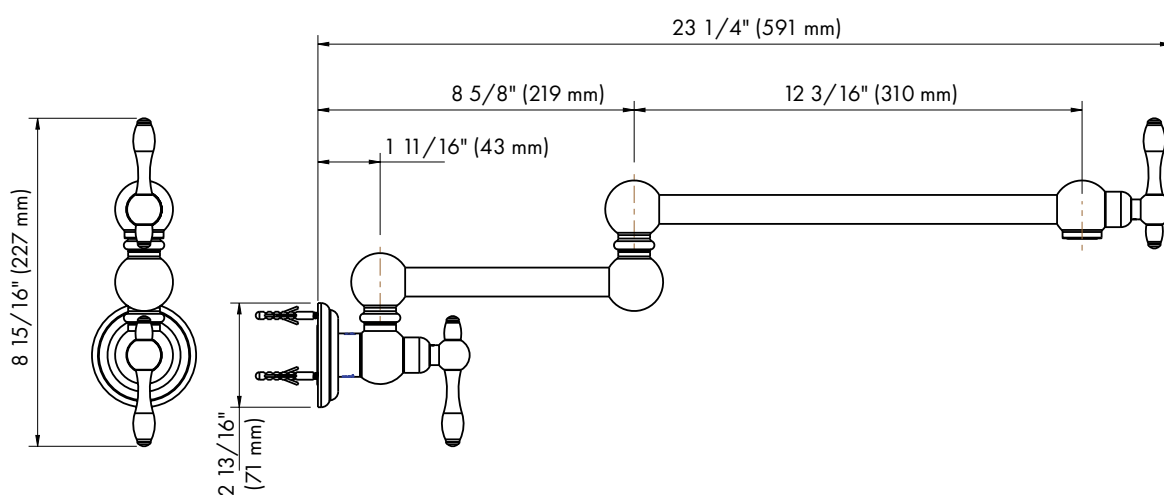
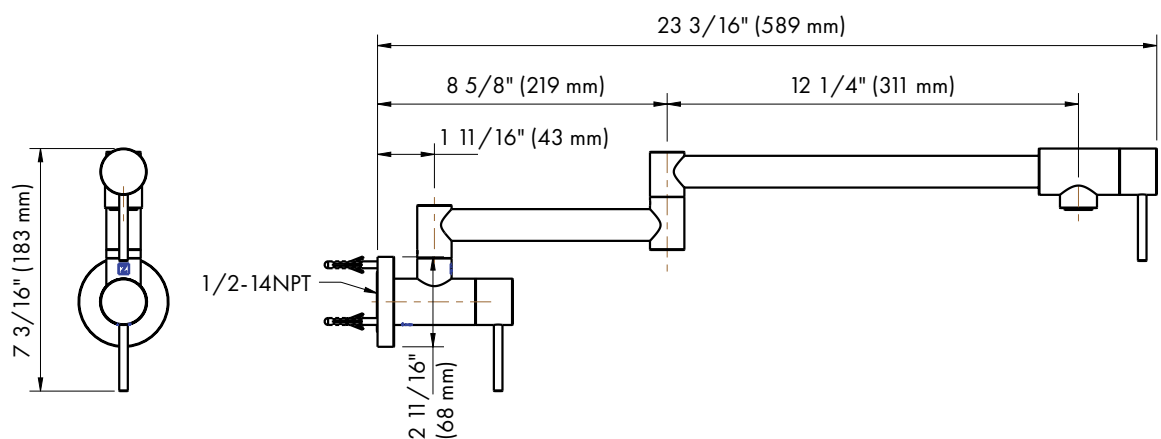
TOOLS NEEDED

- Drill
- Phillips-head screwdriver
- Pencil
- Wrench
- Bucket or suitable water container
- Use plumber's tape for a watertight seal on threaded pipe

INSTALLATION PREPARATION

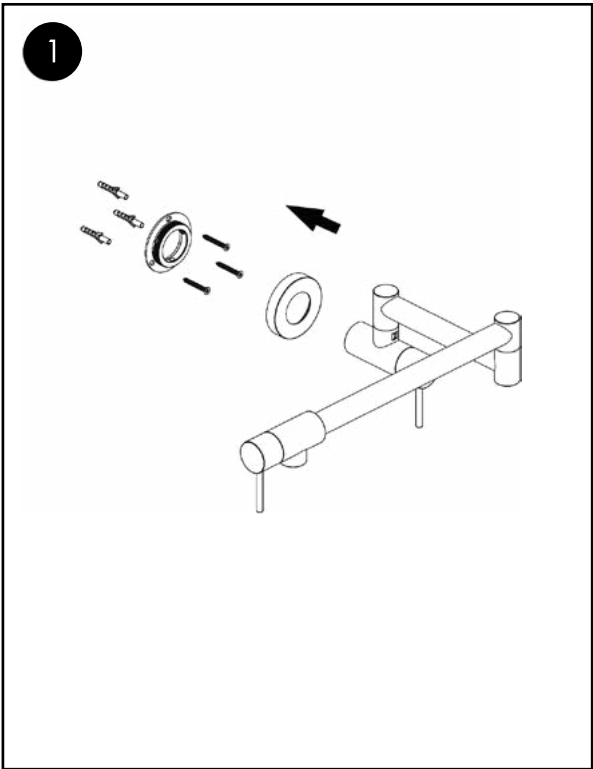
1. Shut off the water and let the water in the current faucet drain.
2. Assemble needed tools (above.)
3. Loosen the hardware that keeps the current faucet in place. Remove faucet.

POT FILLER

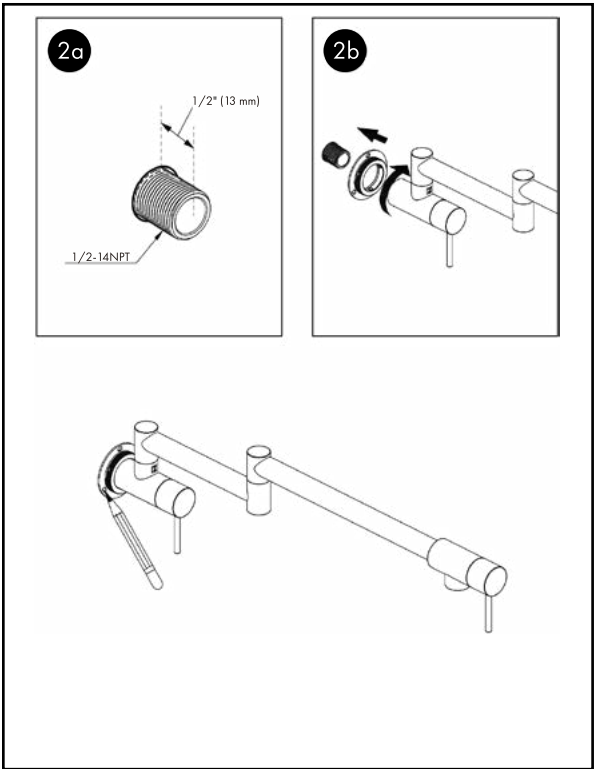


1. Wall anchor
2. Mounting plate
3. Screws
4. Flanges
5. Pot filler

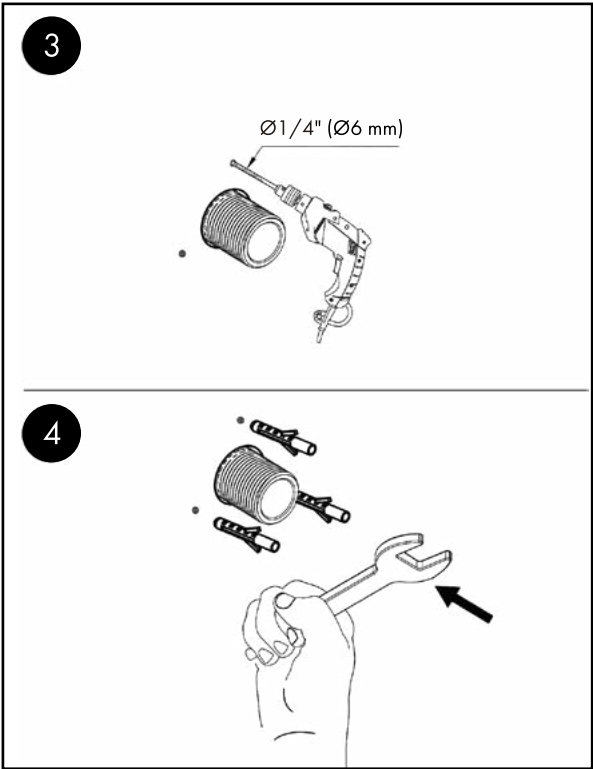
POT FILLER



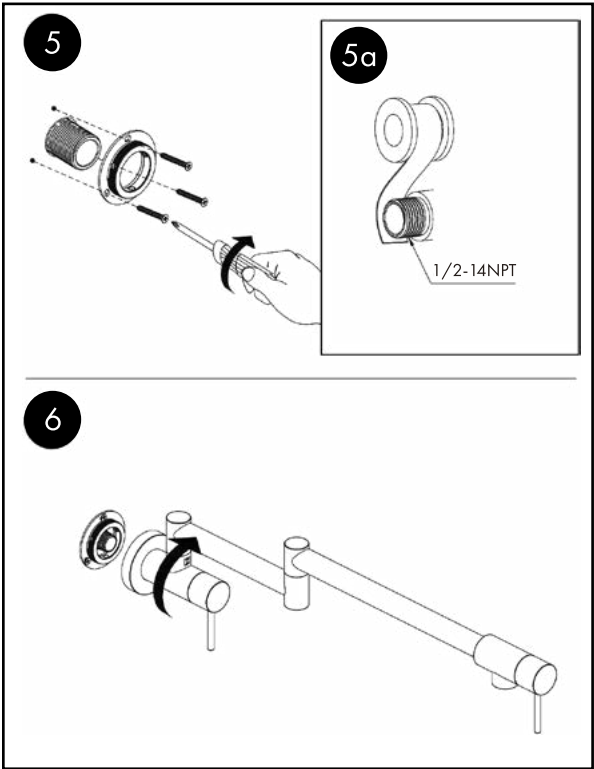
Align faucet parts with pipe to check for compatibility.



Note the position of the mounting bracket by marking the screw holes.

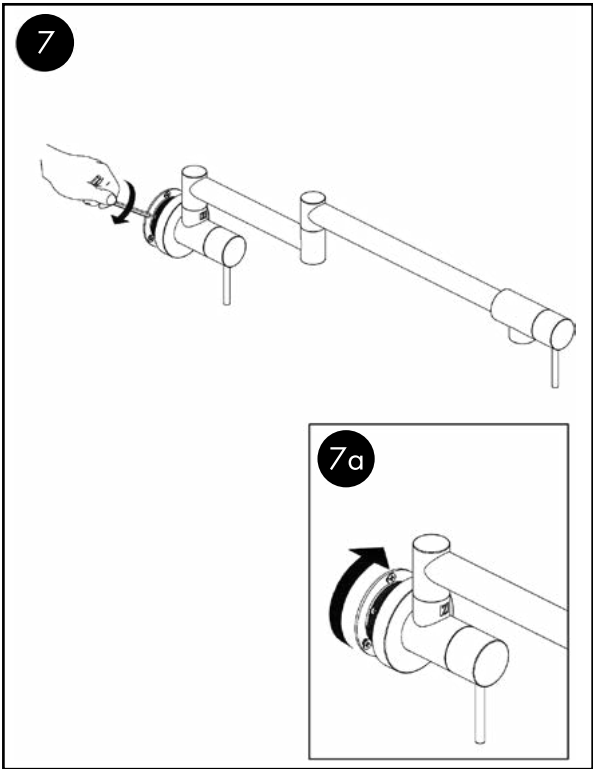


Drill in the wall anchors.

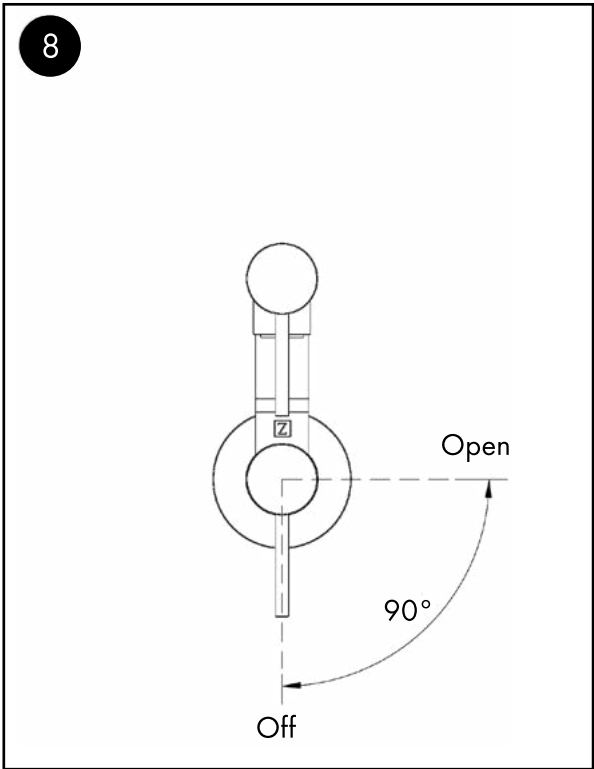


Screw the screws into place.

POT FILLER

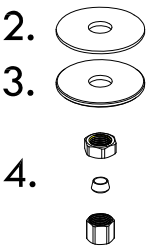
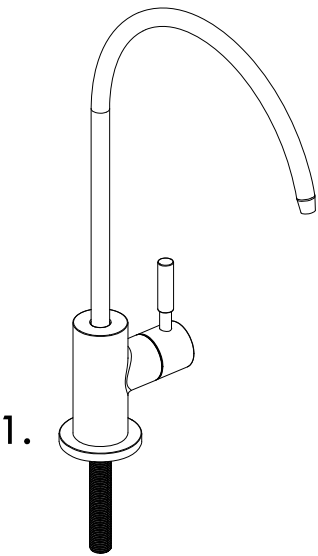


Secure the mounting plate with the included hex key.

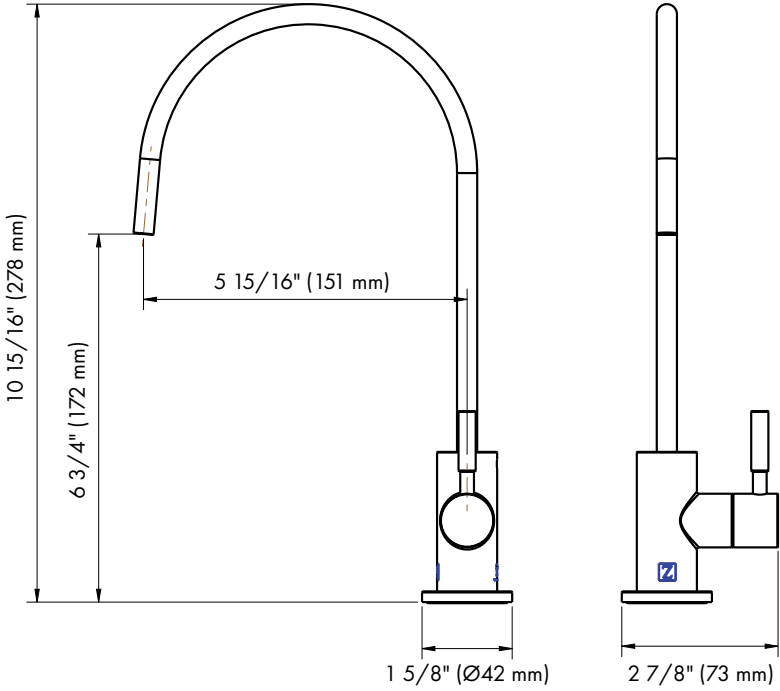


Review the diagram to understand the on and off settings.

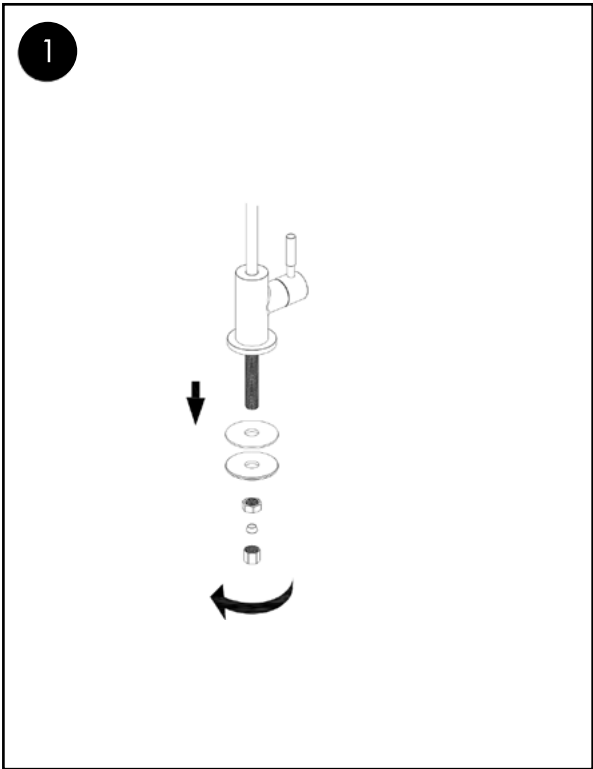
DRINK FAUCET



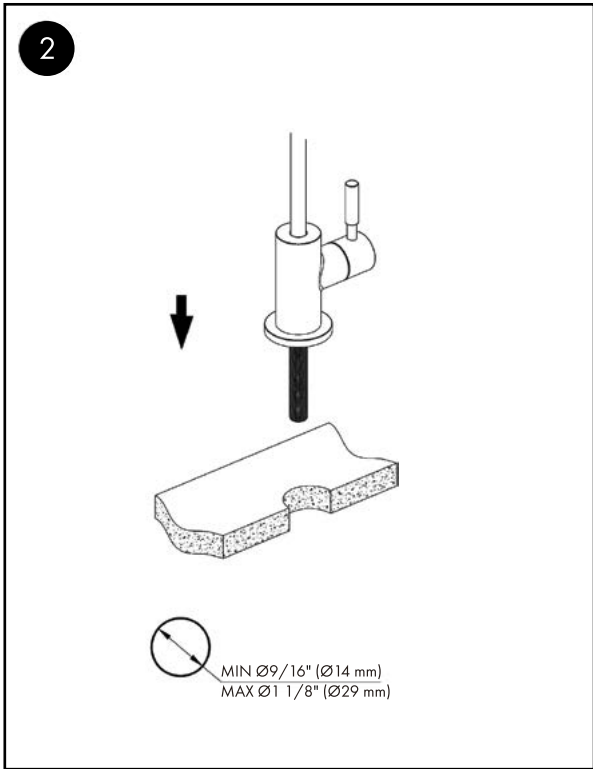
- 1. Faucet Body
- 2. Rubber Washer
- 3. Metal Washer
- 4. Fixing Nut



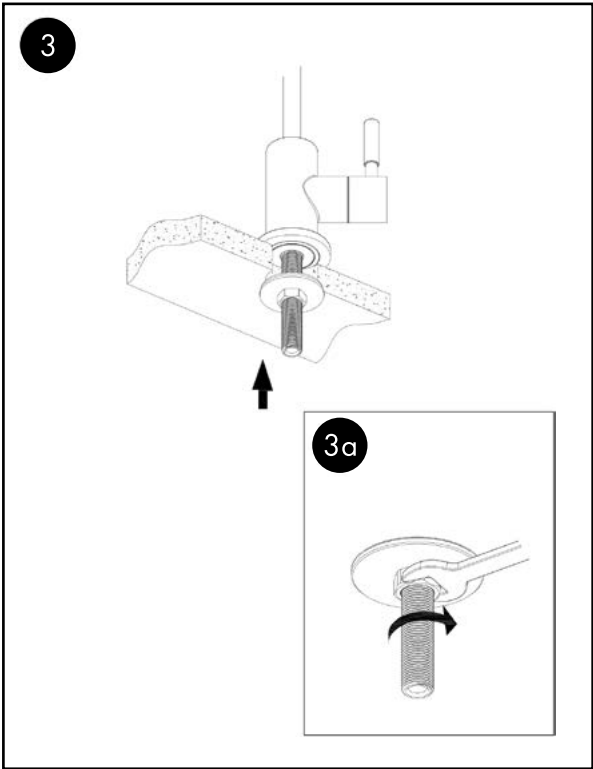
DRINK FAUCET



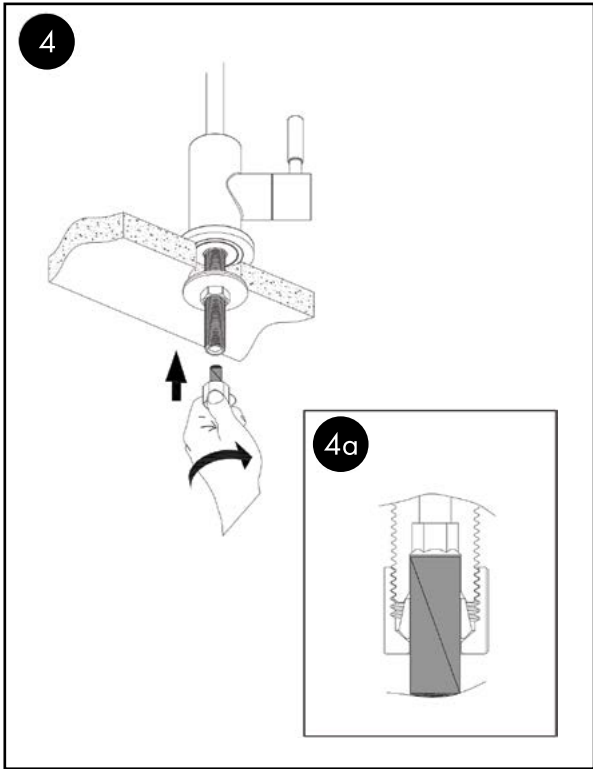
Loosen the fixing nut and washers and put aside.



Mount faucet to counter top.

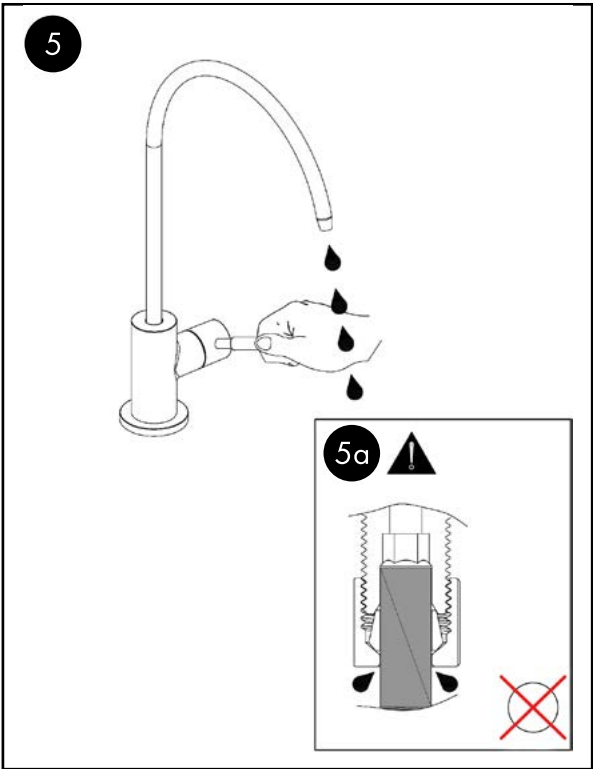


Secure the hardware into place with the nuts and screws.

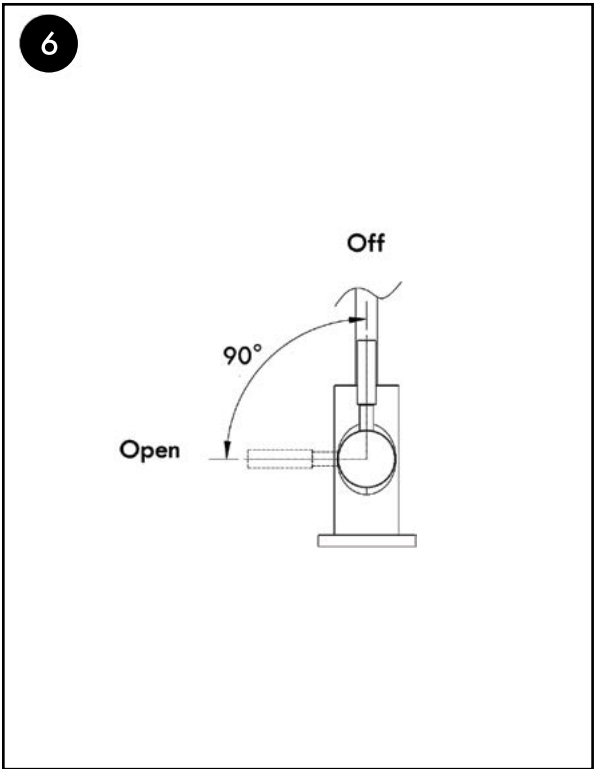


Secure the fixing nut into place.

DRINK FAUCET

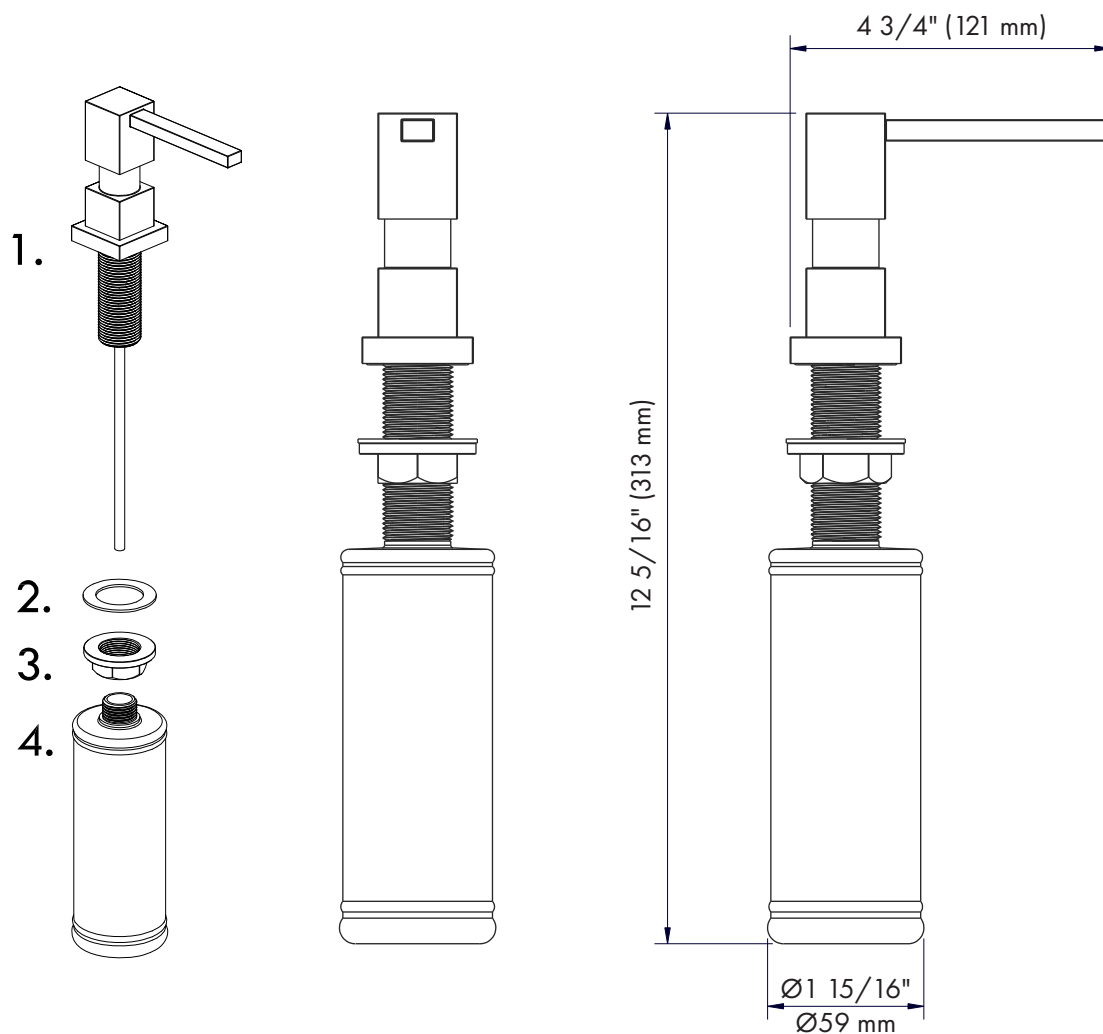


Test the faucet.



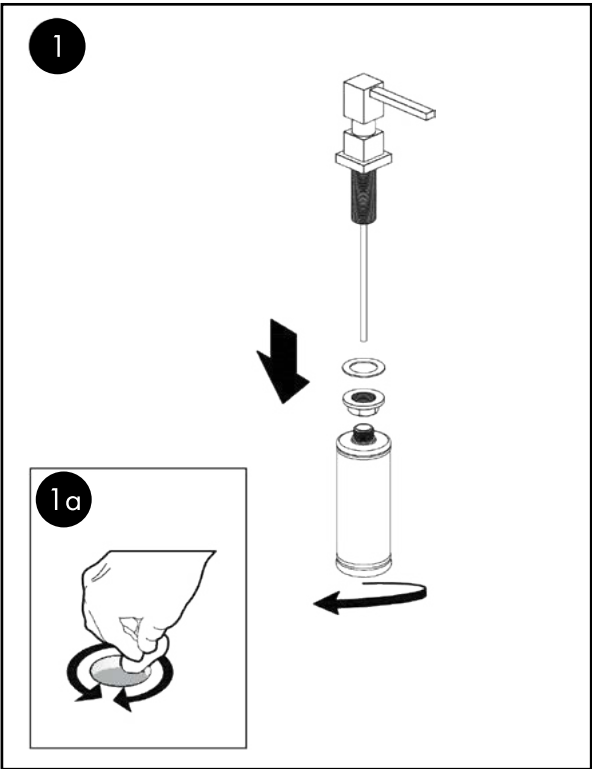
Review the diagram to understand the on and off settings.

SOAP DISPENSER

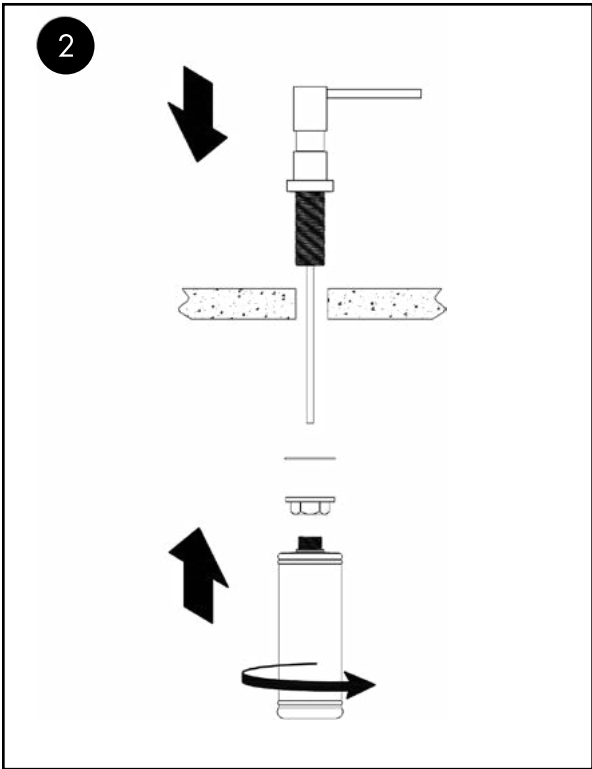


1. Soap Dispenser Head
2. Rubber Washer
3. Locknut
4. Plastic Bottle

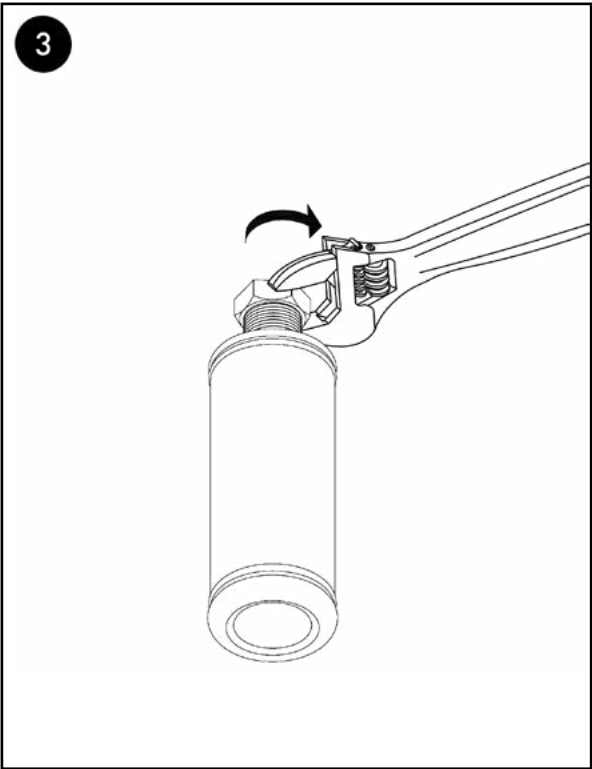
SOAP DISPENSER



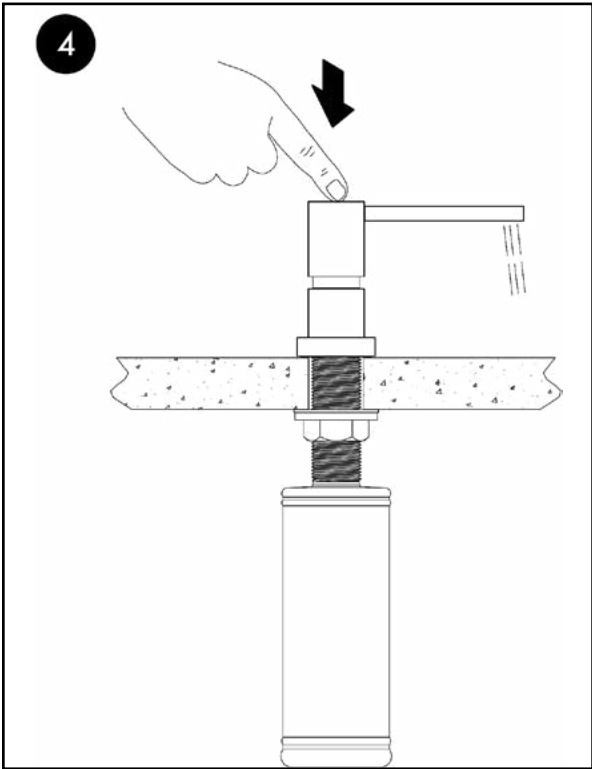
Loosen the locknut and washers and put aside.



Mount soap dispenser to counter top.



Secure the hardware into place.



Test the soap dispenser.

CARE AND MAINTENANCE

CARE AND MAINTENANCE

To keep products clean and shiny, follow the steps below:

1. Rinse clean with water and dry with a soft cloth.
 2. Do not clean with soaps, acid, polish, abrasives, or harsh cleaners.
 3. Do not use cloth with a coarse surface.
 4. Unscrew the aerator and clean when necessary.
- If soldering the water connections when installing a faucet, remove the O-rings, cartridges, and washers before applying any heat. Turn on the water and flush the fixture after soldering to remove any contaminants before reinstalling the O-rings, cartridges and washers.
 - Protect your eyes when cutting or soldering.
 - Do not over tighten screws/nuts. Finger tighten, then use a wrench/Phillips-head screwdriver to tighten the fixing screw/nut until snug.

TROUBLESHOOTING

PROBLEM	POSSIBLE CAUSE	SOLUTIONS
There is leakage under the handle.	The locking nut has come loose.	Unscrew the lever on the handle by hand. Loosen set screw with a hex wrench. Remove the handle and unscrew trim cap by hand. Tighten locking nut with an adjustable wrench.
Water will not shut off completely.	Cartridge may be defective.	Unscrew the level on the handle by hand. Loosen set screw with a hex wrench. Remove the handle and unscrew trim cap by hand. Unscrew the locking nut with an adjustable wrench. Remove ceramic disc cartridge. Check for cracks.
There is a leak between the spray head and the hose.	The spray head may be loose or the washer is not seated correctly in the hose connection.	Tighten the spray head by hand until snug. Make sure the washer is seated correctly.

WARRANTY

COVERAGE

ZLINE Kitchen and Bath faucets and kitchen accessories have a limited lifetime warranty from the original purchase date for the original purchaser of the product.

TERMS

This warranty applies only to the original purchaser of a faucet installed for normal residential use. This is defined as a single-family, residential dwelling in a non-commercial setting. Commercial settings include but are not limited to: schools, churches, hotels, restaurants, vacation rentals such as Airbnb, day care centers, private clubs, fire stations, common areas in multi-family dwellings, nursing homes, food service locations, and institutional food service locations such as hospitals or correction facilities. This warranty is non-transferable and will not be extended based on the date of installation. The warranty applies only to products installed in the continental United States and the District of Columbia.

Warranty shall not apply and ZLINE Kitchen and Bath is not responsible for damage resulting from negligence, improper maintenance, misuse, abuse, alteration of or tampering with the appliance, accident, natural disaster, improper installation, or installation not in accordance with the instructions contained in the manual, or the local codes.

WHAT IS NOT COVERED

1. Installation or start-up, damages, or problems caused by improper installation or use.
2. Installation in any commercial or non-residential application.
3. Removal or re-installation cost.
4. Aesthetic damage, scratches, or natural wear caused by normal use.
5. Second-hand, open box products or products purchased from an unauthorized retailer.

WARRANTY



SERVICE

For warranty service, please contact our Customer Service team at 1-614-777-5004 or visit www.zlinekitchen.com/contact to utilize our online Customer Experience Portal.



Scan the QR code to view the most up-to-date version of our Installation Manual and User Manual.



Need to purchase a part or accessory for your ZLINE product?
Visit www.zlineparts.com, ZLINE's official parts distribution partner.

2.0.1

1-614-777-5004

www.zlinekitchen.com

contact@zlinekitchen.com

ZLINE
ATTAINABLE LUXURY®