

# MINIMUM CABINET OPENING (MCO)

FRAMED VS. FRAMELESS

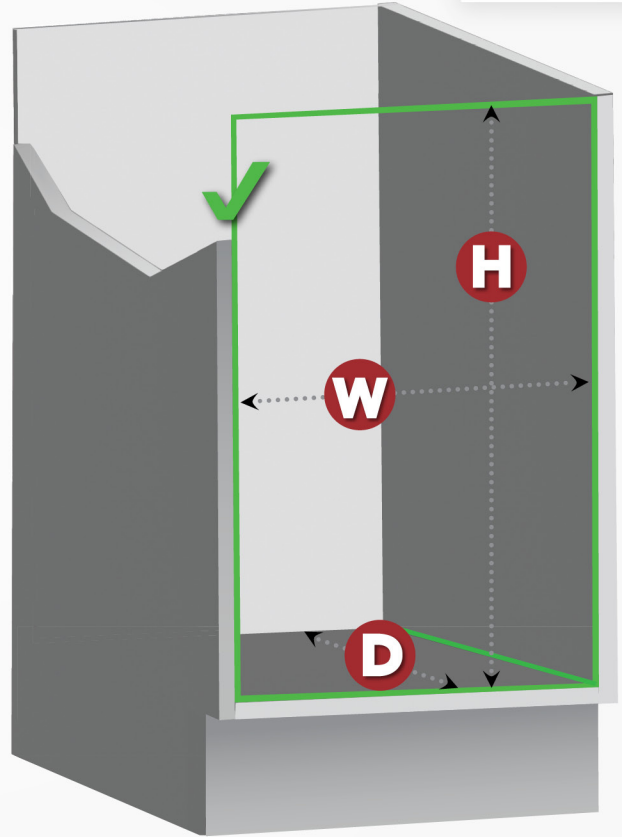
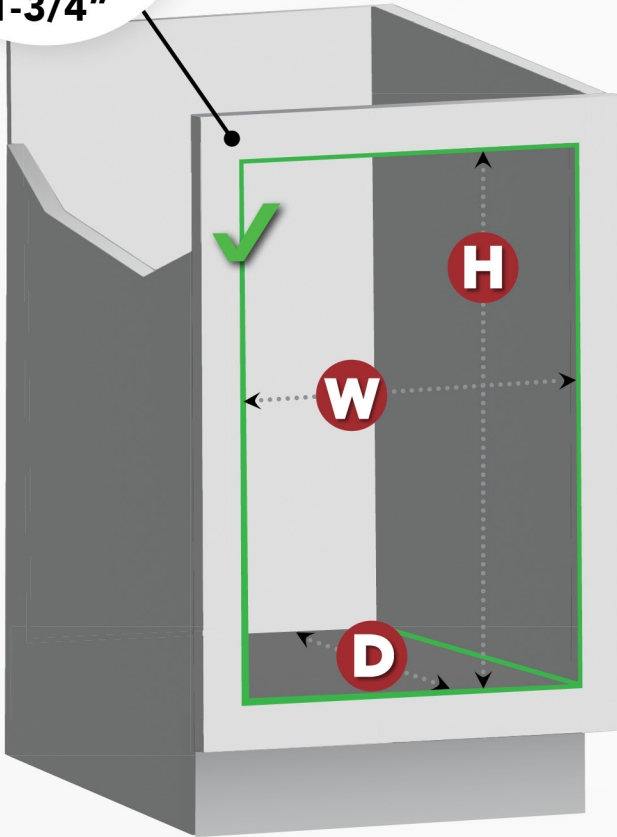
**COMMON  
FACE FRAME  
WIDTHS:**

- 1-1/2"
- 1-5/8"
- 1-3/4"



**PLEASE NOTE!** When measuring, check for obstructions such as door hinges or plumbing

- W** WIDTH
- D** DEPTH
- H** HEIGHT



## FRAMED

*Traditional style  
common in the USA*



## FRAMELESS

*(Full-Access)  
European inspired design*



# HOW TO MEASURE