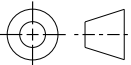
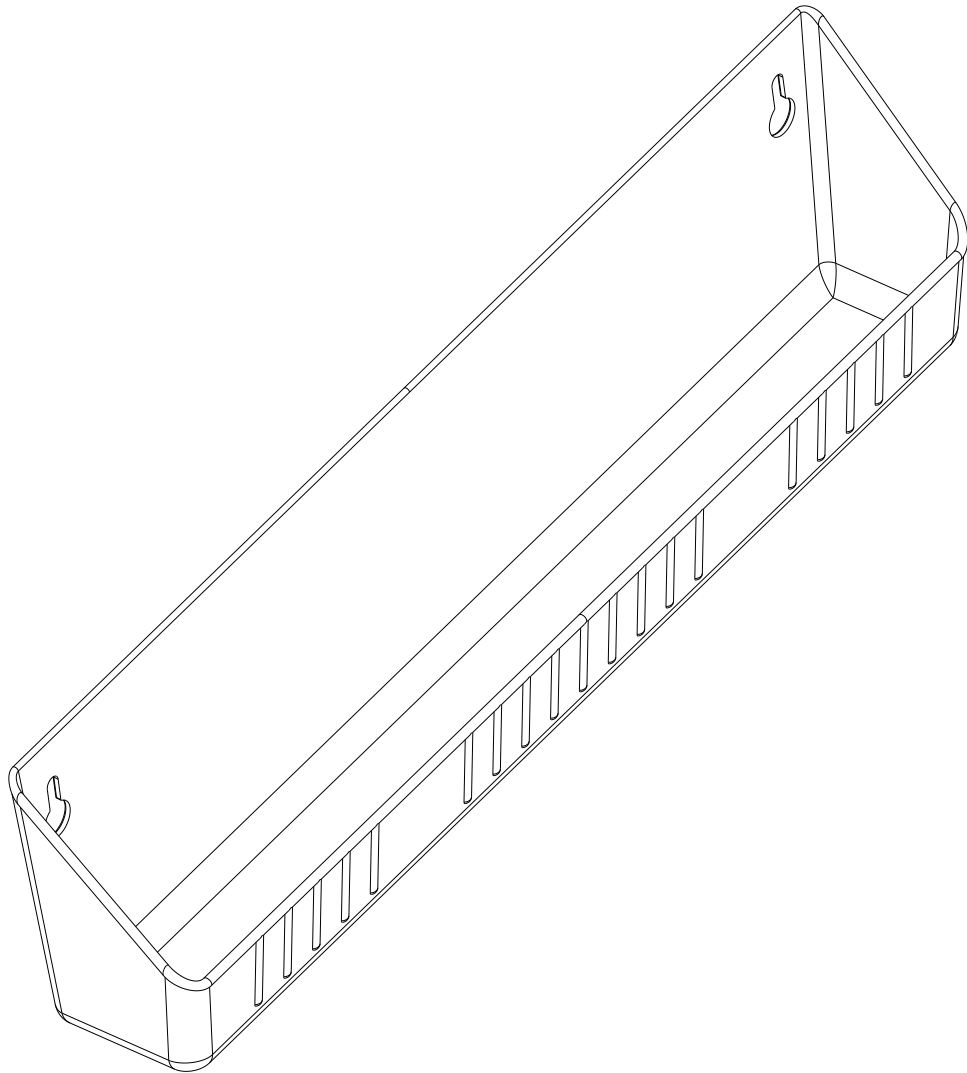


CUSTOMER DRAWING

This drawing is the property of Rev-A-Shelf (RAS) and is disclosed in confidence to the extent its subject matter is original to RAS. Any vendor receiving this drawing from RAS shall hold and use this drawing for the sole benefit of RAS and shall not disclose it to, or use or reproduce it for any third party, or perform any act adverse to the interest of RAS with respect to this drawing without the express written permission of RAS. Vendors shall not revise any physical, dimensional or performance characteristic unless authorized by Rev-A-Shelf Engineering.

REV.	DATE	BY	DESCRIPTION OF CHANGE

INCH [MM]	AMERICAN PROJECTION 		BY	DATE	REV-A-SHELF [®] , INC.	
		DRAWN	LCS	7/07/22	SIZE B	14" POLYMER TIP-OUT STANDARD TRAY
TOLERANCES		ANGLES ±1/2°	MATERIAL		DRAWING NO.	SCALE
MAT. DEC.			FINISH		6581-14-XX-4	0.500
(WOOD) .XX ±.03 [.8mm]					PART NO.	SHEET OF
(OTHER) .XX ±.02 [.5mm]						
(ALL) .XXX ±.005 [.13 mm]						
FRACTIONS ±1/32 [.8 mm]						



PART DIMENSIONS	
WIDTH	14.00 [355,6]
DEPTH	2.12 [54]
HEIGHT *	3.75 [95,2]

* HEIGHT W/ SELF-HOLDIN HINGES: 3.80 [96,5]

MIN CABINET OPENING **				
	FACE FRAME	FRAMELESS	INSET FACE FRAME	INSET FRAMELESS
WIDTH	16.25 [413]	16.25 [413]	16.25 [413]	16.25 [413]
DEPTH	2.38 [60,3]	2.38 [60,3]	3.13 [79,4]	3.13 [79,4]
HEIGHT	3.88 [98,4]	3.88 [98,4]	3.88 [98,4]	3.88 [98,4]

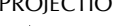
** MCO BASED ON SELF-HOLDIN HINGES

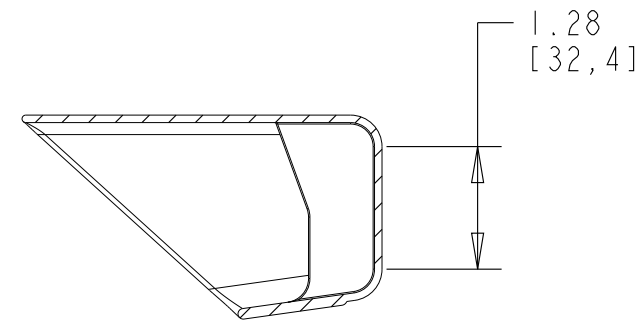
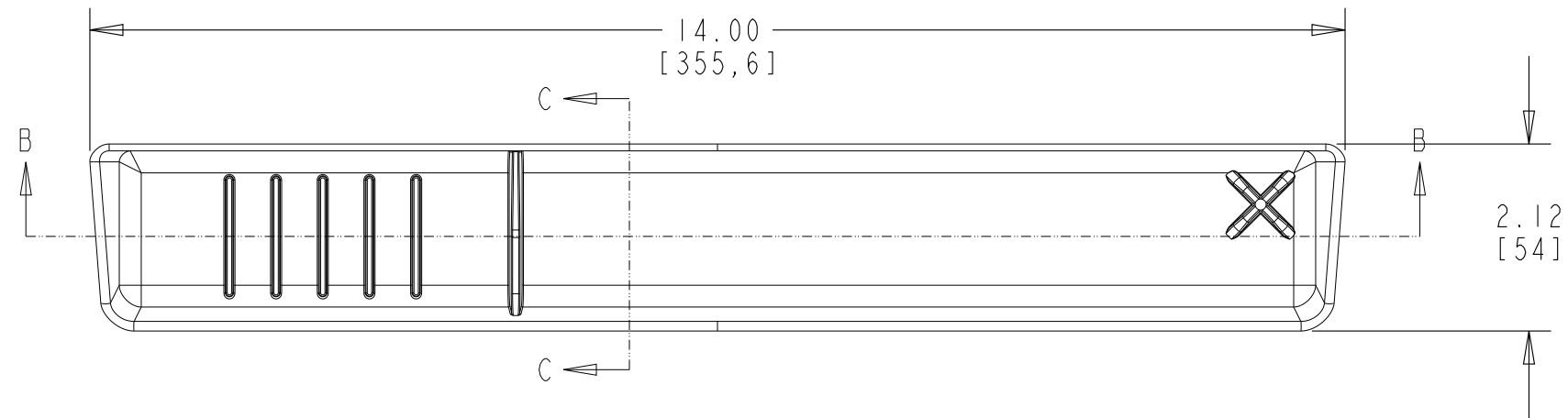
HINGE SPECIFICATIONS				
HINGE PART NUMBER	HA 94-MZ	RELEASE PART NUMBER	N/A	MAX WEIGHT RATING
HINGE TYPE	PIVOT	HINGE EXTENSION	45°	
HINGE CLOSING	N/A	HINGE LENGTH	N/A	
HINGE MOUNTING	SIDE	HINGE FINISH	ZINC	N/A

CUSTOMER DRAWING

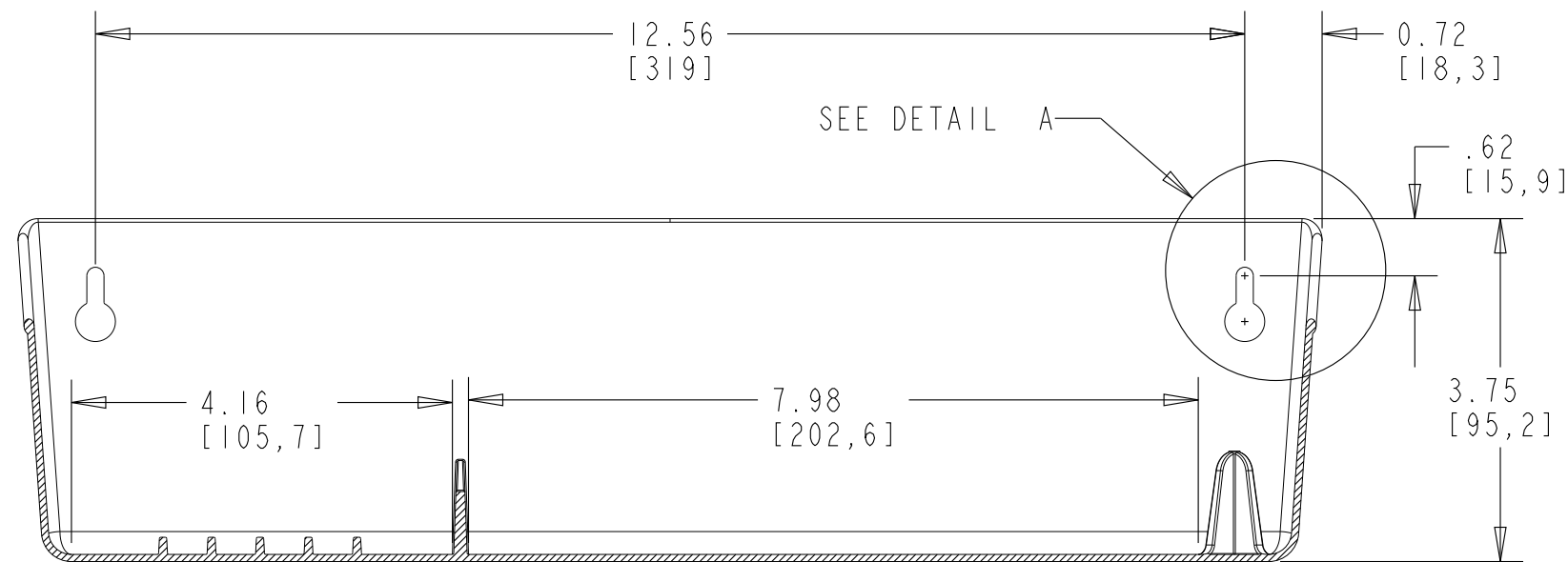
This drawing is the property of Rev-A-Shelf (RAS) and is disclosed in confidence to the extent its subject matter is original to RAS. Any vendor receiving this drawing from RAS shall hold and use this drawing for the sole benefit of RAS and shall not disclose it to, or use or reproduce it for any third party, or perform any act adverse to the interest of RAS with respect to this drawing without the express written permission of RAS. Vendors shall not revise any physical, dimensional or performance characteristic unless authorized by Rev-A-Shelf Engineering.

REV.	DATE	BY	DESCRIPTION OF CHANGE

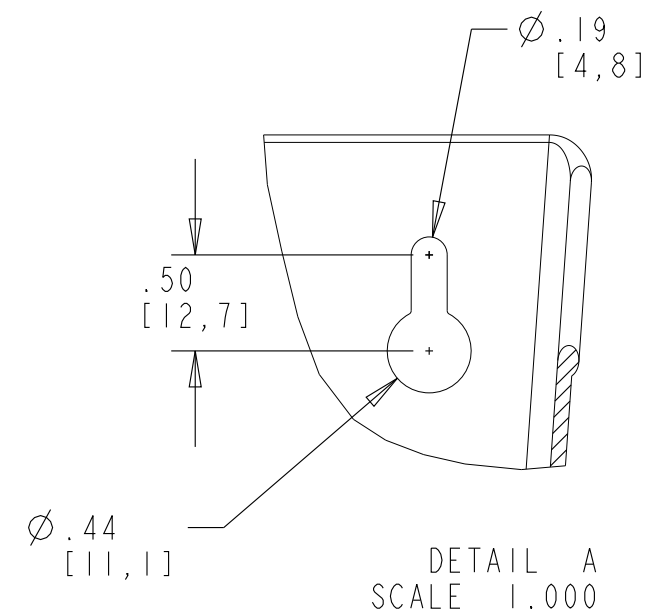
INCH [MM]	AMERICAN PROJECTION 	DRAWN	BY	DATE	REV-A-SHELF®, INC.	
			LCS	7/07/22	SIZE B	14" POLYMER TIP-OUT STANDARD TRAY
<div>TOLERANCES MAT. DEC. (WOOD) .XX ±.03 [.8mm] (OTHER) .XX ±.02 [.5mm] (ALL) .XXX ±.005 [.13 mm] FRACTIONS ±1/32 [.8 mm]</div>		ANGLES ±1/2°	MATERIAL		DRAWING NO. 6581-14-XX-4	SCALE 0.500
			FINISH		PART NO. 6581-14-XX-4	SHEET 2 OF 2



SECTION C-C



SECTION B-B



DETAIL A
SCALE 1.000

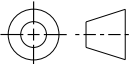
NOTE: DIMENSION TOLERANCE $\pm .06$ "

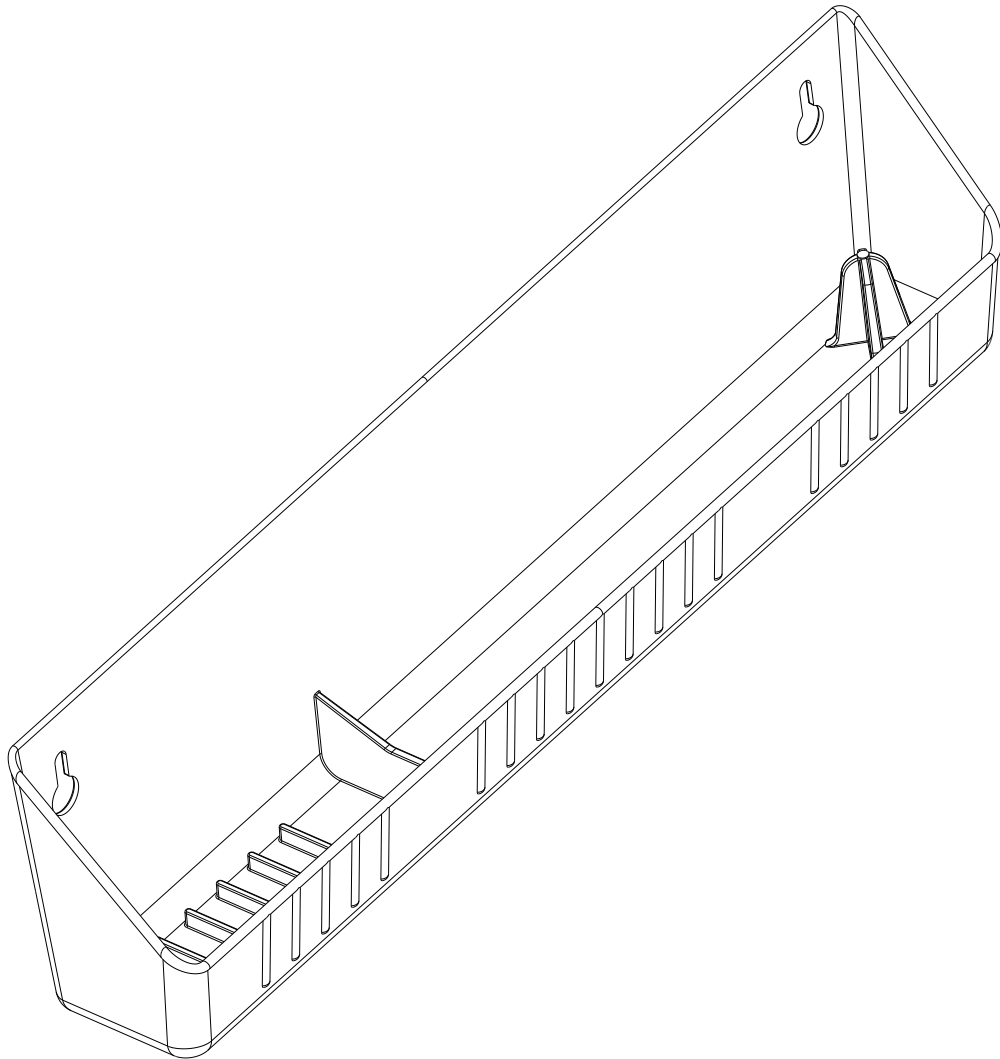
PART NUMBER	COLOR
6591-14-11-4	WHITE
6591-14-15-4	ALMOND

CUSTOMER DRAWING

This drawing is the property of Rev-A-Shelf (RAS) and is disclosed in confidence to the extent its subject matter is original to RAS. Any vendor receiving this drawing from RAS shall hold and use this drawing for the sole benefit of RAS and shall not disclose it to, or use or reproduce it for any third party, or perform any act adverse to the interest of RAS with respect to this drawing without the express written permission of RAS. Vendors shall not revise any physical, dimensional or performance characteristic unless authorized by Rev-A-Shelf Engineering.

REV.	DATE	BY	DESCRIPTION OF CHANGE

INCH [MM]	AMERICAN PROJECTION 		BY	DATE	REV-A-SHELF®, INC.		
		DRAWN	KRR	1-20-14	SIZE	14" POLYMER TIP-OUT ACCESSORY TRAY	
				B			
	TOLERANCES			MATERIAL			DRAWING NO.
	MAT. DEC. (WOOD) .XX ±.03 [.8mm] (OTHER) .XX ±.02 [.5mm] (ALL) .XXX ±.005 [.13 mm] FRACTIONS ±1/32 [.8 mm]			FINISH		6591-14-XX-4_CUST	0.500
ANGLES ±1/2°					PART NO.	SHEET OF	
					SEE CHART	1 2	



PART NUMBER	COLOR
6591-14-11-4	WHITE
6591-14-15-4	ALMOND

PART DIMENSIONS	
WIDTH	14.00 [355,6]
DEPTH	2.12 [54]
HEIGHT *	3.75 [95,2]

* HEIGHT W/ SELF-HOLDIN HINGES: 3.80 [96,5]

MIN CABINET OPENING **				
	FACE FRAME	FRAMELESS	INSET FACE FRAME	INSET FRAMELESS
WIDTH	16.25 [413]	16.25 [413]	16.25 [413]	16.25 [413]
DEPTH	2.38 [60,3]	2.38 [60,3]	3.13 [79,4]	3.13 [79,4]
HEIGHT	3.88 [98,4]	3.88 [98,4]	3.88 [98,4]	3.88 [98,4]


** MCO BASED ON SELF-HOLDIN HINGES

HINGE SPECIFICATIONS				
HINGE PART NUMBER	HA 94-MZ	RELEASE PART NUMBER	N/A	MAX WEIGHT RATING
HINGE TYPE	PIVOT	HINGE EXTENSION	45°	
HINGE CLOSING	N/A	HINGE LENGTH	N/A	
HINGE MOUNTING	SIDE	HINGE FINISH	ZINC	N/A

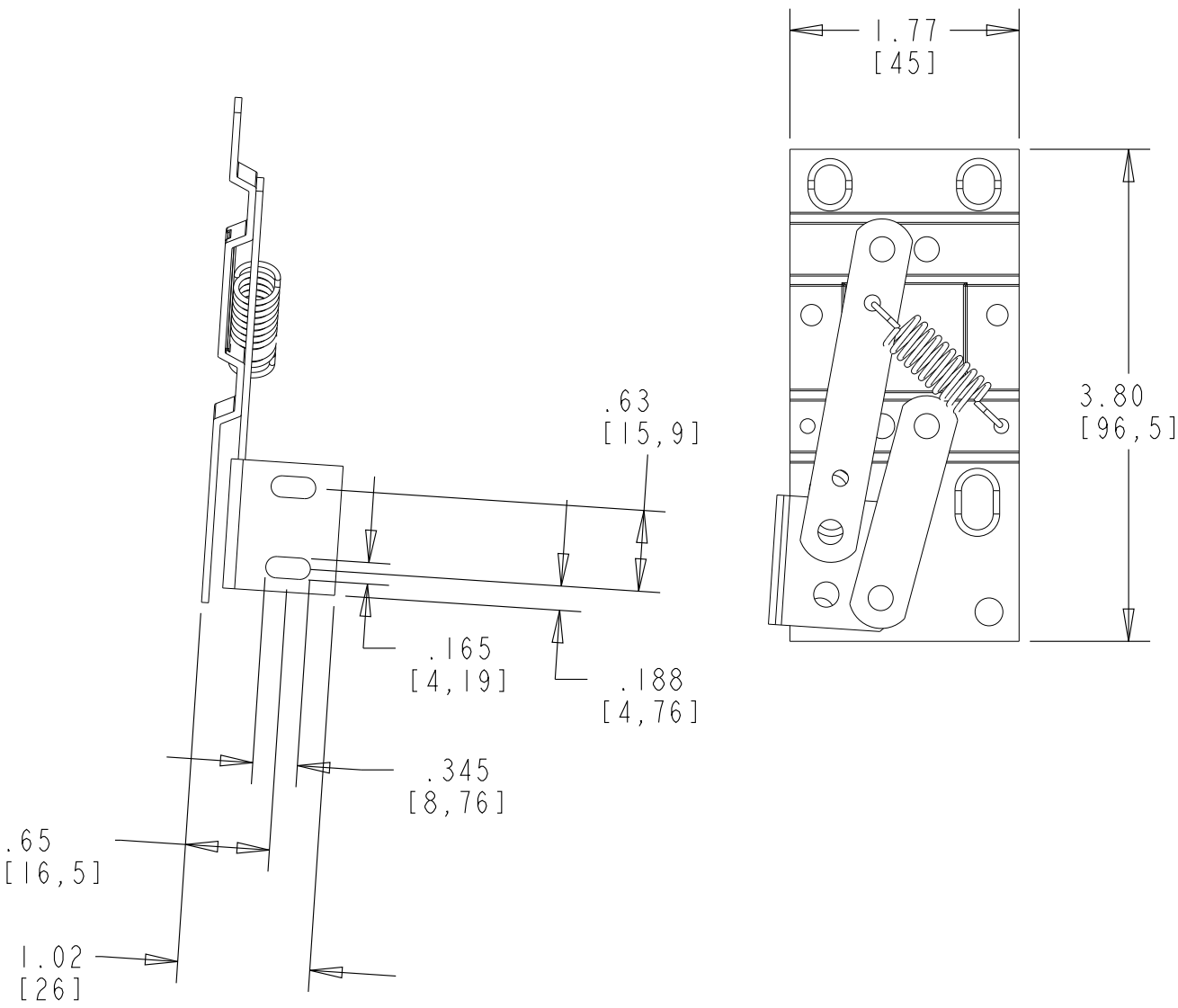
CUSTOMER DRAWING

This drawing is the property of Rev-A-Shelf (RAS) and is disclosed in confidence to the extent its subject matter is original to RAS. Any vendor receiving this drawing from RAS shall hold and use this drawing for the sole benefit of RAS and shall not disclose it to, or use or reproduce it for any third party, or perform any act adverse to the interest of RAS with respect to this drawing without the express written permission of RAS. Vendors shall not revise any physical, dimensional or performance characteristic unless authorized by Rev-A-Shelf Engineering.

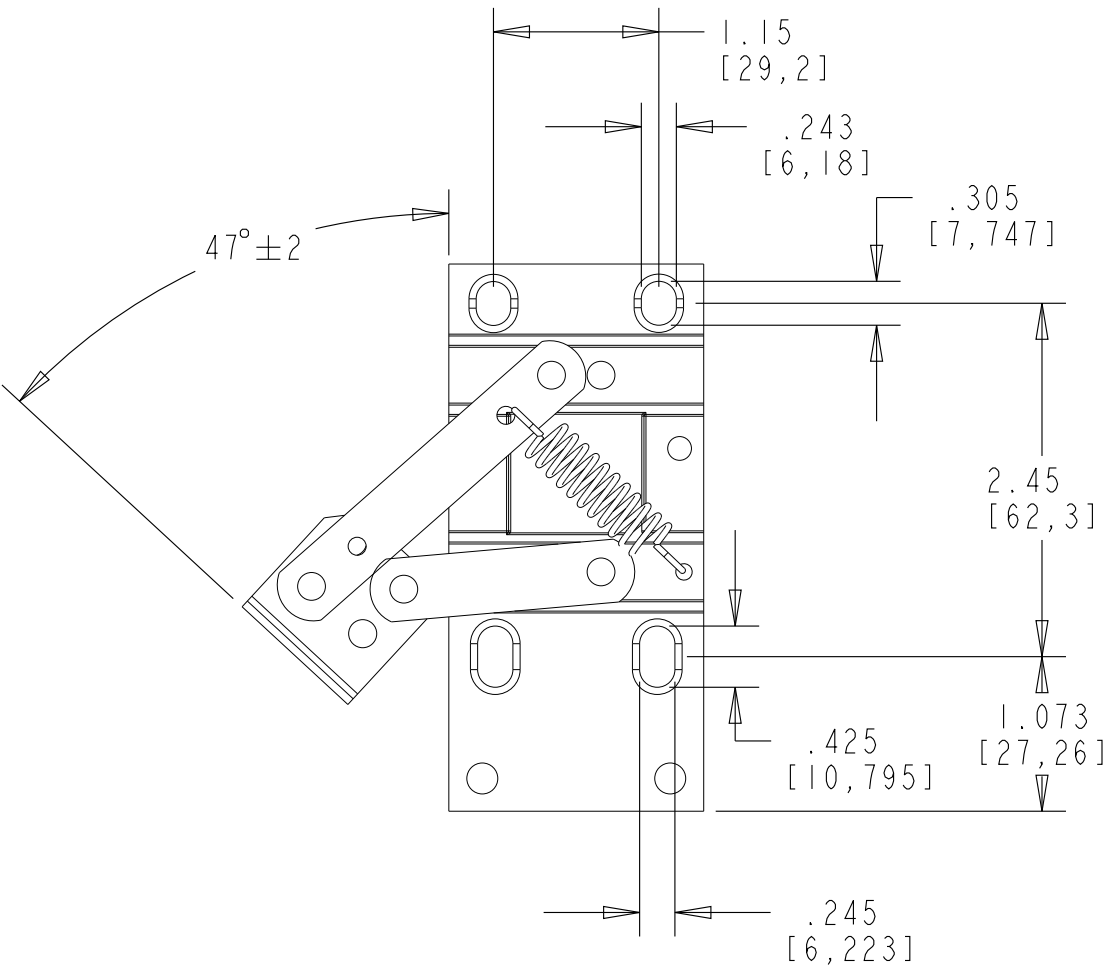
REV.	DATE	BY	DESCRIPTION OF CHANGE

INCH [MM]	AMERICAN PROJECTION 		BY	DATE	REV-A-SHELF®, INC.	
		DRAWN	KRR	1-20-14	SIZE	14" POLYMER TIP-OUT ACCESSORY TRAY
					B	
TOLERANCES MAT. DEC. (WOOD) .XX ±.03 [.8mm] (OTHER) .XX ±.02 [.5mm] (ALL) .XXX ±.005 [.13 mm] FRACTIONS ±1/32 [.8 mm]		ANGLES ±1/2°	MATERIAL		DRAWING NO. 6591-14-XX-4_CUST	SCALE 0.500
			FINISH		PART NO. SEE CHART	SHEET 2 OF 2

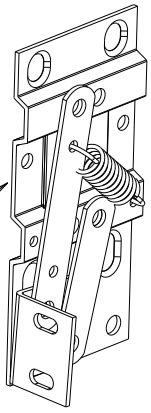
CLOSED



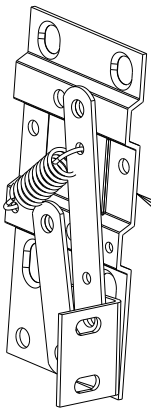
OPEN



LEFT HINGE



RIGHT HINGE

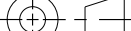


SCALE 0.500

CUSTOMER DRAWING

This drawing is the property of Rev-A-Shelf (RAS) and is disclosed in confidence to the extent its subject matter is original to RAS. Any vendor receiving this drawing from RAS shall hold and use this drawing for the sole benefit of RAS and shall not disclose it to, or use or reproduce it for any third party, or perform any act adverse to the interest of RAS with respect to this drawing without the express written permission of RAS. Vendors shall not revise any physical, dimensional or performance characteristic unless authorized by Rev-A-Shelf Engineering.

REV.	DATE	BY	DESCRIPTION OF CHANGE

INCH [MM]	AMERICAN PROJECTION 	DRAWN	BY	DATE	REV-A-SHELF®, INC.			
			KMW	6-08-10	SIZE B	SELF-HOLDIN TIP OUT HINGE		
TOLERANCES		ANGLES ±1/2°	MATERIAL		DRAWING NO. HA-94 / 95		SCALE 0.750	
MAT. DEC.			FINISH		PART NO. HA-94 / 95		SHEET OF 1	
(WOOD) .XX ±.03 [.8mm]								
(OTHER) .XX ±.02 [.5mm]								
(ALL) .XXX ±.005 [.13 mm]								
FRACTIONS ±1/32 [.8 mm]								