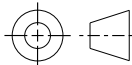
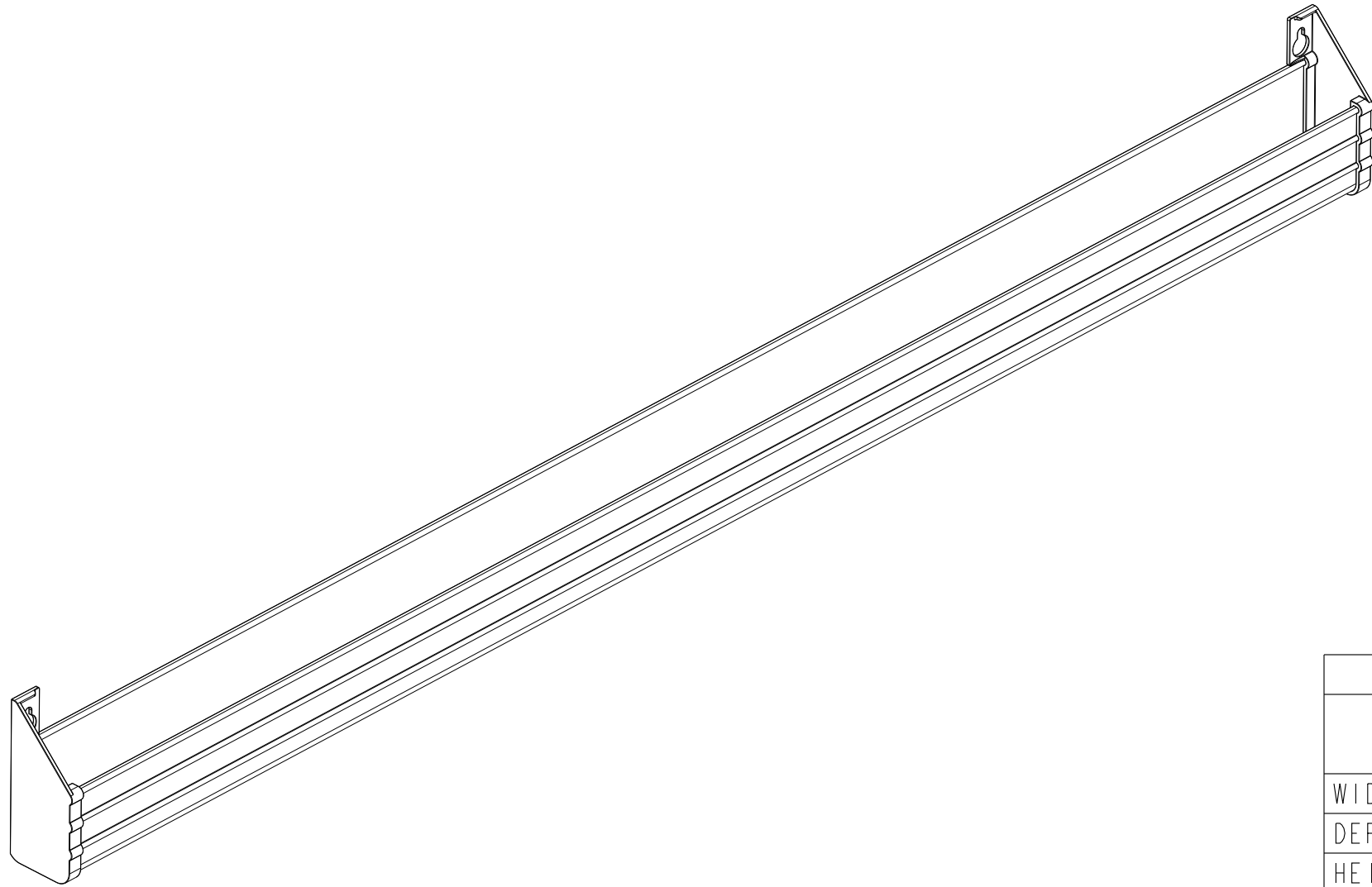


CUSTOMER DRAWING

This drawing is the property of Rev-A-Shelf (RAS) and is disclosed in confidence to the extent its subject matter is original to RAS. Any vendor receiving this drawing from RAS shall hold and use this drawing for the sole benefit of RAS and shall not disclose it to, or use or reproduce it for any third party, or perform any act adverse to the interest of RAS with respect to this drawing without the express written permission of RAS. Vendors shall not revise any physical, dimensional or performance characteristic unless authorized by Rev-A-Shelf Engineering.

REV.	DATE	BY	DESCRIPTION OF CHANGE

INCH [MM]	AMERICAN PROJECTION 		BY	DATE	REV-A-SHELF®, INC.	
		DRAWN	LCS	7/19/22	SIZE B	SLIM SERIES 36" TIP-OUT TRAY W/ ENDCAPS
<div>TOLERANCES MAT. DEC. (WOOD) .XX ±.03 [.8mm] (OTHER) .XX ±.02 [.5mm] (ALL) .XXX ±.005 [.13 mm] FRACTIONS ±1/32 [.8 mm]</div> <div>ANGLES ±1/2°</div>			MATERIAL		DRAWING NO. 6541-36-**-5*	SCALE 0.325
			FINISH		PART NO. 6541-36-**-5*	SHEET 1 OF 2



NOTE ON PART NO.:

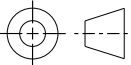
6541-36-**-50: 1 PR. HINGES AND END CAPS

6541-36-**-52: 2 PR. HINGES AND END CAPS

↑
11 FOR WHITE; 15 FOR ALMOND

This drawing is the property of Rev-A-Shelf (RAS) and is disclosed in confidence to the extent its subject matter is original to RAS. Any vendor receiving this drawing from RAS shall hold and use this drawing for the sole benefit of RAS and shall not disclose it to, or use or reproduce it for any third party, or perform any act adverse to the interest of RAS with respect to this drawing without the express written permission of RAS. Vendors shall not revise any physical, dimensional or performance characteristic unless authorized by Rev-A-Shelf Engineering.

REV.	DATE	BY	DESCRIPTION OF CHANGE

INCH [MM]	AMERICAN PROJECTION 		BY	DATE	REV-A-SHELF®, INC.	
		DRAWN	LCS	7/19/22	SIZE B	SLIM SERIES 36" TIP-OUT TRAY W/ ENDCAPS
<i>TOLERANCES</i> MAT. DEC. (WOOD) .XX ±.03 [.8mm] (OTHER) .XX ±.02 [.5mm] (ALL) .XXX ±.005 [.13 mm] FRACTIONS ±1/32 [.8 mm]		ANGLES ±1/2°	MATERIAL		DRAWING NO. 6541-36-**-5*	SCALE 0.325
			FINISH		PART NO. 6541-36-**-5*	SHEET 2 OF 2

PART DIMENSIONS	
WIDTH	36.00 [914,4]
DEPTH *	1.66 [42,2]
HEIGHT **	3.64 [92,3]

* DEPTH W/ SELF-HOLDIN HINGES: 1.77 [45]

** HEIGHT W/ SELF-HOLDIN HINGES: 3.80 [96,5]

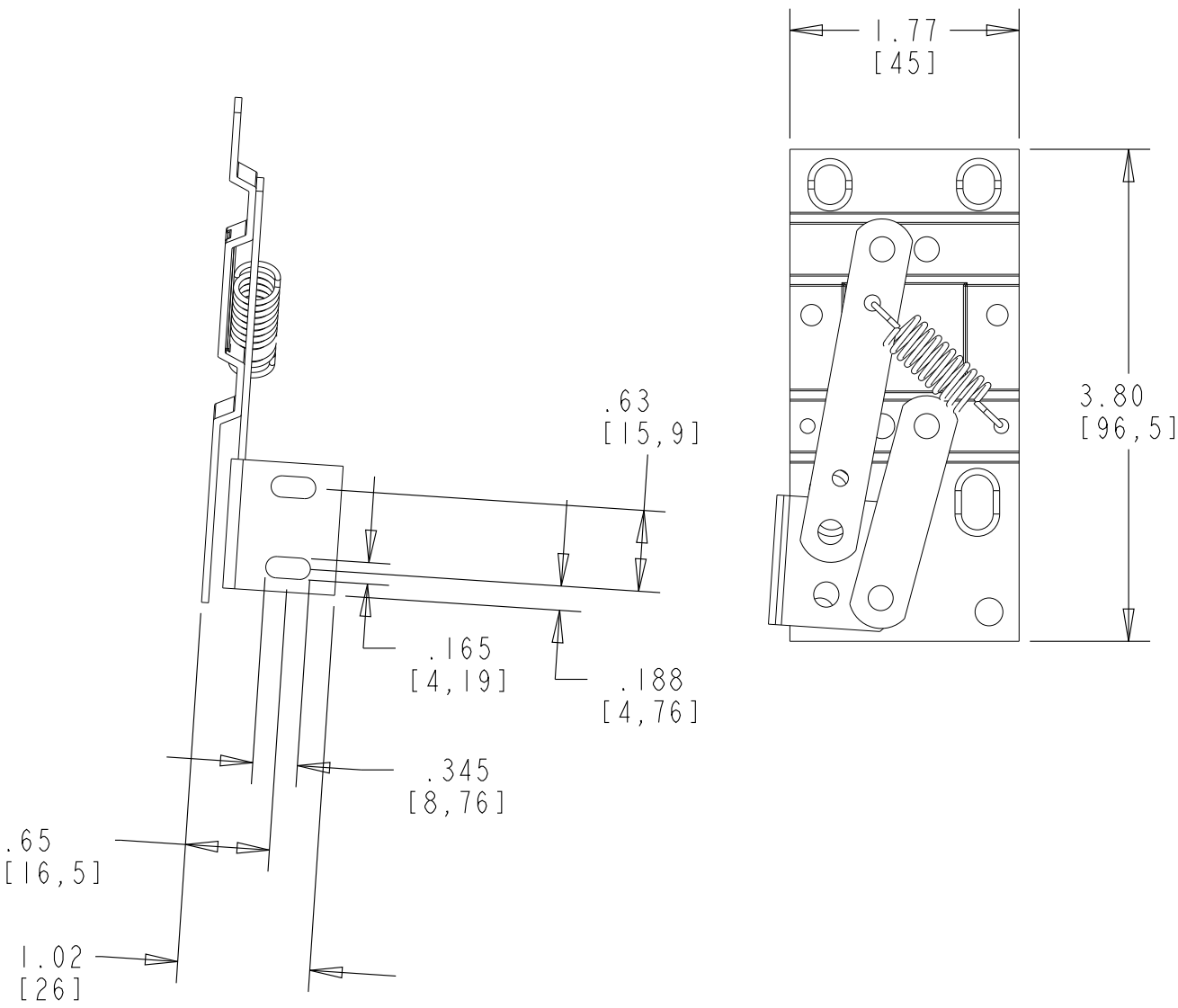
MIN CABINET OPENING ***				
	FACE FRAME	FRAMELESS	INSET FACE FRAME	INSET FRAMELESS
WIDTH	N/A	N/A	N/A	N/A
DEPTH	1.90 [48,3]	1.90 [48,3]	2.65 [67,3]	2.65 [67,3]
HEIGHT	4.13 [105]	4.13 [105]	4.13 [105]	4.13 [105]

*** MCO BASED ON SELF-HOLDIN HINGES

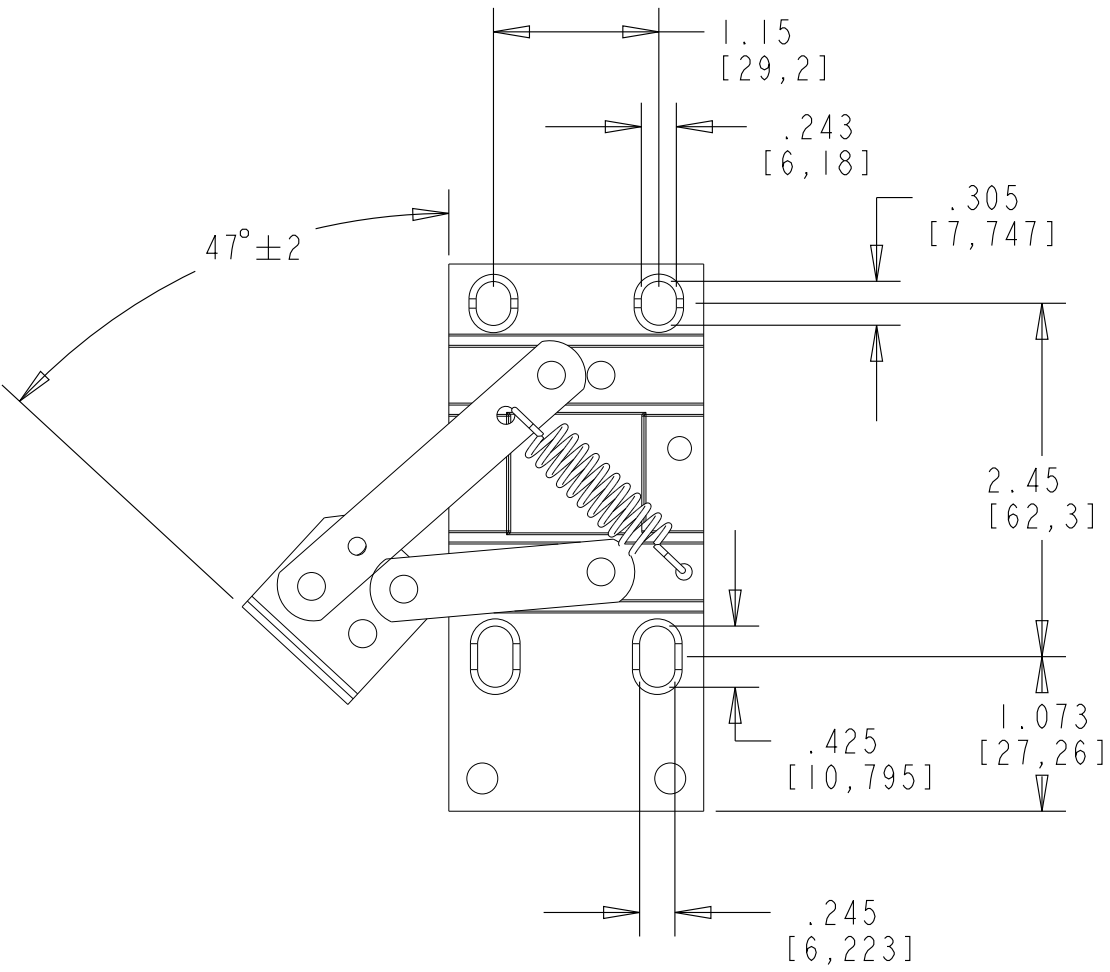
HINGE SPECIFICATIONS				
HINGE PART NUMBER	HA 95-MZ	RELEASE PART NUMBER	N/A	MAX WEIGHT RATING
HINGE TYPE	PIVOT	HINGE EXTENSION	45°	
HINGE CLOSING	N/A	HINGE LENGTH	N/A	
HINGE MOUNTING	SIDE	HINGE FINISH	SILVER	N/A

CUSTOMER DRAWING

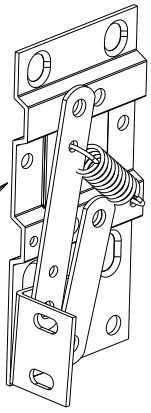
CLOSED



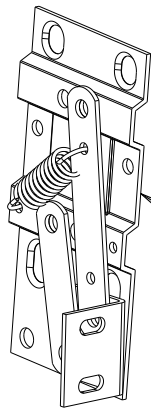
OPEN



LEFT HINGE



RIGHT HINGE

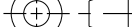


SCALE 0.500

CUSTOMER DRAWING

This drawing is the property of Rev-A-Shelf (RAS) and is disclosed in confidence to the extent its subject matter is original to RAS. Any vendor receiving this drawing from RAS shall hold and use this drawing for the sole benefit of RAS and shall not disclose it to, or use or reproduce it for any third party, or perform any act adverse to the interest of RAS with respect to this drawing without the express written permission of RAS. Vendors shall not revise any physical, dimensional or performance characteristic unless authorized by Rev-A-Shelf Engineering.

REV.	DATE	BY	DESCRIPTION OF CHANGE

INCH [MM]	AMERICAN PROJECTION	DRAWN	BY KMW	DATE 6-08-10	REV-A-SHELF,® INC.		
					SIZE B	SELF-HOLDIN TIP OUT HINGE	
		TOLERANCES				DRAWING NO.	
MAT. DEC.		ANGLES ±1/2"	MATERIAL		HA-94 / 95		SCALE 0.750
(WOOD) .XX ±.03 [.8mm]			FINISH		PART NO.		SHEET OF
(OTHER) .XX ±.02 [.5mm]					HA-94 / 95		
(ALL) .XXX ±.005 [.13 mm]							
FRACTIONS ±1/32 [.8 mm]							