
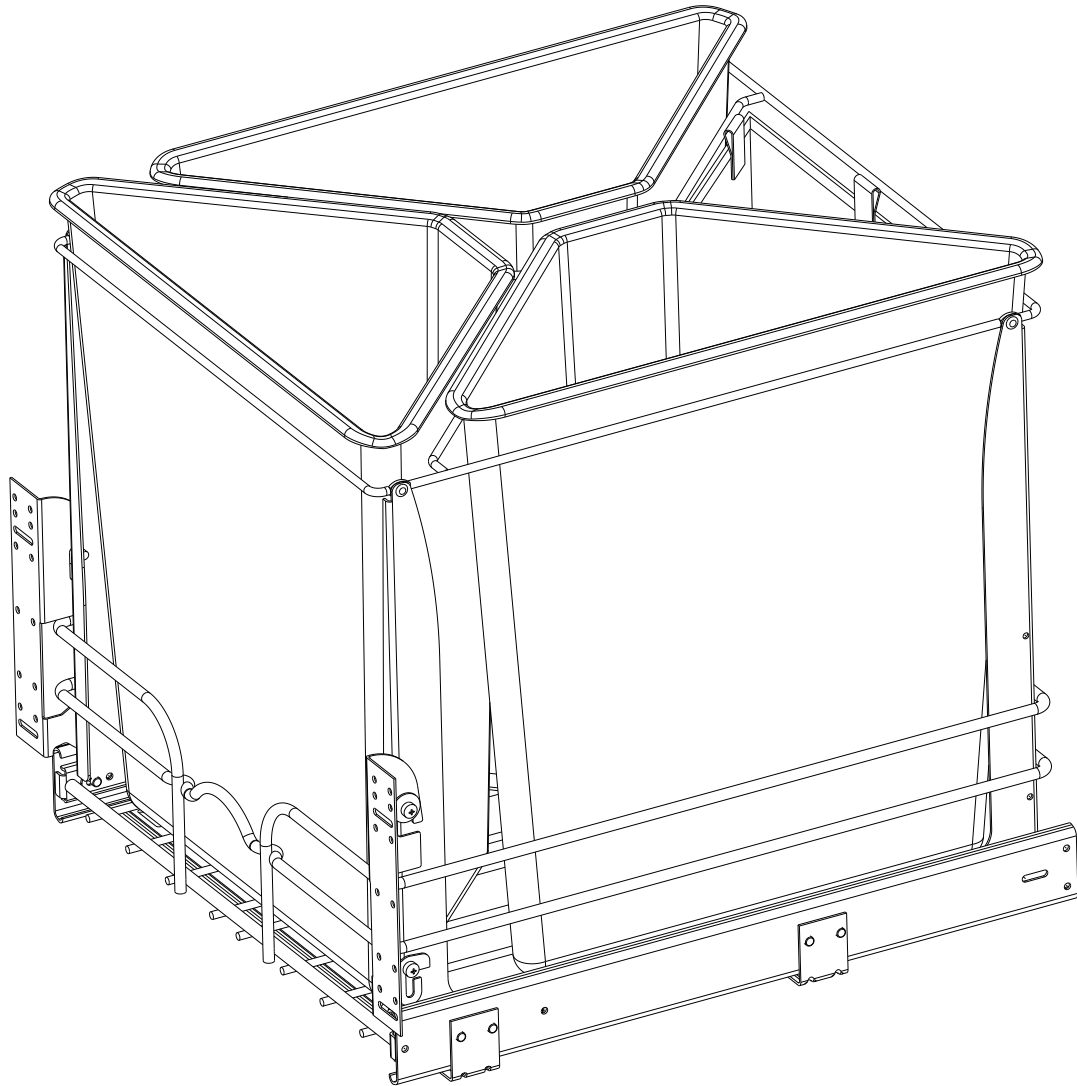


This drawing is the property of Rev-A-Shelf (RAS) and is disclosed in confidence to the extent its subject matter is original to RAS. Any vendor receiving this drawing from RAS shall hold and use this drawing for the sole benefit of RAS and shall not disclose it to, or use or reproduce it for any third party, or perform any act adverse to the interest of RAS with respect to this drawing without the express written permission of RAS. Vendors shall not revise any physical, dimensional or performance characteristic unless authorized by Rev-A-Shelf Engineering.

REV.	DATE	BY	DESCRIPTION OF CHANGE

INCH [MM]	AMERICAN PROJECTION 		BY	DATE	REV-A-SHELF [®] , INC.		
		DRAWN	LCS	6/09/22	SIZE B	TRIPLE 250T RECYCLE CENTER	
TOLERANCES		ANGLES ±1/2°	MATERIAL		DRAWING NO. 5BBSC-WMDM24-X		SCALE 0.150
MAT. DEC.			FINISH		PART NO. 5BBSC-WMDM24-X		SHEET 1 OF 2
(WOOD) .XX ±.03 [.8mm]							
(OTHER) .XX ±.02 [.5mm]							
(ALL) .XXX ±.005 [.13 mm]							
FRACTIONS ±1/32 [.8 mm]							

CUSTOMER DRAWING



PART DIMENSIONS	
WIDTH	19.90 [505,4]
DEPTH	22.11 [561,6]
HEIGHT	20.12 [511,1]
CONTAINER CAPACITY	25 QT X 3
CANVAS BAG CAPACITY	18 QT


MIN CABINET OPENING				
	FACE FRAME	FRAMELESS	INSET FACE FRAME	INSET FRAMELESS
WIDTH	19.90 [505,4]	19.90 [505,4]	19.90 [505,4]	19.90 [505,4]
DEPTH	22.11 [561,6]	22.11 [561,6]	22.86 [580,7]	22.86 [580,7]
HEIGHT	20.37 [517,4]	20.37 [517,4]	20.37 [517,4]	20.37 [517,4]

SLIDE SPECIFICATIONS				
SLIDE PART NUMBER	FX81550	RELEASE PART NUMBER	N/A	MAX WEIGHT RATING 150LB
SLIDE TYPE	BALL BEARING	SLIDE EXTENSION	FULL EXTENSION	
SLIDE CLOSING	SOFT	SLIDE LENGTH	550 MM	
SLIDE MOUNTING	BOTTOM	SLIDE FINISH	ZINC	

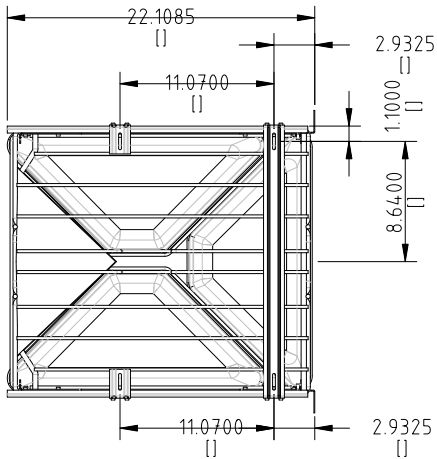
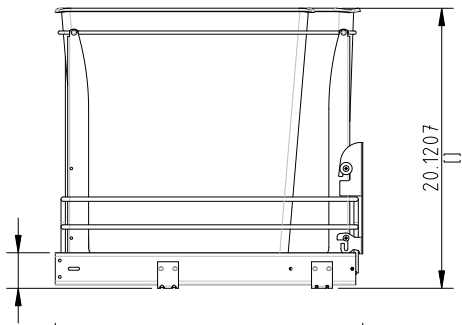
CUSTOMER DRAWING

This drawing is the property of Rev-A-Shelf (RAS) and is disclosed in confidence to the extent its subject matter is original to RAS. Any vendor receiving this drawing from RAS shall hold and use this drawing for the sole benefit of RAS and shall not disclose it to, or use or reproduce it for any third party, or perform any act adverse to the interest of RAS with respect to this drawing without the express written permission of RAS. Vendors shall not revise any physical, dimensional or performance characteristic unless authorized by Rev-A-Shelf Engineering.

REV.	DATE	BY	DESCRIPTION OF CHANGE

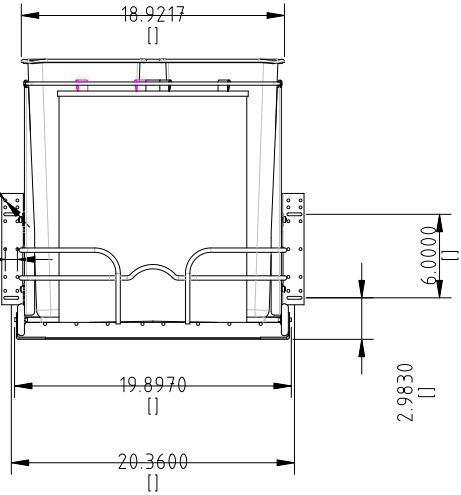
INCH [MM]	AMERICAN PROJECTION 		BY	DATE	REV-A-SHELF®, INC.	
		DRAWN	LCS	6/09/22	SIZE B	TRIPLE 250T RECYCLE CENTER
TOLERANCES MAT. DEC. (WOOD) .XX ±.03 [.8mm] (OTHER) .XX ±.02 [.5mm] (ALL) .XXX ±.005 [.13 mm] FRACTIONS ±1/32 [.8 mm]			ANGLES ± 1/2°	MATERIAL	DRAWING NO. 5BBSC-WMDM24-X	SCALE 0.188
				FINISH	PART NO. 5BBSC-WMDM24-X	SHEET 2 OF 2

2.5559
[]



20.2030
[]

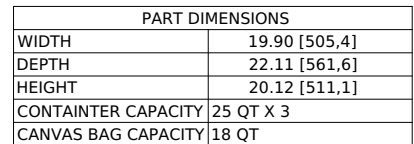
0.8750
[]



This drawing is the property of Rev-A-Shelf (RAS) and is disclosed in confidence to the extent its subject matter is original to RAS. Any vendor receiving this drawing from RAS shall hold and use this drawing for the sole benefit of RAS and shall not disclose it to, or use or reproduce it for any third party, or perform any act adverse to the interest of RAS with respect to this drawing without the express written permission of RAS. Vendors shall not revise any physical, dimensional or performance characteristic unless authorized by Rev-A-Shelf Engineering.

REV.	DATE	BY	DESCRIPTION OF CHANGE

INCH (MM)	AMERICAN PROJECTION	BY	DATE	REV-A-SHELF, INC.			
		DRAWN	LCS	6/09/22	SIZE	B	TRIPLE 25QT RECYCLE
TOLERANCES		MATERIAL		DRAWING NO.	SCALE		
MAT. DEC. .03 [.8mm]		FINISH		5BBSC-WMDM240X150	4X150		
(OTHER) .XX .02 [.5mm]				PART NO.	SHEET		
(ALL) .XX .005 [.13 mm]				5BBSC-WMDM24-X1	OF 2		
FRACTIONS 1/32 [.8 mm]							



MIN CABINET OPENING				
	FACE FRAME	FRAMELESS	INSET FACE FRAME	INSET FRAMELESS
WIDTH	19.90 [505,4]	19.90 [505,4]	19.90 [505,4]	19.90 [505,4]
DEPTH	22.11 [561,6]	22.11 [561,6]	22.86 [580,7]	22.86 [580,7]
HEIGHT	20.37 [517,4]	20.37 [517,4]	20.37 [517,4]	20.37 [517,4]

SLIDE SPECIFICATIONS				
SLIDE PART NUMBER	FK81550	RELEASE PART NUMBER	MPR	MAX WEIGHT RATING
SLIDE TYPE	BALL BEARING	SLIDE EXTENSION	FULL EXTENSION	
SLIDE CLOSING	SOFT	SLIDE LENGTH	550 MM	
SLIDE MOUNTING	BOTTOM	SLIDE FINISH	ZINC	150LB

CUSTOMER DRAWING

This drawing is the property of Rev-A-Shelf (RAS) and is disclosed in confidence to the extent its subject matter is original to RAS. Any vendor receiving this drawing from RAS shall not use this drawing for the sole benefit of RAS and shall not disclose it to, or use or reproduce it for any third party, or perform any act adverse to the interest of RAS with respect to this drawing without the express written permission of RAS. Vendors shall not revise any physical, dimensional or performance characteristic unless authorized by Rev-A-Shelf Engineering.

				(MM)		DRAWING	ECS	07092	SIZE	B	TRIPLE 25QT RECYCLE
					TOLERANCES	MATERIAL	DRAWING NO.	SCALE			
					MAT. DEC.	ANGLES					
					(WOOD) .XX .03 (.8mm)	1/2					
					(OTHER) .XX .02 (.5mm)						
					(ALU.) .XXX .005 (.13 mm)		FINISH	PART NO.			
					FRACTIONS 1/32 (.8 mm)			5BBSC-WMDM24-X2	SHEET OF	2	
REV.	DATE	BY			DESCRIPTION OF CHANGE						