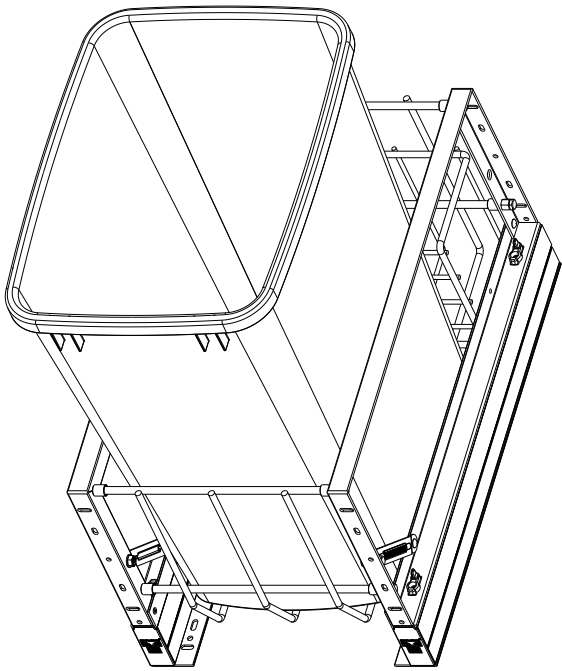
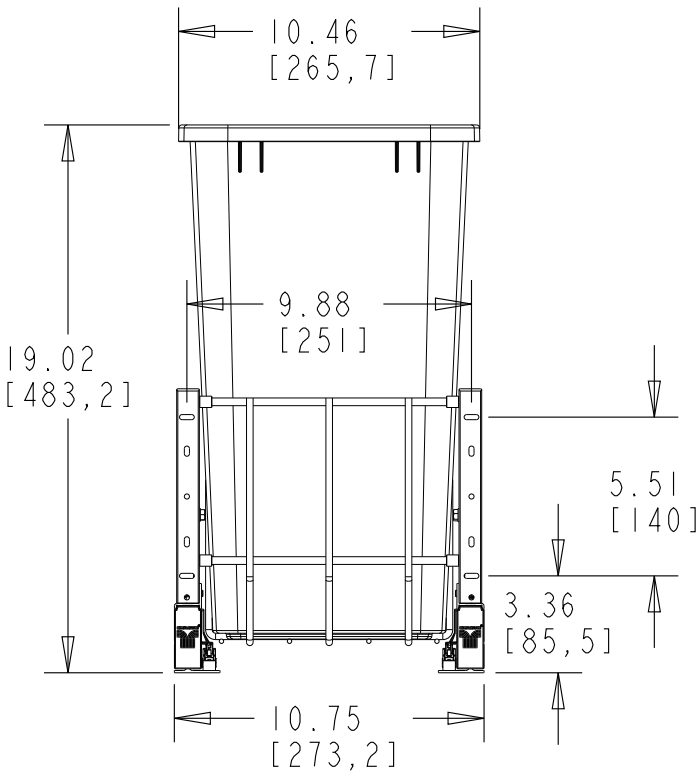


PART DIMENSIONS		
	MIN	MAX
WIDTH	10.75	
DEPTH	17.95	
HEIGHT	19.02	
CONTAINER CAPACITY	35	
CONTAINER UOM	QUART	



MIN CABINET OPENING				
	FACE FRAME	FRAMELESS	INSET FACE FRAME	INSET FRAMELESS
WIDTH	11.00	11.00	11.00	11.00
DEPTH	18.00	18.00	18.75	18.75
HEIGHT	20.50	20.50	20.50	20.50

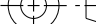
\* 1 MIN. CABINET HEIGHT INCLUDES ROOM FOR LID (SOLD SEPERATELY)

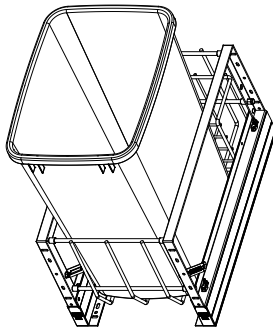
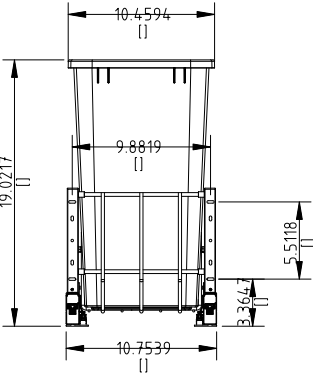
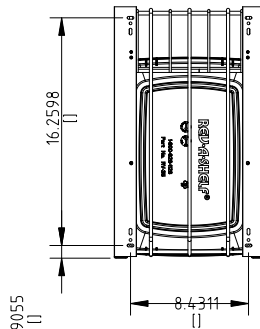
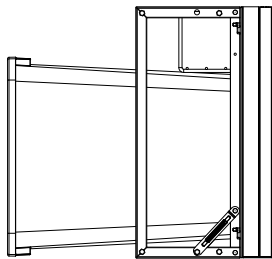
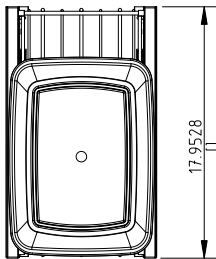
SLIDE SPECIFICATIONS				
SLIDE MANUFACTURER				
SLIDE PART NUMBER		RELEASE PART NUMBER		
SLIDE TYPE	ALUMINUM	SLIDE EXTENSION	1.50 OT	MAX WEIGHT RATING
SLIDE CLOSING	SOFT	SLIDE LENGTH	18.00"	
SLIDE MOUNTING	BOTTOM	SLIDE FINISH	ALUMINUM	85 LB

CUSTOMER DRAWING

This drawing is the property of Rev-A-Shelf (RAS) and is disclosed in confidence to the extent its subject matter is original to RAS. Any vendor receiving this drawing from RAS shall hold and use this drawing for the sole benefit of RAS and shall not disclose it to, or use or reproduce it for any third party, or perform any act adverse to the interest of RAS with respect to this drawing without the express written permission of RAS. Vendors shall not revise any physical, dimensional or performance characteristic unless authorized by Rev-A-Shelf Engineering.

REV.	DATE	BY	DESCRIPTION OF CHANGE

INCH [MM]	AMERICAN PROJECTION 	DRAWN	BY KRR	DATE 8-9-21	REV-A-SHELF®, INC.	
					SIZE B	SINGLE 35QT PULL OUT
<i>TOLERANCES</i> MAT. DEC. (WOOD) .XX ±.03 [.8mm] (OTHER) .XX ±.02 [.5mm] (ALL) .XXX ±.005 [.13 mm] FRACTIONS ±1/32 [.8 mm]		ANGLES ±1/2°	MATERIAL		DRAWING NO. 5349-15DM18-1	SCALE 0.150
			FINISH		PART NO. 5349-15DM18-1	SHEET 1 OF 1



PART DIMENSIONS		
	MIN	MAX
WIDTH	10.75	
DEPTH	17.95	
HEIGHT	19.02	
CONTAINER CAPACITY	35	
CONTAINER UOM	QUART	


MIN CABINET OPENING				
	FACE FRAME	FRAMELESS	INSET FACE FRAME	INSET FRAMELESS
WIDTH	11.00	11.00	11.00	11.00
DEPTH	18.00	18.00	18.75	18.75
HEIGHT	20.50	20.50	20.50	20.50

\* I MIN. CABINET HEIGHT INCLUDES ROOM FOR LID (SOLD SEPERATELY)

SLIDE SPECIFICATIONS				
SLIDE MANUFACTURER				
SLIDE PART NUMBER		RELEASE PART NUMBER		
SLIDE TYPE	ALUMINUM	SLIDE EXTENSION	1.50 OT	MAX WEIGHT RATING
SLIDE CLOSING	SOFT	SLIDE LENGTH	18.00"	
SLIDE MOUNTING	BOTTOM	SLIDE FINISH	ALUMINUM	85 LB

## CUSTOMER DRAWING

This drawing is the property of Rev-A-Shelf (RAS) and is disclosed in confidence to the extent its subject matter is original to RAS. Any vendor receiving this drawing from RAS shall hold and use this drawing for the sole benefit of RAS and shall not disclose it to, or use or reproduce it for any third party, or perform any act adverse to the interest of RAS with respect to this drawing without the express written permission of RAS. Vendors shall not revise any physical, dimensional or performance characteristic unless authorized by Rev-A-Shelf Engineering.

						DRAWN KRN		8-9-21		SIZE B		SINGLE 35QT PULL OUT	
				TOLERANCES		MATERIAL		DRAWING NO.		SCALE			
				MAT. DEC.		ANGLES 1/2		5349-15DM18		1:1			
				(WOOD) XX .03 (.8mm)									
				(OTHER) XX .02 (.5mm)									
				(ALU) XXX .005 (.13 mm)									
				FRACTIONS		FINISH		PART NO.		SHEET		OF	
								5349-15DM18		1		1	
REV.	DATE	BY	DESCRIPTION OF CHANGE										