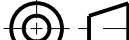
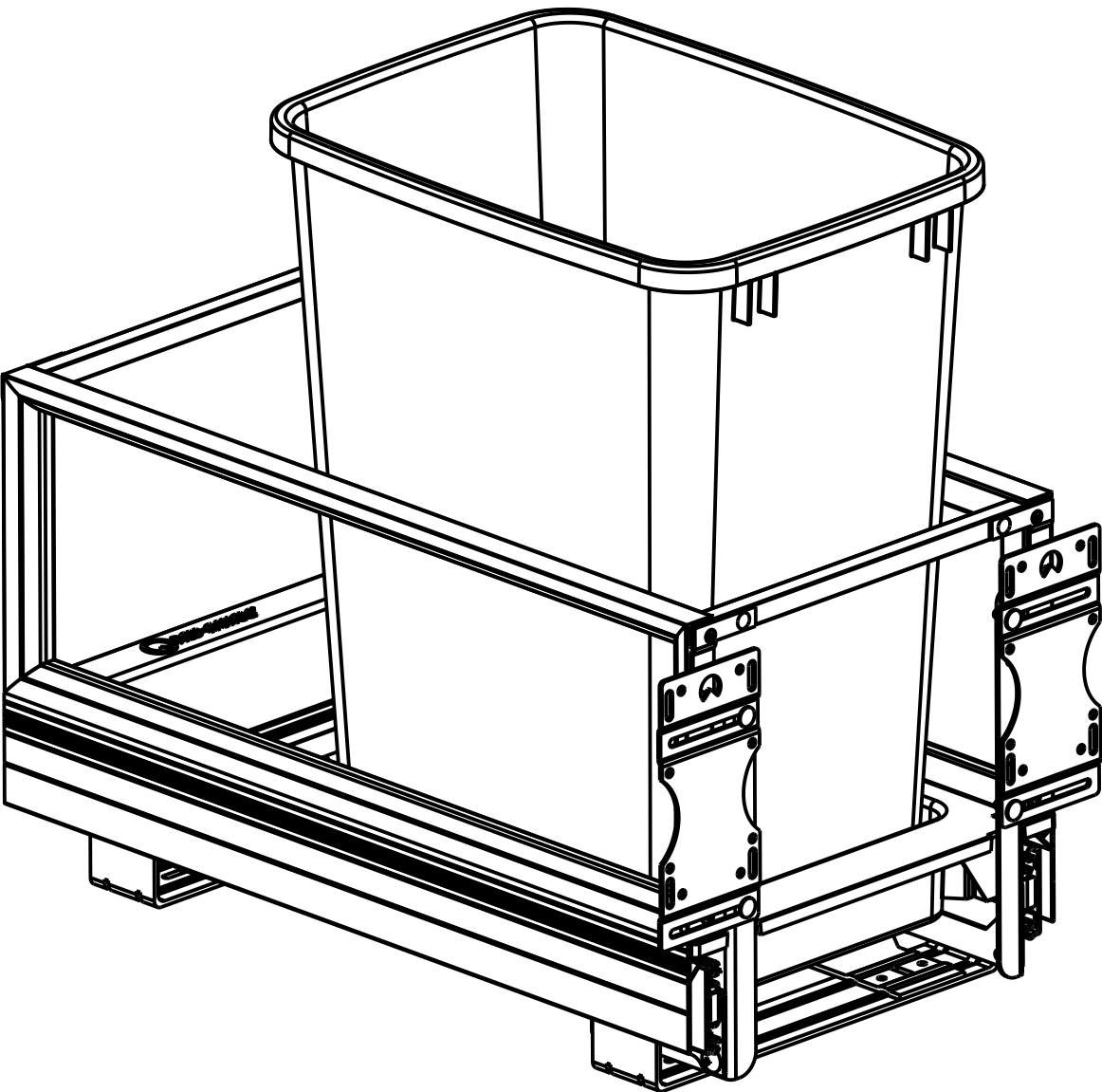


CUSTOMER DRAWING

This drawing is the property of Rev-A-Shelf (RAS) and is disclosed in confidence to the extent its subject matter is original to RAS. Any vendor receiving this drawing from RAS shall hold and use this drawing for the sole benefit of RAS and shall not disclose it to, or use or reproduce it for any third party, or perform any act adverse to the interest of RAS with respect to this drawing without the express written permission of RAS. Vendors shall not revise any physical, dimensional or performance characteristic unless authorized by Rev-A-Shelf Engineering.

REV.	DATE	BY	DESCRIPTION OF CHANGE

INCH [MM]	AMERICAN PROJECTION 		BY	DATE	REV-A-SHELF, Inc.	
		DRAWN	PFC	6/13/13	SIZE B	5149 SERIES SINGLE 35QT WASTE CONT.
TOLERANCES MAT. DEC. .XX ±.03 [.8mm] (OTHER) .XX ±.02 [.5mm] (ALL) .XXX ±.005 [.13 mm] FRACTIONS ±1/32 [.8 mm]			ANGLES ±1/2°	MATERIAL	DRAWING NO. 5149-15DM-117	SCALE 0.180
				FINISH	PART NO. 5149-15DM-117	SHEET OF 1 2



PART DIMENSIONS	
WIDTH	12.02 [305.3]
DEPTH	21.85 [555]
HEIGHT	19.37 [492]
CONTAINER CAPACITY	35QT

MIN CABINET OPENING	
WIDTH	11.50 [292.1] FACE FRAME 12.13 [308.1] FRAMELESS
DEPTH	21.94 [557.3]
HEIGHT	19.75 [501.7]

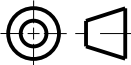
PRODUCT MAX WEIGHT RATING
150LB

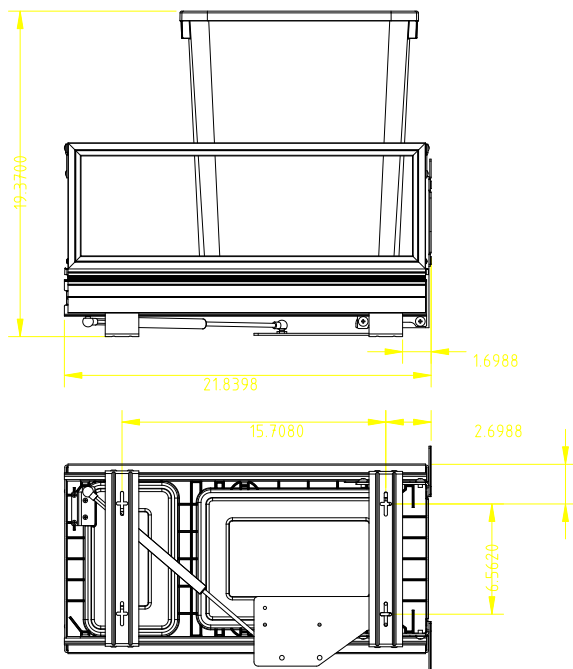
SLIDE SPECIFICATIONS				
SLIDE TYPE	REV-A-MOTION	SLIDE EXTENSION	1.5"OT	MAX WEIGHT RATING
SLIDE CLOSING	SELF/SOFT	SLIDE LENGTH	550MM	
SLIDE MOUNTING	BOTTOM	SLIDE FINISH	ZINC	150LB

CUSTOMER DRAWING

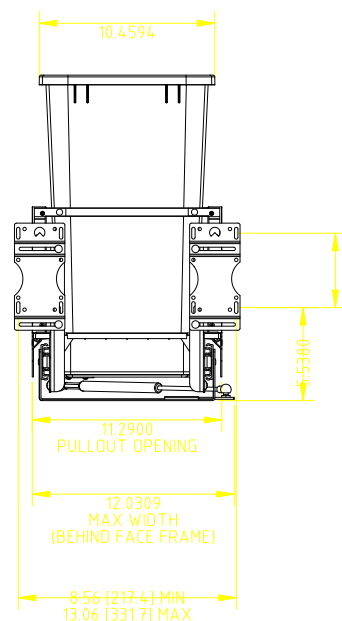
This drawing is the property of Rev-A-Shelf (RAS) and is disclosed in confidence to the extent its subject matter is original to RAS. Any vendor receiving this drawing from RAS shall hold and use this drawing for the sole benefit of RAS and shall not disclose it to, or use or reproduce it for any third party, or perform any act adverse to the interest of RAS with respect to this drawing without the express written permission of RAS. Vendors shall not revise any physical, dimensional or performance characteristic unless authorized by Rev-A-Shelf Engineering.

REV.	DATE	BY	DESCRIPTION OF CHANGE

INCH [MM]	AMERICAN PROJECTION 	DRAWN	BY	DATE	REV-A-SHELF, INC.		
			PFC	6/13/13	SIZE B	5149 SERIES SINGLE 35QT WASTE CONT.	
TOLERANCES MAT. DEC. (WOOD) .XX ±.03 [.8mm] (OTHER) .XX ±.02 [.5mm] (ALL) .XXX ±.005 [.13 mm] FRACTIONS ±1/32 [.8 mm]			ANGLES ±1/2°	MATERIAL	DRAWING NO. 5149-15DM-117	SCALE 0.250	
				FINISH	PART NO. 5149-15DM-117	SHEET 2 OF 2	



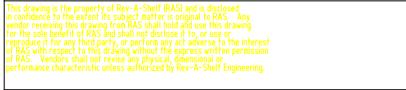
2.3587



This drawing is the property of Rev-A-Shelf (RAS) and is disclosed in confidence to the extent its subject matter is original to RAS. Any vendor receiving this drawing from RAS shall hold and use this drawing for the sole benefit of RAS and shall not disclose it to or use or reproduce it for any third party, or perform any act adverse to the interest of RAS with respect to this drawing without the express written permission of RAS. Vendors shall not revise any physical, dimensional or performance characteristic unless authorized by Rev-A-Shelf Engineering.

REV.	DATE	BY	DESCRIPTION OF CHANGE

INCH (MM)		AMERICAN PROJECTION	DRAWN	BY JAP/PFL	6/13/13	SIZE B	CUSTOMER DRAWING REV-A-SHELF, INC.	
TOLERANCES FRACTIONS DEC		03	MATERIAL		DRAWING NO. SCALE		5149 SERIES SINGLE 350T WASTE CONT.	
005 1/16		02	FINISH		PART NO. DF		5149-150M-117	
1/32 1/8		02					SHEET 2	



				INCH		DRAWN		PFC		07/5/10		SIZE B		5149 SERIES SINGLE 350T WASTE CONT.	
				TOLERANCES MM DEC.		MATERIAL				DRAWING NO SCALE		5149-150M-117		0.250	
				FRACTIONS XX XX		FINISH				PART NO OF		5149-150M-117		SHEET 2 2	
REV	DATE	BY	DESCRIPTION OF CHANGE												