

PART DIMENSIONS	
WIDTH	12.02[305.3]
DEPTH	22.15[556]
HEIGHT	19.81[503]
CONTAINER CAPACITY	(2) 27 QT

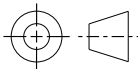
MIN CABINET OPENING				
	FACE FRAME	FRAMELESS	INSET FACE FRAME	INSET FRAMELESS
WIDTH	11.50[292.1]	12.13[308.1]	11.50[292.1]	12.13[308.1]
DEPTH	22.15[562.6]	22.15[562.6]	23.00[584.2]	23.00[584.2]
HEIGHT	20.00[508]	20.00[508]	20.00[508]	20.00[508]

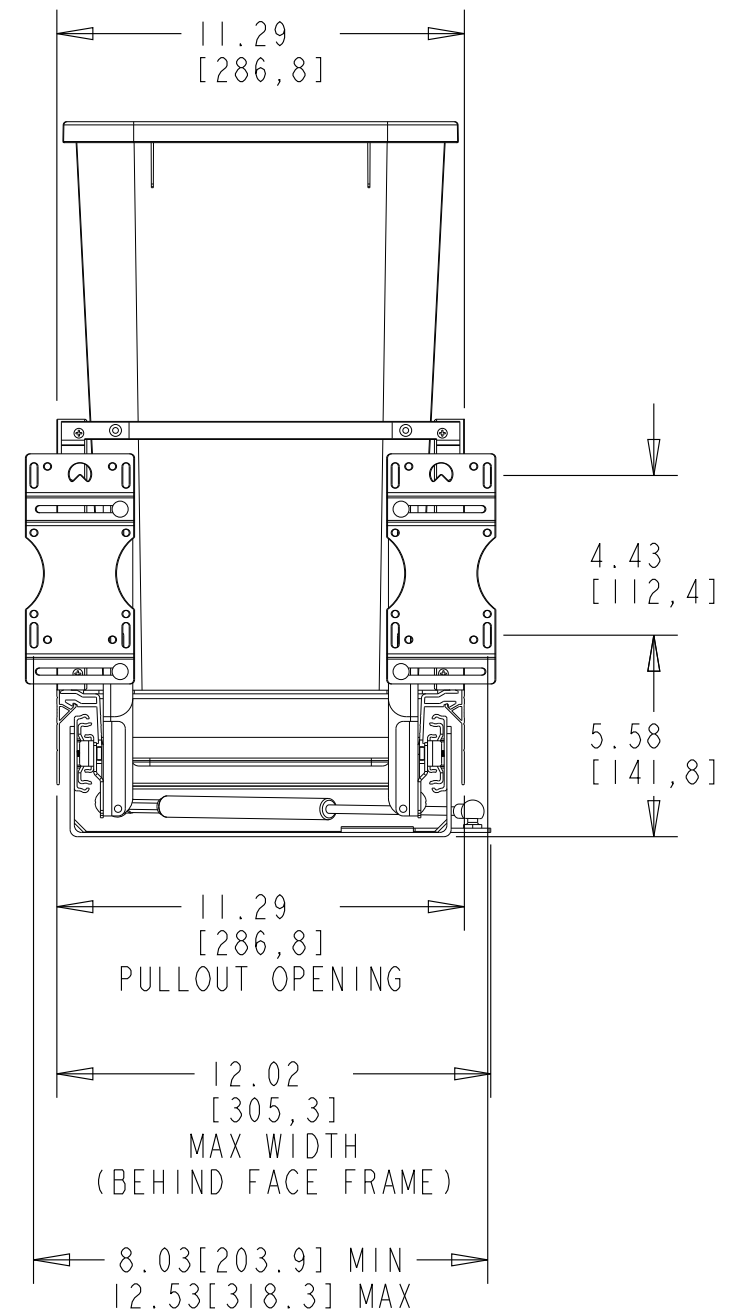
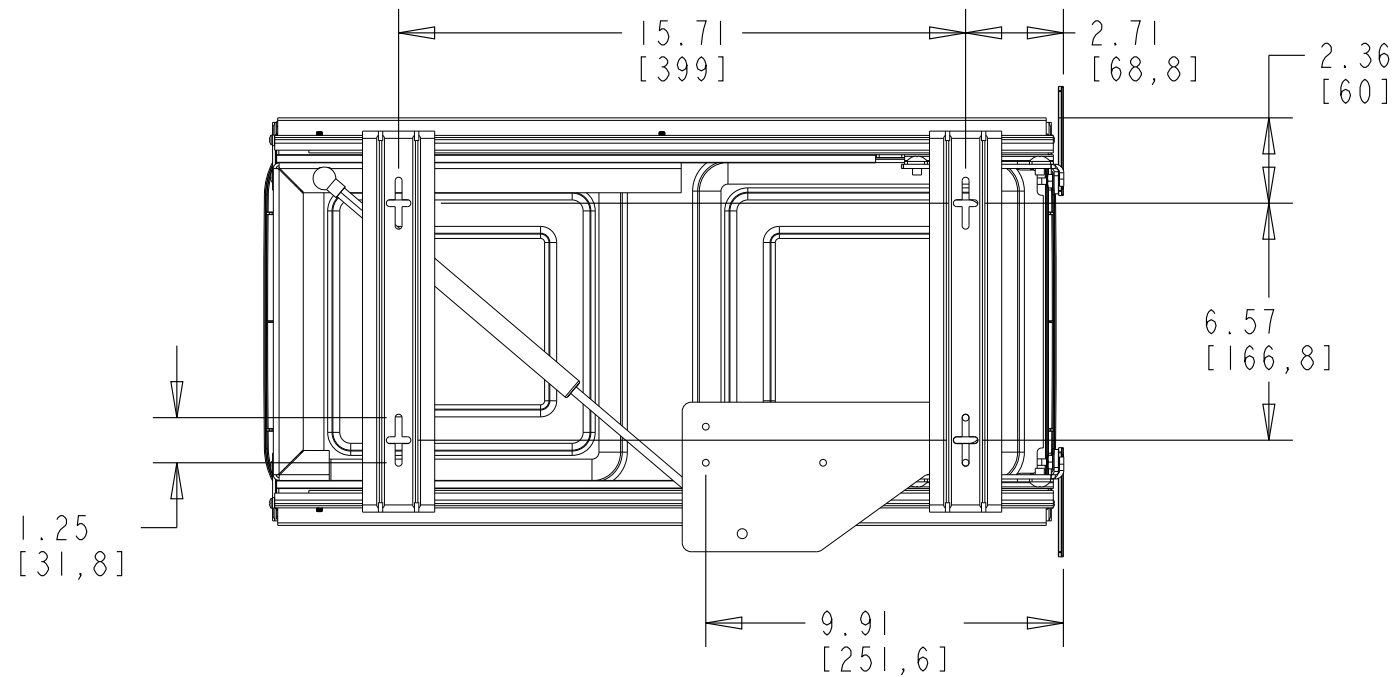
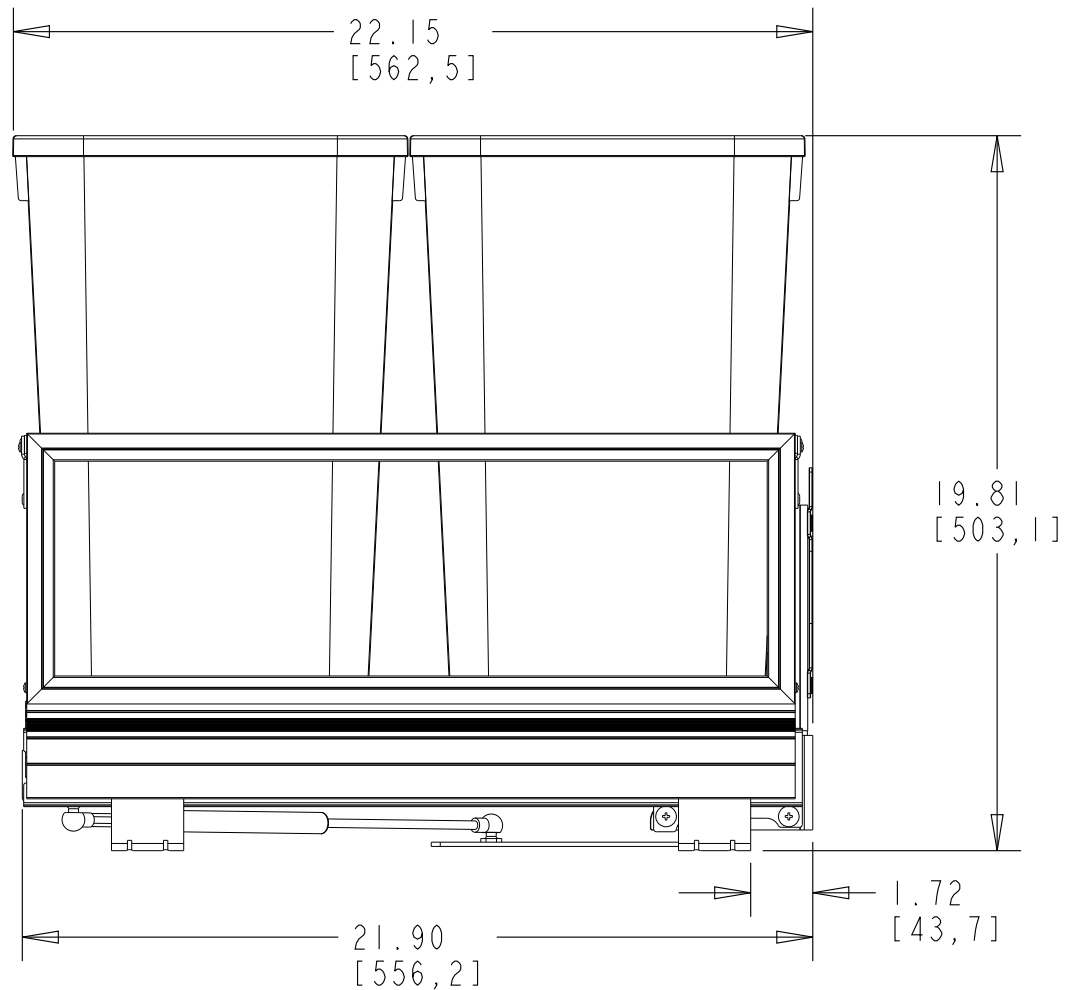
SLIDE SPECIFICATIONS				
SLIDE TYPE		SLIDE EXTENSION	1.5" OT	MAX WEIGHT RATING
SLIDE CLOSING		SLIDE LENGTH	550MM	
SLIDE MOUNTING		SLIDE FINISH	ZINC	150LBS

CUSTOMER DRAWING

This drawing is the property of Rev-A-Shelf (RAS) and is disclosed in confidence to the extent its subject matter is original to RAS. Any vendor receiving this drawing from RAS shall hold and use this drawing for the sole benefit of RAS and shall not disclose it to, or use or reproduce it for any third party, or perform any act adverse to the interest of RAS with respect to this drawing without the express written permission of RAS. Vendors shall not revise any physical, dimensional or performance characteristic unless authorized by Rev-A-Shelf Engineering.

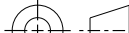
REV.	DATE	BY	DESCRIPTION OF CHANGE

INCH [MM]	AMERICAN PROJECTION 	DRAWN	BY DKK	DATE 4/20/17	REV-A-SHELF®, INC.	
					SIZE B	5149-1527DM-217
TOLERANCES MAT. DEC. (WOOD) .XX ±.03 [.8mm] (OTHER) .XX ±.02 [.5mm] (ALL) .XXX ±.005 [.13 mm] FRACTIONS ±1/32 [.8 mm]		ANGLES ±1/2°	MATERIAL		DRAWING NO. 5149-1527DM-217.CUSTOMER	SCALE 0.250
			FINISH		PART NO. 5149-1527DM-217.CUSTOMER	SHEET 1 OF 2

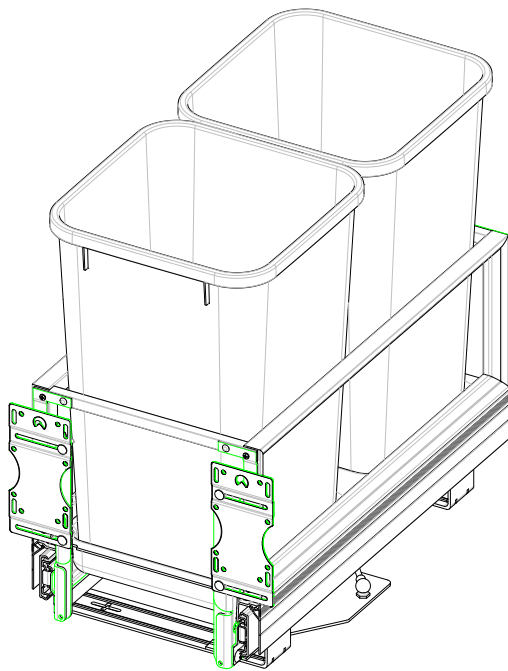


This drawing is the property of Rev-A-Shelf (RAS) and is disclosed in confidence to the extent its subject matter is original to RAS. Any vendor receiving this drawing from RAS shall hold and use this drawing for the sole benefit of RAS and shall not disclose it to, or use or reproduce it for any third party, or perform any act adverse to the interest of RAS with respect to this drawing without the express written permission of RAS. Vendors shall not revise any physical, dimensional or performance characteristic unless authorized by Rev-A-Shelf Engineering.

REV.	DATE	BY	DESCRIPTION OF CHANGE

INCH [MM]	AMERICAN PROJECTION 		BY	DATE	REV-A-SHELF <sup>®</sup> , INC.		
		DRAWN	DKK	4/20/17	SIZE B	5149-1527DM-217	
TOLERANCES		ANGLES ±1/2°	MATERIAL		DRAWING NO. 5149-1527DM-217_CUSTOMER		SCALE 0.188
MAT. DEC.			FINISH		PART NO. 5149-1527DM-217_CUSTOMER		SHEET OF 2 2
(WOOD) .XX ±.03 [.8mm]							
(OTHER) .XX ±.02 [.5mm]							
(ALL) .XXX ±.005 [.13 mm]							
FRACTIONS ±1/32 [.8 mm]							

CUSTOMER DRAWING



PART DIMENSIONS	
WIDTH	12.02[305.3]
DEPTH	22.15[556]
HEIGHT	19.81[503]
CONTAINER CAPACITY	(2) 27 QT

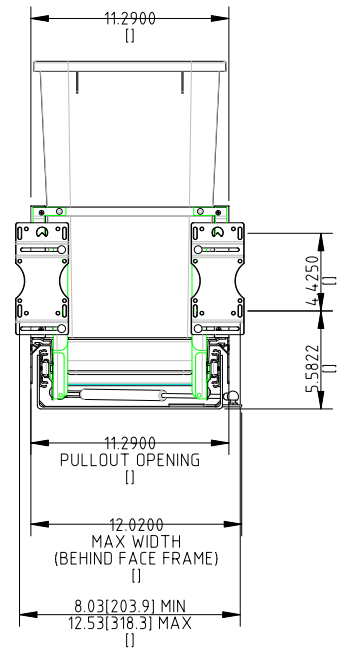
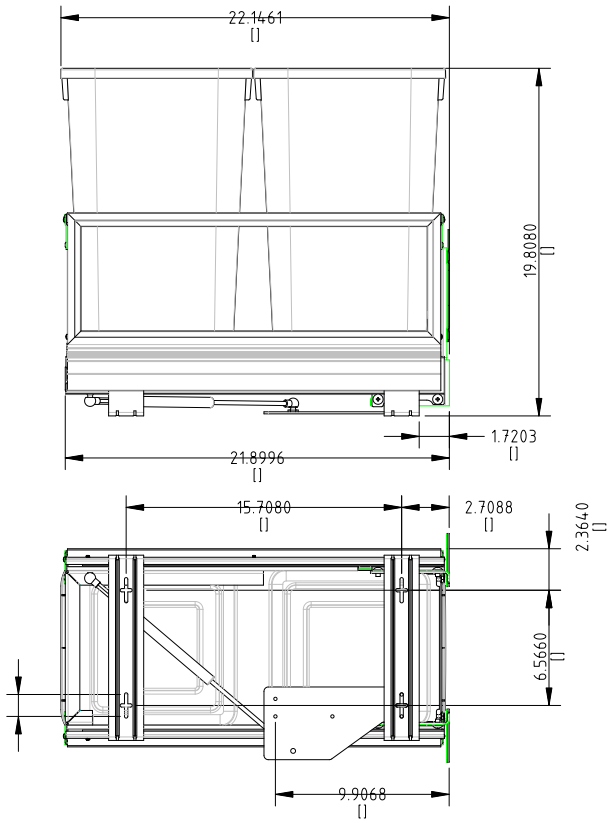
MIN CABINET OPENING				
	FACE FRAME	FRAMELESS	INSET FACE FRAME	INSET FRAMELESS
WIDTH	11.50[292.1]	12.13[308.1]	11.50[292.1]	12.13[308.1]
DEPTH	22.15[562.6]	22.15[562.6]	23.00[584.2]	23.00[584.2]
HEIGHT	20.00[508]	20.00[508]	20.00[508]	20.00[508]

SLIDE SPECIFICATIONS			
SLIDE TYPE	SLIDE EXTENSION	1.5" OT	MAX WEIGHT RATING
SLIDE CLOSING	SLIDE LENGTH	550MM	
SLIDE MOUNTING	SLIDE FINISH	ZINC	150LBS

CUSTOMER DRAWING

This drawing is the property of Rev-A-Shelf (RAS) and is disclosed in confidence to the extent its subject matter is original to RAS. Any vendor receiving this drawing from RAS shall hold and use this drawing for the sole benefit of RAS and shall not disclose it to, or use or reproduce it for any third party, or perform any act adverse to the interest of RAS with respect to this drawing without the express written permission of RAS. Vendors shall not revise any physical, dimensional or performance characteristic unless authorized by Rev-A-Shelf Engineering.

				AMERICAN PROJECTION		BY DATE	REV-A-SHELF, INC.	
				INCH [MM]		DRAWN DKK 4/20/17	SIZE B	5149-1527DM-217
				TOLERANCES		ANGLES	MATERIAL	DRAWING NO.
				MAT. DEC. .03 (.8mm)		1/2		5149-1527DM-217
				(WOOD) .XX .02 (.5mm)				SCALE
				(ALL) .XXX .005 (.13 mm)				5149-1527DM-217
				FRACTIONS 1/32 (.8 mm)				17
REV.	DATE	BY	DESCRIPTION OF CHANGE			FINISH	PART NO.	SHEET OF
							5149-1527DM-217	17



This drawing is the property of Rev-A-Shelf (RAS) and is disclosed in confidence to the extent its subject matter is original to RAS. Any vendor receiving this drawing from RAS shall hold and use this drawing for the sole benefit of RAS and shall not disclose it to, or use or reproduce it for any third party, or perform any act adverse to the interest of RAS with respect to this drawing without the express written permission of RAS. Vendors shall not revise any physical, dimensional or performance characteristic unless authorized by Rev-A-Shelf Engineering.

REV.	DATE	BY	DESCRIPTION OF CHANGE

INCH [MM]		AMERICAN PROJECTION	BY DKK	DATE 4/20/17	REV-A-SHELF, INC.	
TOLERANCES MAT. DEC. .03 [.8mm] (WOOD) .XX .02 [.5mm] (OTHER) .XX .02 [.5mm] (ALL) .XXX .005 [.13 mm] FRACTIONS 1/32 (.8 mm)		ANGLES 1/2	MATERIAL		DRAWING NO. 5149-1527DM-217	SCALE 1"=1'-0"
FINISH		PART NO. 5149-1527DM-217		SHEET OF 17		CUSTOMER

CUSTOMER DRAWING