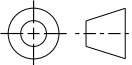


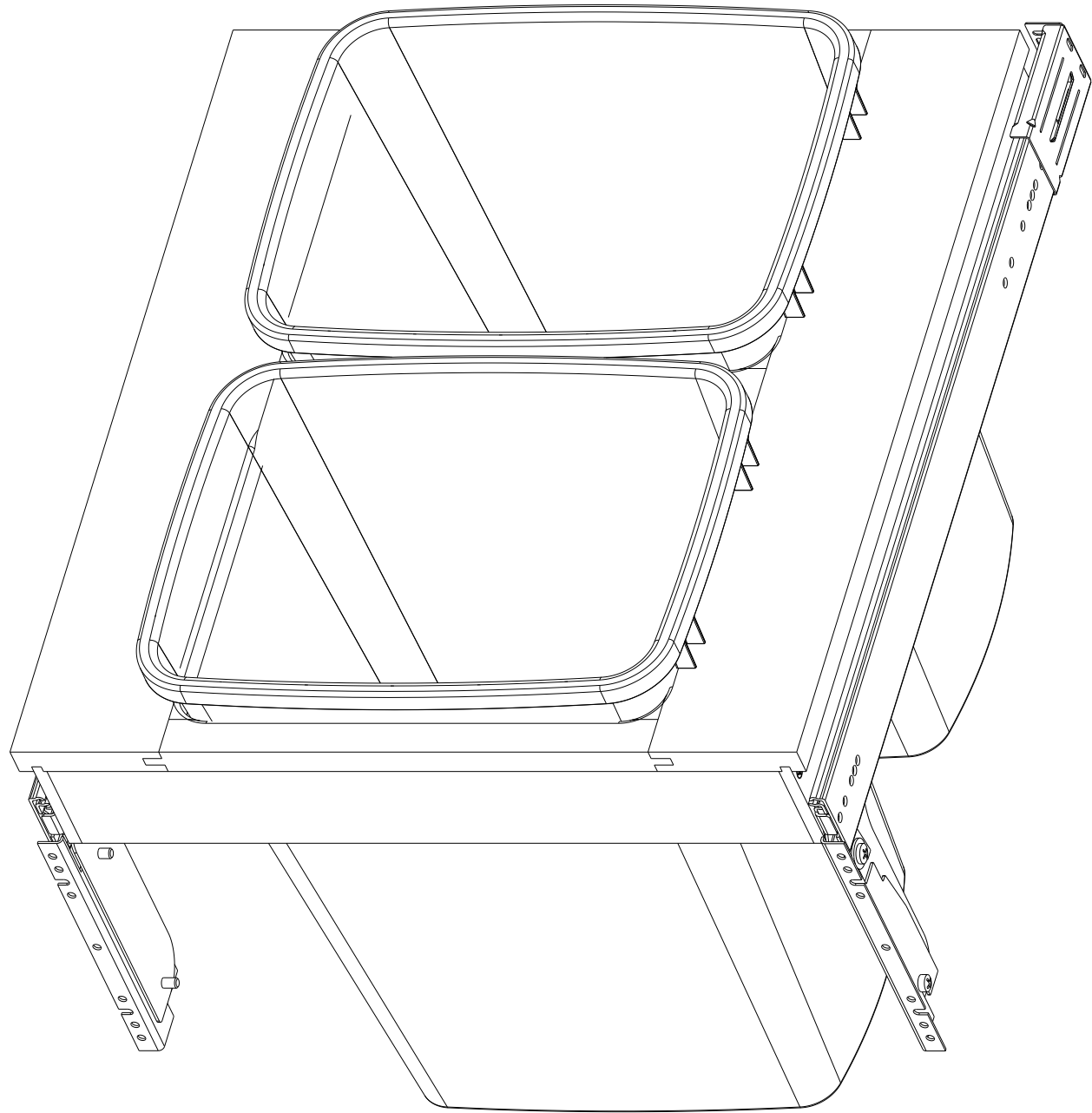
DETAIL A
SCALE 1.000

CUSTOMER DRAWING

This drawing is the property of Rev-A-Shelf (RAS) and is disclosed in confidence to the extent its subject matter is original to RAS. Any vendor receiving this drawing from RAS shall hold and use this drawing for the sole benefit of RAS and shall not disclose it to, or use or reproduce it for any third party, or perform any act adverse to the interest of RAS with respect to this drawing without the express written permission of RAS. Vendors shall not revise any physical, dimensional or performance characteristic unless authorized by Rev-A-Shelf Engineering.

REV.	DATE	BY	DESCRIPTION OF CHANGE

INCH [MM]	AMERICAN PROJECTION 		BY	DATE	REV-A-SHELF®, INC.	
		DRAWN	LCS	6-03-22	SIZE	DOUBLE 35QT
					B	BASE 24 1-5/8 FACE
TOLERANCES		ANGLES ±1/2°	MATERIAL		DRAWING NO.	SCALE
MAT.	DEC.		FINISH		4WCTM-24DM2-162	0.188
(WOOD) .XX ±.03 [.8mm]	(OTHER) .XX ±.02 [.5mm]					
(ALL) .XXX ±.005 [.13 mm]	FRACTIONS ±1/32 [.8 mm]				PART NO.	SHEET OF
					4WCTM-24DM2-162	1 2



PART DIMENSIONS		
	MIN	MAX
WIDTH	20.75	
DEPTH	22.75	24.00
HEIGHT	17.85	
CONTAINER CAPACITY	35	
CONTAINER UOM	QT	

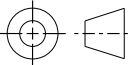
MIN CABINET OPENING	
WIDTH	20.75
DEPTH	22.75
HEIGHT	18.35

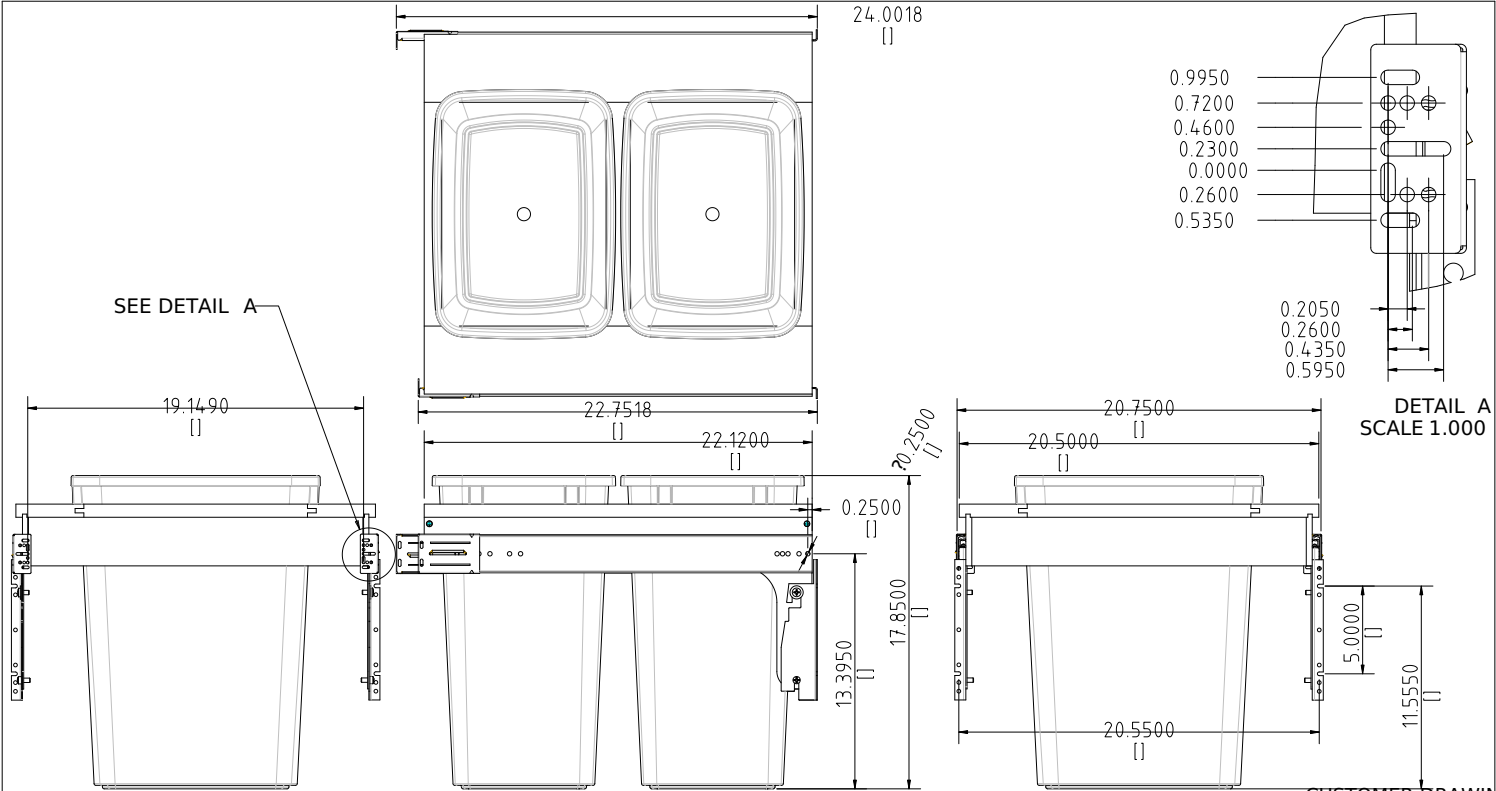
SLIDE SPECIFICATIONS				
SLIDE TYPE	BALL BEARING	SLIDE EXTENSION	1-1/2" O.T.	MAX WEIGHT RATING
SLIDE CLOSING	NORMAL	SLIDE LENGTH	22.00 [560]	
SLIDE MOUNTING	SIDE	SLIDE FINISH	ZINC	150LB

CUSTOMER DRAWING

This drawing is the property of Rev-A-Shelf (RAS) and is disclosed in confidence to the extent its subject matter is original to RAS. Any vendor receiving this drawing from RAS shall hold and use this drawing for the sole benefit of RAS and shall not disclose it to, or use or reproduce it for any third party, or perform any act adverse to the interest of RAS with respect to this drawing without the express written permission of RAS. Vendors shall not revise any physical, dimensional or performance characteristic unless authorized by Rev-A-Shelf Engineering.

REV.	DATE	BY	DESCRIPTION OF CHANGE

INCH [MM]	AMERICAN PROJECTION 	DRAWN	BY	DATE	REV-A-SHELF®, INC.		
			LCS	6-03-22	SIZE	DOUBLE 35QT BASE 24 1-5/8 FACE	
<div>TOLERANCES MAT. DEC. (WOOD) .XX ±.03 [.8mm] (OTHER) .XX ±.02 [.5mm] (ALL) .XXX ±.005 [.13 mm] FRACTIONS ±1/32 [.8 mm]</div>			ANGLES ± 1/2°		MATERIAL	DRAWING NO. 4WCTM-24DM2-162	SCALE 0.25
			FINISH		PART NO. 4WCTM-24DM2-162	SHEET 2	OF 2



DETAIL A
SCALE 1.000

CUSTOMER DRAWING

This drawing is the property of Rev-A-Shelf (RAS) and is disclosed in confidence to the extent its subject matter is original to RAS. Any vendor receiving this drawing from RAS shall hold and use this drawing for the sole benefit of RAS and shall not disclose it to, or use or reproduce it for any third party, or perform any act adverse to the interest of RAS with respect to this drawing without the express written permission of RAS. Vendors shall not revise any physical, dimensional or performance characteristic unless authorized by Rev-A-Shelf Engineering.

REV.	DATE	BY	DESCRIPTION OF CHANGE

AMERICAN PROJECTION		BY	DATE	REV-A-SHELF, INC.	
INCH [MM]		LCS	6-03-22	SIZE	DOUBLE 35QT
TOLERANCES		MATERIAL		DRAWING NO.	B BASE 24 1-5/8 FACE
MAT. DEC.	ANGLES	FINISH		PART NO.	SCALE
(WOOD) .XX .03 (.8mm)	1/2			4WCTM-24DM2	160.188
(OTHER) .XX .02 (.5mm)				4WCTM-24DM2	1621
(ALL) .XXX .005 (.13 mm)					2
FRACTIONS 1/32 (.8 mm)					

SLIDE SPECIFICATIONS				
SLIDE TYPE	BALL BEARING	SLIDE EXTENSION	1-1/2" O.T.	MAX WEIGHT RATING
SLIDE CLOSING	NORMAL	SLIDE LENGTH	22.00 [560]	
SLIDE MOUNTING	SIDE	SLIDE FINISH	ZINC	150LB