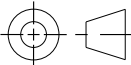


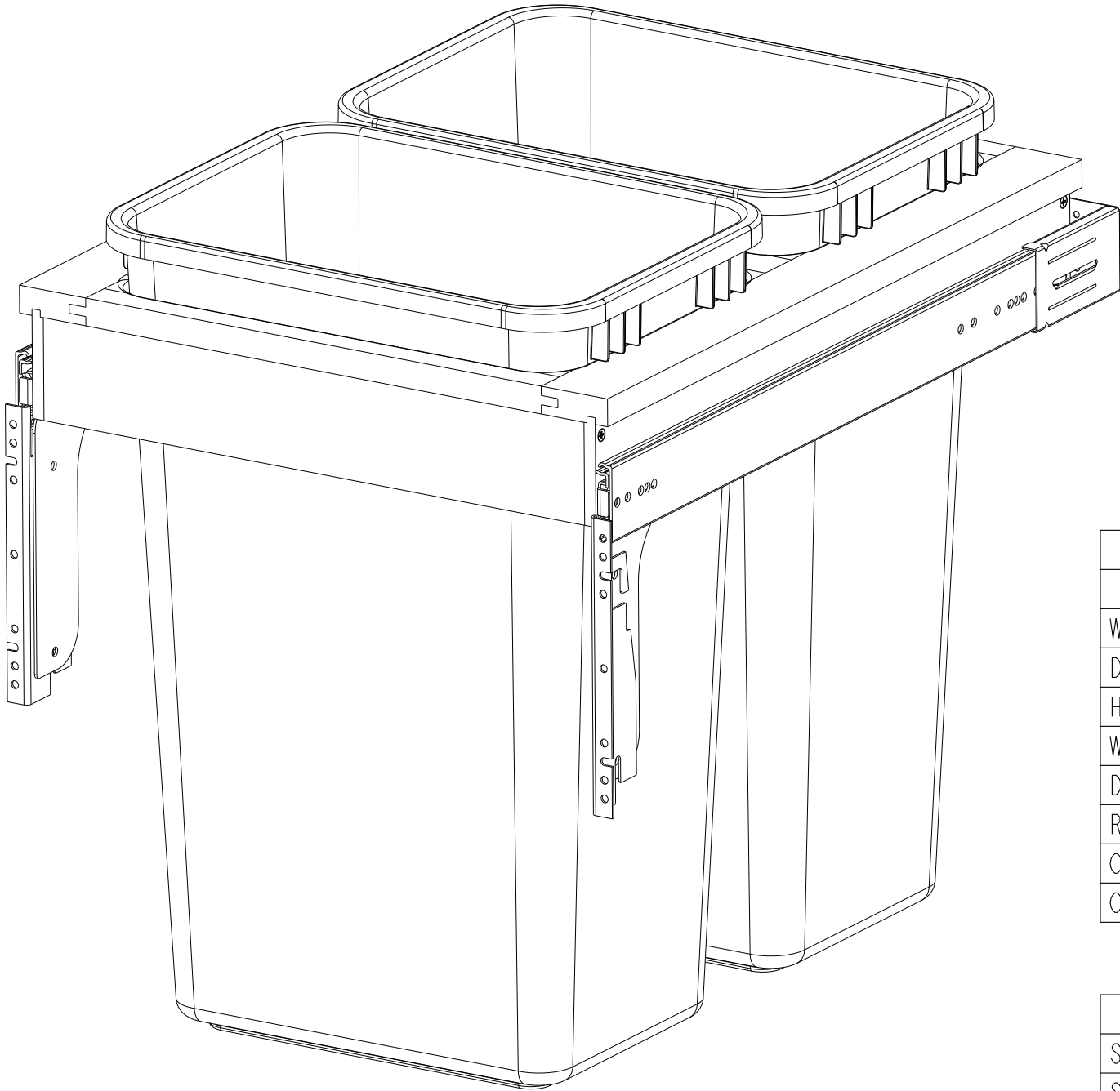
17.80
[452,12]

This drawing is the property of Rev-A-Shelf (RAS) and is disclosed in confidence to the extent its subject matter is original to RAS. Any vendor receiving this drawing from RAS shall hold and use this drawing for the sole benefit of RAS and shall not disclose it to, or use or reproduce it for any third party, or perform any act adverse to the interest of RAS with respect to this drawing without the express written permission of RAS. Vendors shall not revise any physical, dimensional or performance characteristic unless authorized by Rev-A-Shelf Engineering.

REV.	DATE	BY	DESCRIPTION OF CHANGE

INCH [MM]	AMERICAN PROJECTION 	DRAWN	BY	DATE	REV-A-SHELF®, INC.	
			MGD	08/19/08	SIZE B	FULL HEIGHT DOUBLE 50QT TOP MOUNT
TOLERANCES			MATERIAL		DRAWING NO.	SCALE
MAT. DEC.			FINISH		PART NO.	SHEET OF
(WOOD) .XX ±.03 [.8mm]					4WCTM-2150DM-2	0.125
(OTHER) .XX ±.02 [.5mm]					4WCTM-2150DM-2	1 2
(ALL) .XXX ±.005 [.13 mm]						
FRACTIONS ±1/32 [.8 mm]						

CUSTOMER DRAWING



PART DIMENSIONS		
	MIN	MAX
WIDTH		18.00
DEPTH	23.25	24.50
HEIGHT		21.75
WEIGHT		
DIAMETER		
RADIUS		
CONTAINER CAPACITY	50	
CONTAINER UOM	QT	

MIN CABINET OPENING	
WIDTH	18.00
DEPTH	23.25
HEIGHT	22.25


PRODUCT MAX WEIGHT RATING

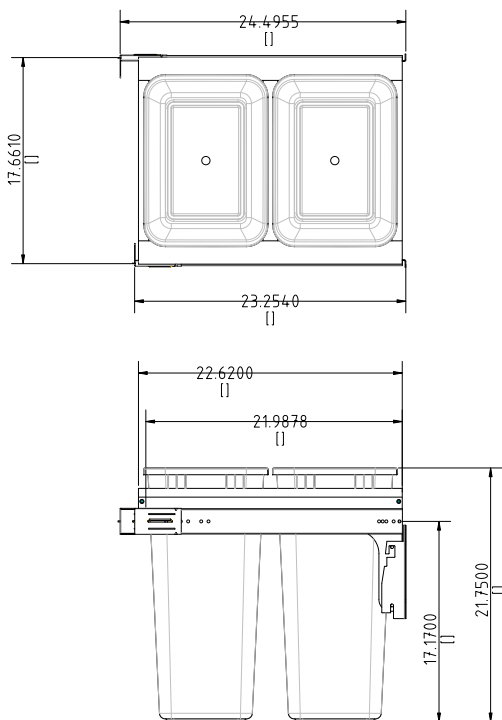
SLIDE SPECIFICATIONS				
SLIDE TYPE	BALL BEARING	SLIDE EXTENSION	1-1/2" O.T.	MAX WEIGHT RATING
SLIDE CLOSING	NORMAL	SLIDE LENGTH	22.00 [560,0]	
SLIDE MOUNTING	SIDE	SLIDE FINISH	ZINC	150LB

CUSTOMER DRAWING

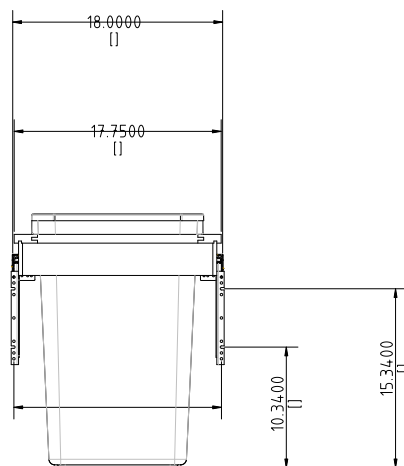
This drawing is the property of Rev-A-Shelf (RAS) and is disclosed in confidence to the extent its subject matter is original to RAS. Any vendor receiving this drawing from RAS shall hold and use this drawing for the sole benefit of RAS and shall not disclose it to, or use or reproduce it for any third party, or perform any act adverse to the interest of RAS with respect to this drawing without the express written permission of RAS. Vendors shall not revise any physical, dimensional or performance characteristic unless authorized by Rev-A-Shelf Engineering.

REV.	DATE	BY	DESCRIPTION OF CHANGE

INCH [MM]	AMERICAN PROJECTION 	DRAWN	BY	DATE	REV-A-SHELF®, INC.	
			MGD	08/19/08	SIZE B	FULL HEIGHT DOUBLE 50QT TOP MOUNT
TOLERANCES MAT. DEC. (WOOD) .XX ±.03 [.8mm] (OTHER) .XX ±.02 [.5mm] (ALL) .XXX ±.005 [.13 mm] FRACTIONS ±1/32 [.8 mm]			ANGLES ±1/2°	MATERIAL	DRAWING NO. 4WCTM-2150DM-2	SCALE 0.250
				FINISH	PART NO. 4WCTM-2150DM-2	SHEET 2 OF 2



17.8000
()

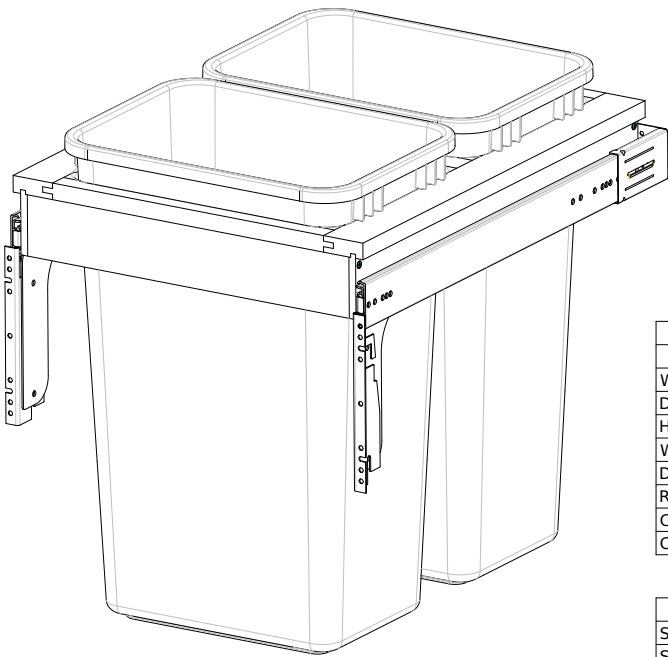


This drawing is the property of Rev-A-Shelf (RAS) and is disclosed in confidence to the extent its subject matter is original to RAS. Any vendor receiving this drawing from RAS shall hold and use this drawing for the sole benefit of RAS and shall not disclose it to, or use or reproduce it for any third party, or perform any act adverse to the interest of RAS with respect to this drawing without the express written permission of RAS. Vendors shall not revise any physical, dimensional or performance characteristic unless authorized by Rev-A-Shelf Engineering.

REV.	DATE	BY	DESCRIPTION OF CHANGE

AMERICAN PROJECTION		BY	DATE	REV-A-SHELF, INC.	
INCH [MM]		DRAWN	MGD08/19/08	SIZE	FULL HEIGHT DOUBLE
TOLERANCES		MATERIAL		DRAWING NO.	SCALE
MAT. DEC. (WOOD) .XX .03 (.8mm) (OTHER) .XX .02 (.5mm) (ALL) .XX .005 (.13 mm) FRACTIONS 1/32 (.8 mm)		FINISH		4WCTM-2150DM	2125
ANGLES 1/2		PART NO.		4WCTM-2150DM-2	SHEET OF 2

CUSTOMER DRAWING



PART DIMENSIONS		
	MIN	MAX
WIDTH		18.00
DEPTH	23.25	24.50
HEIGHT		21.75
WEIGHT		
DIAMETER		
RADIUS		
CONTAINER CAPACITY	50	
CONTAINER UOM	QT	

MIN CABINET OPENING	
WIDTH	18.00
DEPTH	23.25
HEIGHT	22.25

PRODUCT MAX WEIGHT RATING	

SLIDE SPECIFICATIONS				
SLIDE TYPE	BALL BEARING	SLIDE EXTENSION	1-1/2" O.T.	MAX WEIGHT RATING
SLIDE CLOSING	NORMAL	SLIDE LENGTH	22.00 [560,0]	
SLIDE MOUNTING	SIDE	SLIDE FINISH	ZINC	

CUSTOMER DRAWING

This drawing is the property of Rev-A-Shelf (RAS) and is disclosed in confidence to the extent its subject matter is original to RAS. Any vendor receiving this drawing from RAS shall hold and use this drawing for the sole benefit of RAS and shall not disclose it to, or use or reproduce it for any third party, or perform any act adverse to the interest of RAS with respect to this drawing without the express written permission of RAS. Vendors shall not revise any physical, dimensional or performance characteristic unless authorized by Rev-A-Shelf Engineering.

				AMERICAN PROJECTION		BY	DATE	REV-A-SHELF, INC.	
				INCH [MM]	THIRD ANGLE	DRAWN	MGD	08/19/08	SIZE
				TOLERANCES		MATERIAL		DRAWING NO.	SCALE
				MAT. DEC. (WOOD) .XX .03 [.8mm] (OTHER) .XX .02 [.5mm] (ALL) .XX .005 [.13 mm] FRACTIONS 1/32 (.8 mm)		FINISH		4WCTM-2150DM	250
				REV. DATE BY DESCRIPTION OF CHANGE		PART NO.		4WCTM-2150DM	SHEET OF 2