


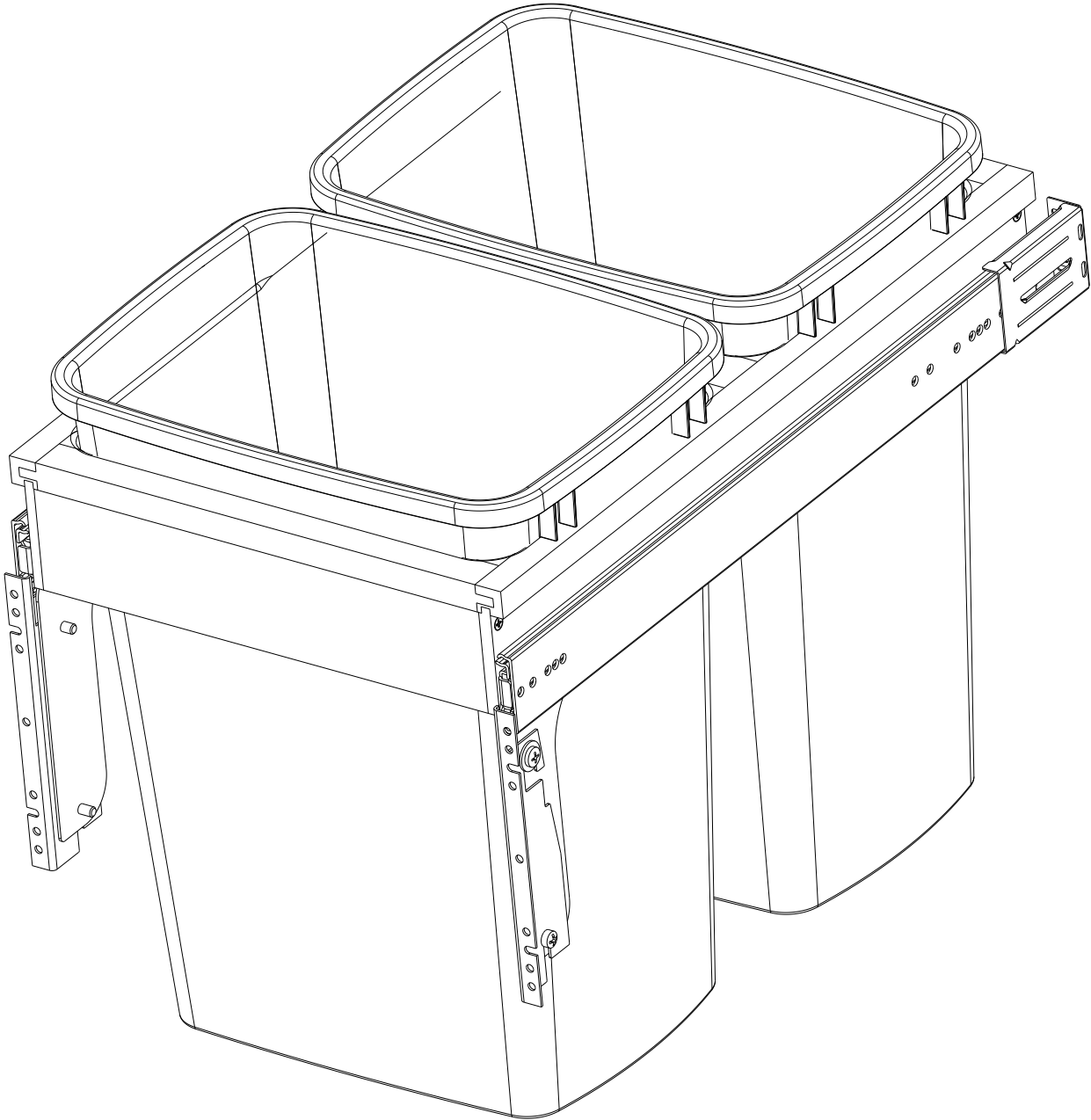
DETAIL A
SCALE 0.500

CUSTOMER DRAWING

This drawing is the property of Rev-A-Shelf (RAS) and is disclosed in confidence to the extent its subject matter is original to RAS. Any vendor receiving this drawing from RAS shall hold and use this drawing for the sole benefit of RAS and shall not disclose it to, or use or reproduce it for any third party, or perform any act adverse to the interest of RAS with respect to this drawing without the express written permission of RAS. Vendors shall not revise any physical, dimensional or performance characteristic unless authorized by Rev-A-Shelf Engineering.

REV.	DATE	BY	DESCRIPTION OF CHANGE

INCH [MM]	AMERICAN PROJECTION			BY	DATE	REV-A-SHELF [®] , INC.	
		DRAWN	LCS	6-03-22	SIZE B	DOUBLE 35QT BASE 18 1-3/4 FACE	
							
TOLERANCES				MATERIAL		DRAWING NO.	SCALE
MAT. DEC.		ANGLES ±1/2°				4WCTM-18DM2-175	0.188
(WOOD) .XX ±.03 [.8mm]				FINISH		PART NO.	SHEET OF
(OTHER) .XX ±.02 [.5mm]						4WCTM-18DM2-175	1 2
(ALL) .XXX ±.005 [.13 mm]							
FRACTIONS ±1/32 [.8 mm]							



PART DIMENSIONS		
	MIN	MAX
WIDTH	14.50	
DEPTH	22.75	24.00
HEIGHT	17.85	
CONTAINER CAPACITY	35	
CONTAINER UOM	QT	

MIN CABINET OPENING	
WIDTH	14.50
DEPTH	22.75
HEIGHT	18.35

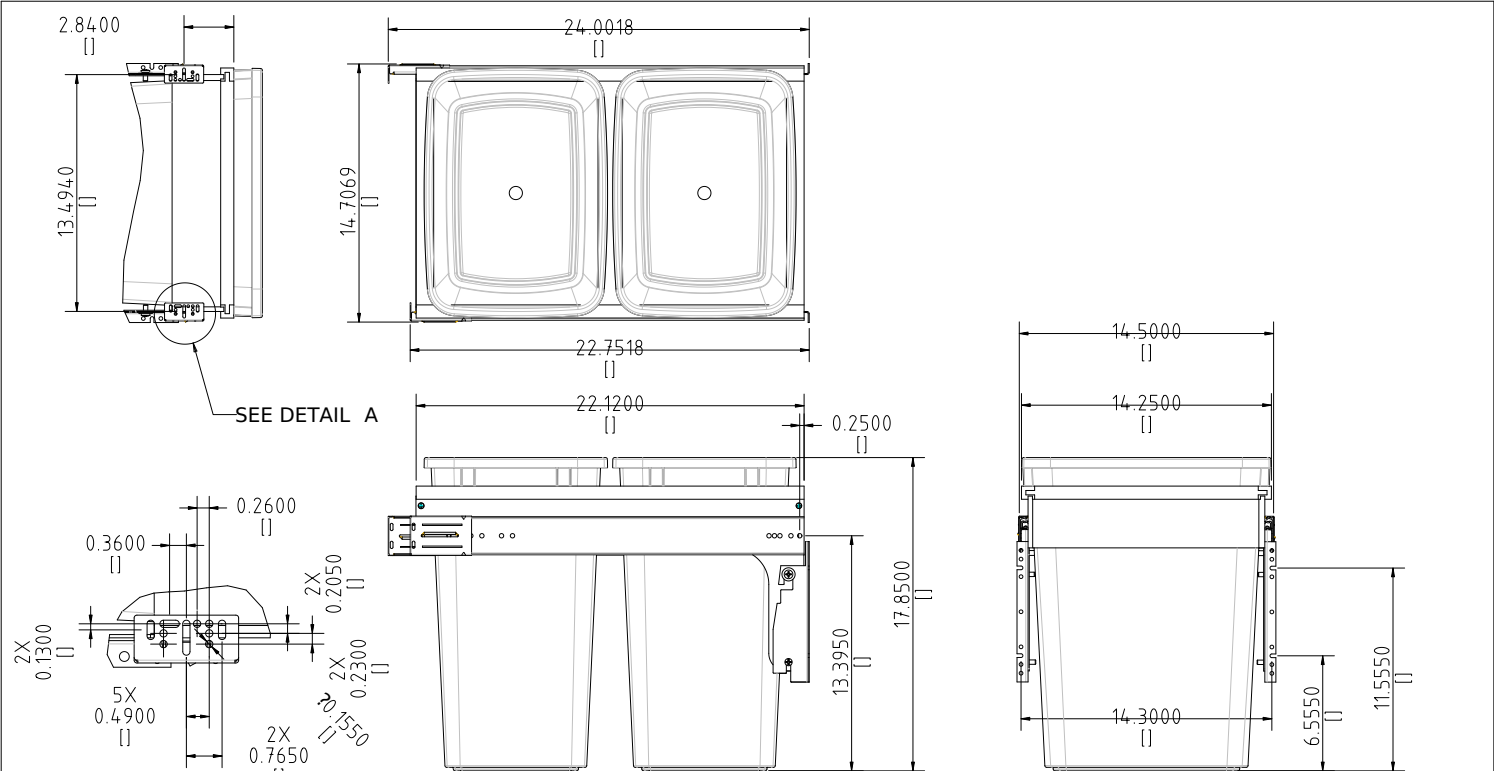
SLIDE SPECIFICATIONS				
SLIDE TYPE	BALL BEARING	SLIDE EXTENSION	1-1/2" O.T.	MAX WEIGHT RATING
SLIDE CLOSING	NORMAL	SLIDE LENGTH	22.00 [560,0]	
SLIDE MOUNTING	SIDE	SLIDE FINISH	ZINC	150LB

CUSTOMER DRAWING

This drawing is the property of Rev-A-Shelf (RAS) and is disclosed in confidence to the extent its subject matter is original to RAS. Any vendor receiving this drawing from RAS shall hold and use this drawing for the sole benefit of RAS and shall not disclose it to, or use or reproduce it for any third party, or perform any act adverse to the interest of RAS with respect to this drawing without the express written permission of RAS. Vendors shall not revise any physical, dimensional or performance characteristic unless authorized by Rev-A-Shelf Engineering.

REV.	DATE	BY	DESCRIPTION OF CHANGE

INCH [MM]	AMERICAN PROJECTION 	DRAWN	BY LCS	DATE 6-03-22	REV-A-SHELF®, INC.		
					SIZE B	DOUBLE 35QT BASE 18 1-3/4 FACE	
TOLERANCES MAT. DEC. (WOOD) .XX ±.03 [.8mm] (OTHER) .XX ±.02 [.5mm] (ALL) .XXX ±.005 [.13 mm] FRACTIONS ±1/32 [.8 mm]		ANGLES ±1/2°	MATERIAL		DRAWING NO. 4WCTM-18DM2-175	SCALE 0.250	
			FINISH		PART NO. 4WCTM-18DM2-175	SHEET 2 OF 2	

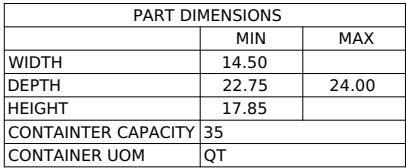


DETAIL A
SCALE 0.500

This drawing is the property of Rev-A-Shelf (RAS) and is disclosed in confidence to the extent its subject matter is original to RAS. Any vendor receiving this drawing from RAS shall hold and use this drawing for the sole benefit of RAS and shall not disclose it to, or use or reproduce it for any third party, or perform any act adverse to the interest of RAS with respect to this drawing without the express written permission of RAS. Vendors shall not revise any physical, dimensional or performance characteristic unless authorized by Rev-A-Shelf Engineering.

REV.	DATE	BY	DESCRIPTION OF CHANGE

AMERICAN PROJECTION		BY	DATE	REV-A-SHELF, INC.	
INCH [MM]	PROJECTION	LCS	6-03-22	SIZE	DOUBLE 35QT
TOLERANCES		MATERIAL		DRAWING NO.	SCALE
MAT. DEC. (WOOD) .XX .03 (.8mm) (OTHER) .XX .02 (.5mm) (ALL) .XX .005 (.13 mm) FRACTIONS 1/32 (.8 mm)		FINISH		4WCTM-18DM2	1751.188
				PART NO.	SHEET OF
				4WCTM-18DM2	1751 2




MIN CABINET OPENING	
WIDTH	14.50
DEPTH	22.75
HEIGHT	18.35

SLIDE SPECIFICATIONS				
SLIDE TYPE	BALL BEARING	SLIDE EXTENSION	1-1/2" O.T.	MAX WEIGHT RATING
SLIDE CLOSING	NORMAL	SLIDE LENGTH	22.00 [560,0]	
SLIDE MOUNTING	SIDE	SLIDE FINISH	ZINC	
				150LB

CUSTOMER DRAWING

This drawing is the property of Rev-A-Sheff (RAS) and is disclosed in confidence to the extent its subject matter is original to RAS. Any vendor receiving this drawing from RAS shall hold and use this drawing for the sole benefit of RAS and shall not disclose it to, or use or reproduce it for any third party, or perform any act adverse to the interest of RAS with respect to this drawing without the express written permission of RAS. Vendors shall not revise any physical, dimensional or performance characteristic unless authorized by Rev-A-Sheff Engineering.

				AMERICAN PROJECTION		BY DATE		REV. A SHALF, INC.	
						DRAWN LCS 6-03-22		SIZE	
								DOUBLE 350T	
								B BASE 18 1-3/4 FACE	
				TOLERANCES		MATERIAL		DRAWING NO.	
				MAT. DEC. (WOOD) XX .03 (.8mm) (OTHER) XX .02 (.5mm)		ANGLES 1/2		SCALE	
				(ALL) XX .005 (.13 mm) FRACTIONS 1/32 (.8 mm)		FINISH		4WCMT-18DM2-179-250	
REV. DATE BY DESCRIPTION OF CHANGE								PART NO.	
								4WCMT-18DM2-1752 SHEET 2	