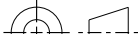
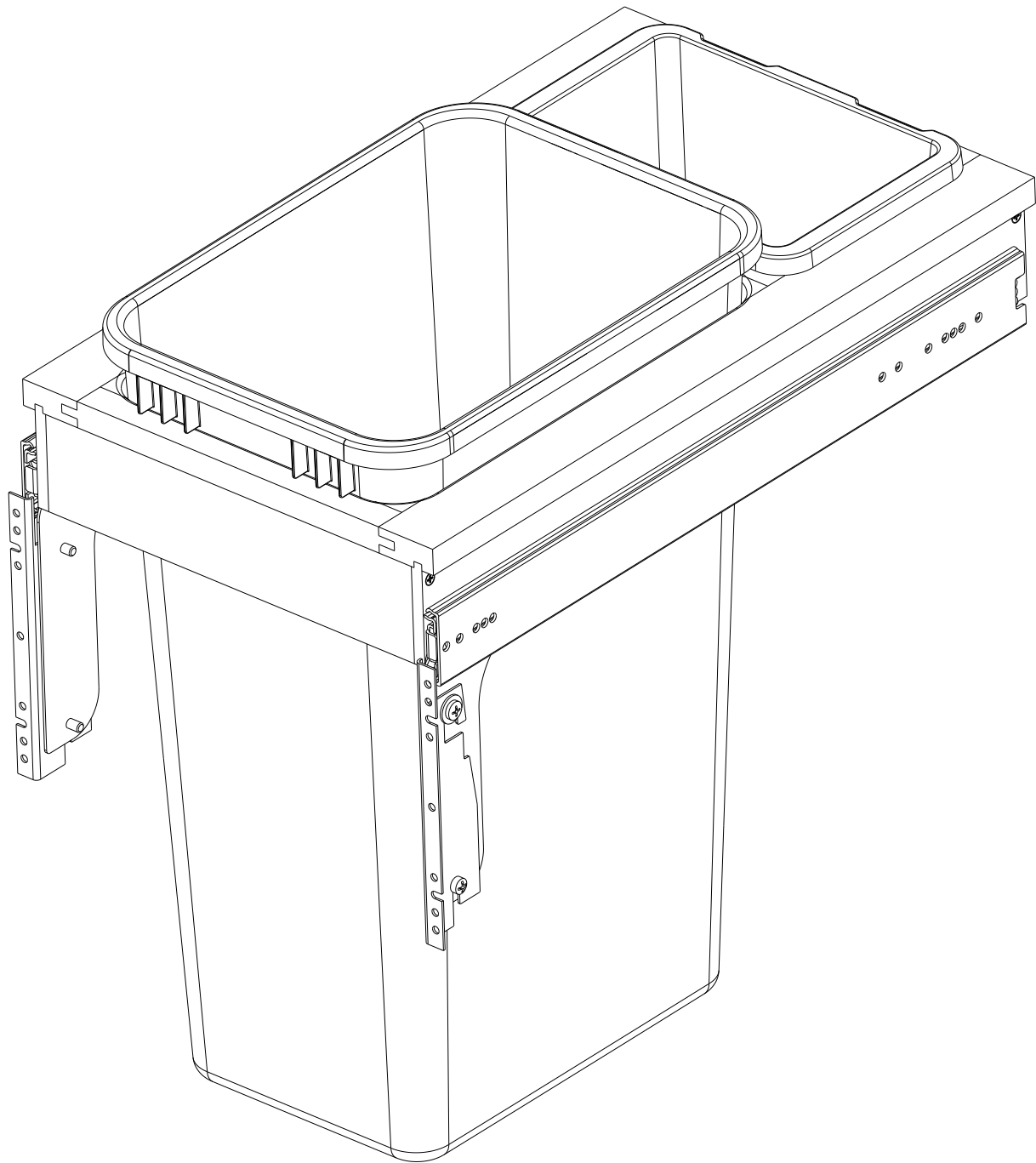


CUSTOMER DRAWING

This drawing is the property of Rev-A-Shelf (RAS) and is disclosed in confidence to the extent its subject matter is original to RAS. Any vendor receiving this drawing from RAS shall hold and use this drawing for the sole benefit of RAS and shall not disclose it to, or use or reproduce it for any third party, or perform any act adverse to the interest of RAS with respect to this drawing without the express written permission of RAS. Vendors shall not revise any physical, dimensional or performance characteristic unless authorized by Rev-A-Shelf Engineering.

REV.	DATE	BY	DESCRIPTION OF CHANGE

INCH [MM]	AMERICAN PROJECTION 			BY	DATE	REV-A-SHELF®, INC.	
		DRAWN	KRR	9-18-20	SIZE B	FL SINGLE 50QT TOP MOUNT	
<i>TOLERANCES</i> MAT. DEC. (WOOD) .XX ±.03 [.8mm] (OTHER) .XX ±.02 [.5mm] (ALL) .XXX ±.005 [.13 mm] FRACTIONS ±1/32 [.8 mm]		ANGLES ±1/2°	MATERIAL		DRAWING NO. 4WCTM-1550DM1-343-FL		SCALE 0.188
			FINISH		PART NO. 4WCTM-1550DM1-343-FL		SHEET OF 1 2



PART DIMENSIONS		
	MIN	MAX
WIDTH	13.50	
DEPTH	22.62	
HEIGHT	21.75	
CONTAINER CAPACITY	50	
CONTAINER UOM	QT	

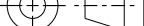
MIN CABINET OPENING				
	FACE FRAME	FRAMELESS	INSET FACE FRAME	INSET FRAMELESS
WIDTH	13.50	13.50	13.50	13.50
DEPTH	23.00	23.00	23.75	23.75
HEIGHT	22.25	22.25	22.25	22.25

SLIDE SPECIFICATIONS				
SLIDE MANUFACTURER				
SLIDE PART NUMBER	FX8022	RELEASE PART NUMBER		
SLIDE TYPE	BALL BEARING	SLIDE EXTENSION	1.50" OT	MAX WEIGHT RATING
SLIDE CLOSING	NORMAL	SLIDE LENGTH	22.00"	
SLIDE MOUNTING	SIDE	SLIDE FINISH	ZINC	150 LB

CUSTOMER DRAWING

This drawing is the property of Rev-A-Shelf (RAS) and is disclosed in confidence to the extent its subject matter is original to RAS. Any vendor receiving this drawing from RAS shall hold and use this drawing for the sole benefit of RAS and shall not disclose it to, or use or reproduce it for any third party, or perform any act adverse to the interest of RAS with respect to this drawing without the express written permission of RAS. Vendors shall not revise any physical, dimensional or performance characteristic unless authorized by Rev-A-Shelf Engineering.

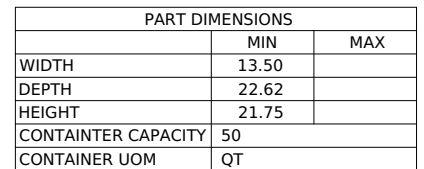
REV.	DATE	BY	DESCRIPTION OF CHANGE

INCH [MM]	AMERICAN PROJECTION 		BY	DATE	REV-A-SHELF®, INC.	
		DRAWN	KRR	9-18-20	SIZE B	FL SINGLE 50QT TOP MOUNT
TOLERANCES MAT. DEC. (WOOD) .XX ±.03 [.8mm] (OTHER) .XX ±.02 [.5mm] (ALL) .XXX ±.005 [.13 mm] FRACTIONS ±1/32 [.8 mm]		ANGLES ±1/2°	MATERIAL		DRAWING NO. 4WCTM-1550DM1-343-FL	SCALE 0.25
			FINISH		PART NO. 4WCTM-1550DM1-343-FL	SHEET 2 OF 2



TOLERANCES
MAT. DEC.
(WOOD) .XX ±.03 [.8mm]
(OTHER) .XX ±.02 [.5mm]
(ALL) .XXX ±.005 [.13 mm]
FRACTIONS ±1/32 [.8 mm]

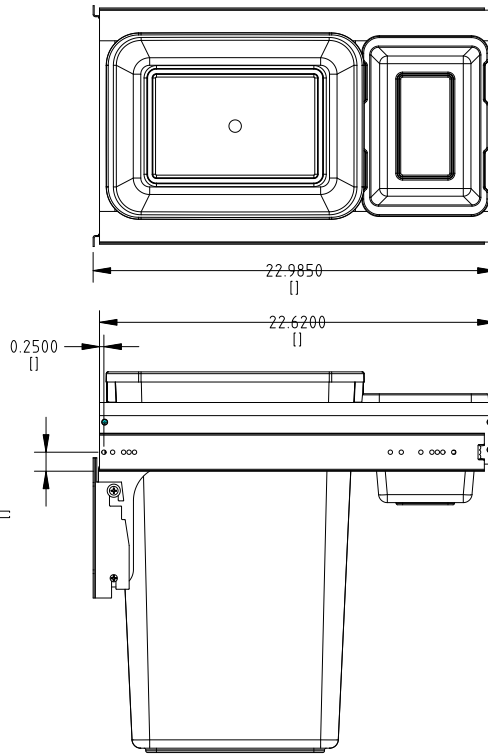
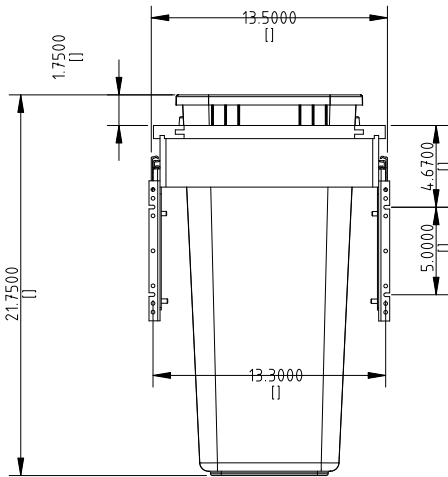
ANGLES
±1/2°



SLIDE SPECIFICATIONS				
SLIDE MANUFACTURER				
SLIDE PART NUMBER	FX8022	RELEASE PART NUMBER		
SLIDE TYPE	BALL BEARING	SLIDE EXTENSION	1.50" OT	MAX WEIGHT RATING
SLIDE CLOSING	NORMAL	SLIDE LENGTH	22.00"	
SLIDE MOUNTING	SIDE	SLIDE FINISH	ZINC	
				150 LB

This drawing is the property of Rev-A-Shelf (RAS) and is disclosed in confidence to the extent its subject matter is original to RAS. Any vendor receiving this drawing from RAS shall not use this drawing for the sole benefit of RAS and shall not disclose it to, or use or reproduce it for any third party, or perform any act adverse to the interest of RAS with respect to this drawing without the express written permission of RAS. Vendors shall not revise any physical, dimensional or performance characteristic unless authorized by Rev-A-Shelf Engineering.

				(MM)		DRAWN	RVN	9-10-2	B	FL SINGLE 50QT TOP MOUNT	
					TOLERANCES	MATERIAL			DRAWING NO.	SCALE	
					MAT. DEC. (WOOD) .XX .03 (8mm) (OTHER) XX .02 (.5mm)	ANGLES 1/2"			4WCTM-1550DM1-343-FR	FR	
					(ALL) XXX .005 (.13 mm) TRACES .12(1.6 mm)	FINISH			PART NO.	SHEET OF	
									4WCTM-1550DM1-343-FR	FR	
REV.	DATE	BY			DESCRIPTION OF CHANGE						



This drawing is the property of Rev-A-Shelf (RAS) and is disclosed in confidence to the extent its subject matter is original to RAS. Any vendor receiving this drawing from RAS shall hold and use this drawing for the sole benefit of RAS and shall not disclose it to, or use or reproduce it for any third party, or perform any act adverse to the interest of RAS with respect to this drawing without the express written permission of RAS. Vendors shall not revise any physical, dimensional or performance characteristic unless authorized by Rev-A-Shelf Engineering.

REV.	DATE	BY	DESCRIPTION OF CHANGE

INCH [MM]	AMERICAN PROJECTION	DRAWN	BY KRR	DATE 9-18-20	REV-A-SHELF, INC.	
					SIZE B	FL SINGLE 50QT TOP MOUNT
		TOLERANCES	ANGLES 1/2	MATERIAL	DRAWING NO.	SCALE
					4WCTM-1550DM	1:1
FINISH				PART NO.	SHEET OF	
				4WCTM-1550DM	1-343-F2	

CUSTOMER DRAWING