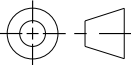
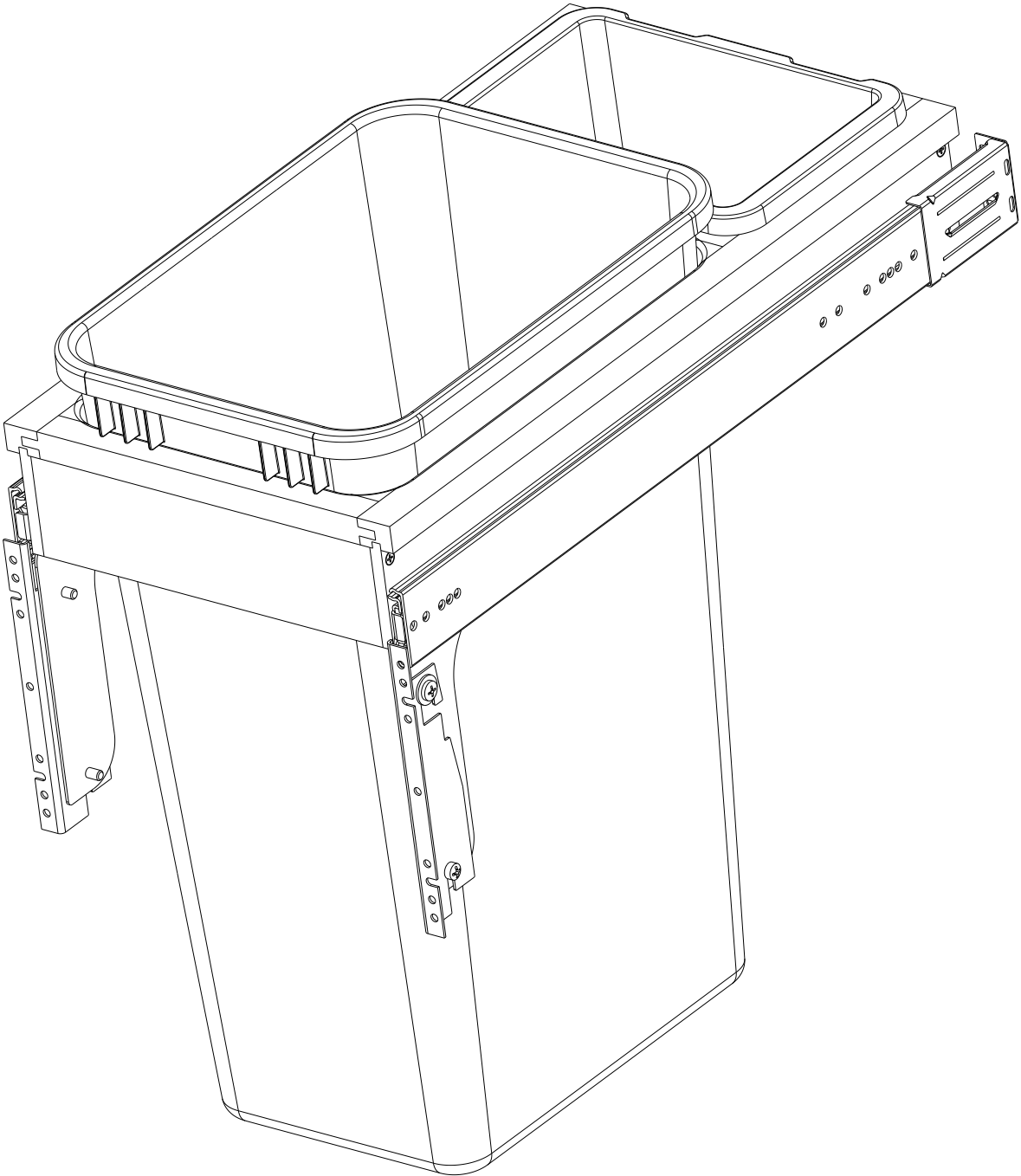


CUSTOMER DRAWING

This drawing is the property of Rev-A-Shelf (RAS) and is disclosed in confidence to the extent its subject matter is original to RAS. Any vendor receiving this drawing from RAS shall hold and use this drawing for the sole benefit of RAS and shall not disclose it to, or use or reproduce it for any third party, or perform any act adverse to the interest of RAS with respect to this drawing without the express written permission of RAS. Vendors shall not revise any physical, dimensional or performance characteristic unless authorized by Rev-A-Shelf Engineering.

REV.	DATE	BY	DESCRIPTION OF CHANGE

INCH [MM]	AMERICAN PROJECTION 	DRAWN	BY MGD	DATE 08/19/08	REV-A-SHELF®, INC.	
					SIZE B	FULL HEIGHT SINGLE 50QT TOP MOUNT
TOLERANCES MAT. DEC. (WOOD) .XX ±.03 [.8mm] (OTHER) .XX ±.02 [.5mm] (ALL) .XXX ±.005 [.13 mm] FRACTIONS ±1/32 [.8 mm]		ANGLES ±1/2°	MATERIAL		DRAWING NO. 4WCTM-1550DM-1-SK-CUST	SCALE 0.188
			FINISH		PART NO. 4WCTM-1550DM-1-SK	SHEET 1 OF 2



PART DIMENSIONS		
	MIN	MAX
WIDTH		12.00
DEPTH	23.25	24.50
HEIGHT		21.75
WEIGHT		
DIAMETER		
RADIUS		
CONTAINER CAPACITY	50	
CONTAINER UOM	QT	

MIN CABINET OPENING	
WIDTH	12.00
DEPTH	23.25
HEIGHT	22.25

PRODUCT MAX WEIGHT RATING

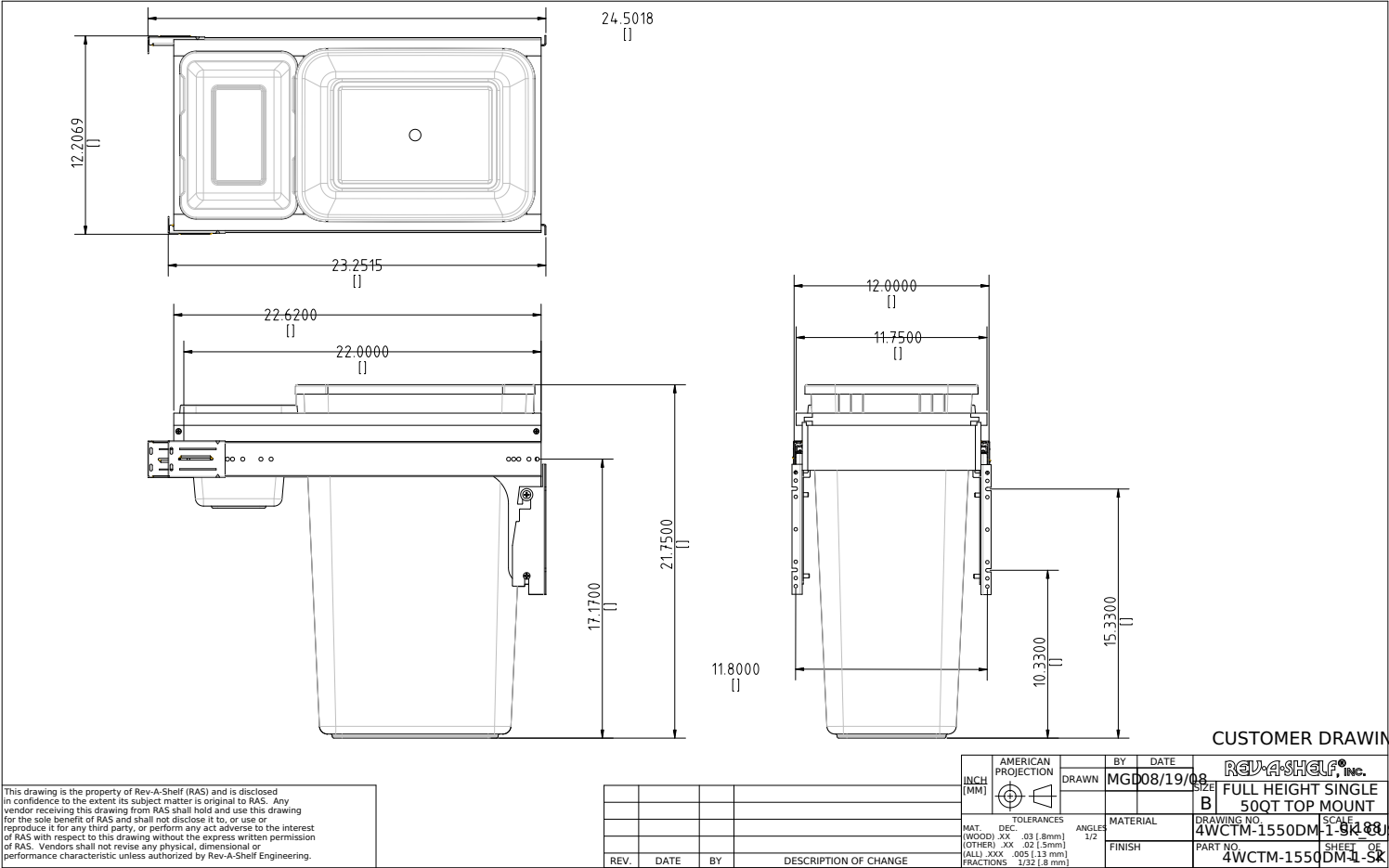
SLIDE SPECIFICATIONS				
SLIDE TYPE	BALL BEARING	SLIDE EXTENSION	1-1/2" O.T.	MAX WEIGHT RATING
SLIDE CLOSING	NORMAL	SLIDE LENGTH	22.00 [560,0]	
SLIDE MOUNTING	SIDE	SLIDE FINISH	ZINC	150LB

CUSTOMER DRAWING

This drawing is the property of Rev-A-Shelf (RAS) and is disclosed in confidence to the extent its subject matter is original to RAS. Any vendor receiving this drawing from RAS shall hold and use this drawing for the sole benefit of RAS and shall not disclose it to, or use or reproduce it for any third party, or perform any act adverse to the interest of RAS with respect to this drawing without the express written permission of RAS. Vendors shall not revise any physical, dimensional or performance characteristic unless authorized by Rev-A-Shelf Engineering.


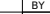

REV.	DATE	BY	DESCRIPTION OF CHANGE

INCH [MM]	AMERICAN PROJECTION 		BY	DATE	REV-A-SHELF®, INC.	
		DRAWN	MGD	08/19/08	SIZE B	FULL HEIGHT SINGLE 50QT TOP MOUNT
TOLERANCES MAT. DEC. (WOOD) .XX ±.03 [.8mm] (OTHER) .XX ±.02 [.5mm] (ALL) .XXX ±.005 [.13 mm] FRACTIONS ±1/32 [.8 mm]			ANGLES ± 1/2°	MATERIAL	DRAWING NO. 4WCTM-1550DM-1-SK_CUST	SCALE 0.250
				FINISH	PART NO. 4WCTM-1550DM-1-SK	SHEET 2 OF 2



This drawing is the property of Rev-A-Shelf (RAS) and is disclosed in confidence to the extent its subject matter is original to RAS. Any vendor receiving this drawing from RAS shall hold and use this drawing for the sole benefit of RAS and shall not disclose it to, or use or reproduce it for any third party, or perform any act adverse to the interest of RAS with respect to this drawing without the express written permission of RAS. Vendors shall not revise any physical, dimensional or performance characteristic unless authorized by Rev-A-Shelf Engineering.

SLIDE SPECIFICATIONS				
SLIDE TYPE	BALL BEARING	SLIDE EXTENSION	1-1/2" O.T.	MAX WEIGHT RATING
SLIDE CLOSING	NORMAL	SLIDE LENGTH	22.00 [560,0]	
SLIDE MOUNTING	SIDE	SLIDE FINISH	ZINC	

		BY	DATE		
INCH	DRAWN	MGD	08/19/08	SIZE	B
				FULL HEIGHT SINGLE 50QT TOP MOUNT	
TOLERANCES		ANGLES	MATERIAL	DRAWING NO.	SCALE
MAT.	DEC.	1/2		4WCMT-1550DM-1-9R20ST	
(WOOD) XX .003 (8.8mm)					
(OTHER) XX .002 (5.1mm)					
(ALL) XX .005 (1.3mm)					
		FINISH	PART NO.	4WCMT-1550DM-2-SK	SHEET OF 2