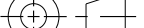
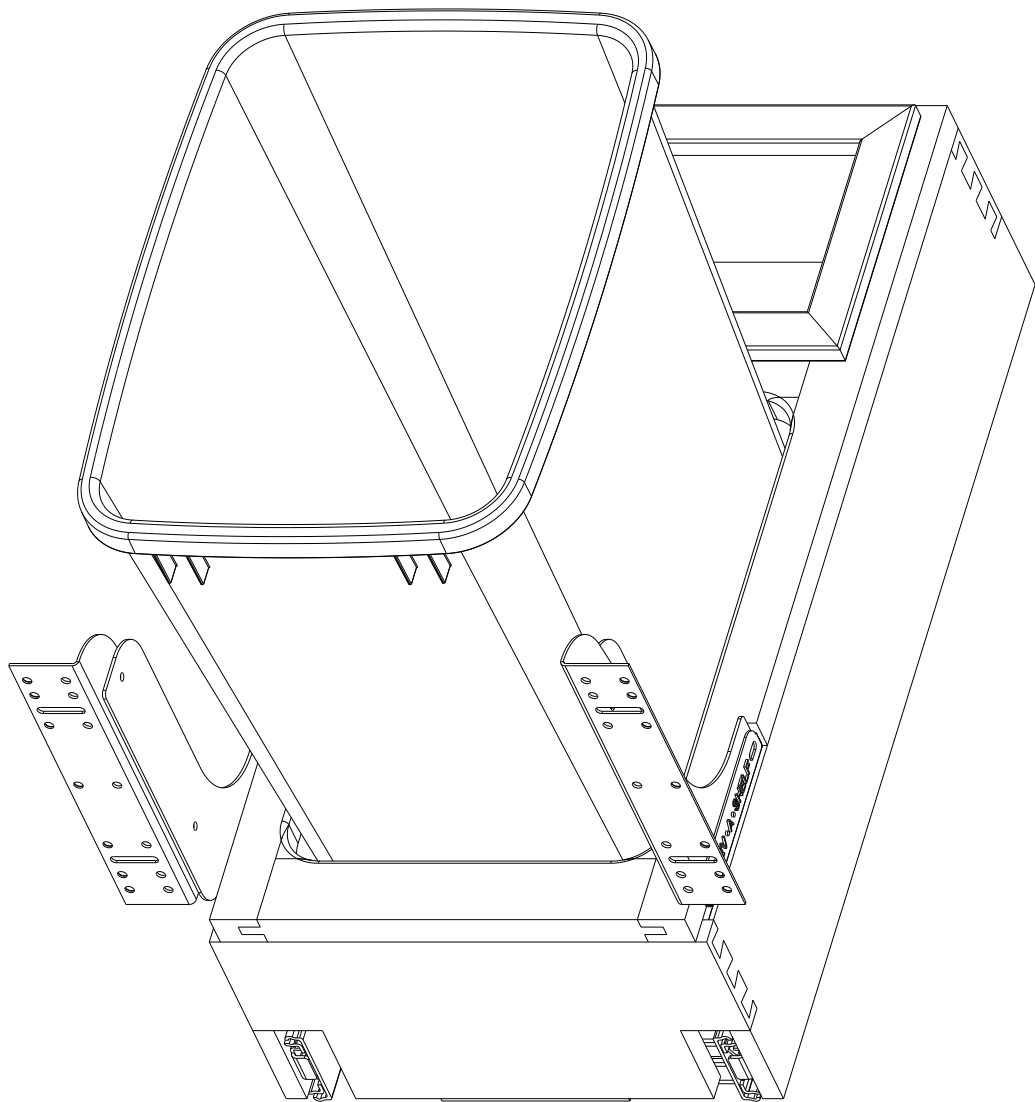


This drawing is the property of Rev-A-Shelf (RAS) and is disclosed in confidence to the extent its subject matter is original to RAS. Any vendor receiving this drawing from RAS shall hold and use this drawing for the sole benefit of RAS and shall not disclose it to, or use or reproduce it for any third party, or perform any act adverse to the interest of RAS with respect to this drawing without the express written permission of RAS. Vendors shall not revise any physical, dimensional or performance characteristic unless authorized by Rev-A-Shelf Engineering.

REV.	DATE	BY	DESCRIPTION OF CHANGE

INCH [MM]	AMERICAN PROJECTION 		BY	DATE	REV-A-SHELF <sup>®</sup> , INC.	
		DRAWN	KRR	6-26-20	SIZE B	WASTE CONTAINER BOTTOM MOUNT SINGLE 35 QT
TOLERANCES			MATERIAL		DRAWING NO.	SCALE
MAT. DEC.			FINISH		4WC-15DMI	1:4
(WOOD) .XX ±.03 [.8mm]						
(OTHER) .XX ±.02 [.5mm]						
(ALL) .XXX ±.005 [.13 mm]						
FRACTIONS ±1/32 [.8 mm]					PART NO.	SHEET OF
					4WC-15DMI	1 2

CUSTOMER DRAWING



PART DIMENSIONS		
	MIN	MAX
WIDTH		11.25
DEPTH		21.65
HEIGHT		19.25
WEIGHT		
DIAMETER		
RADIUS		
CONTAINER CAPACITY	35	
CONTAINER UOM	QUART	

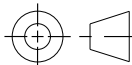
MIN CABINET OPENING				
	FACE FRAME	FRAMELESS	INSET FACE FRAME	INSET FRAMELESS
WIDTH	11.50	11.50	11.50	11.50
DEPTH	21.75	21.75	22.50	22.50
HEIGHT	19.50	19.50	19.50	19.50

SLIDE SPECIFICATIONS				
SLIDE TYPE	BALL BEARING	SLIDE EXTENSION	1 1/2" O.T.	MAX WEIGHT RATING
SLIDE CLOSING	REV-A-MOTION	SLIDE LENGTH	550 MM	
SLIDE MOUNTING		SLIDE FINISH	ZINC	150 LB

CUSTOMER DRAWING

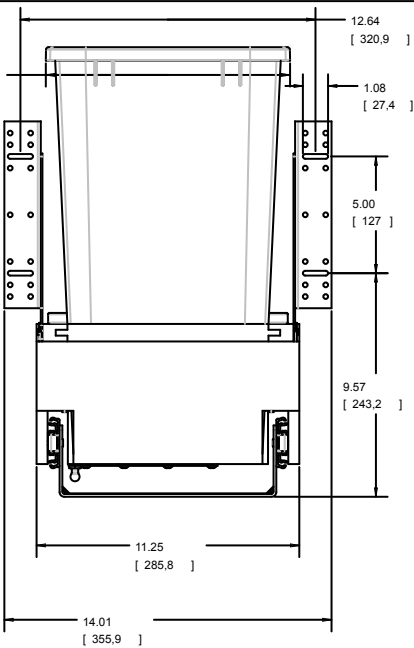
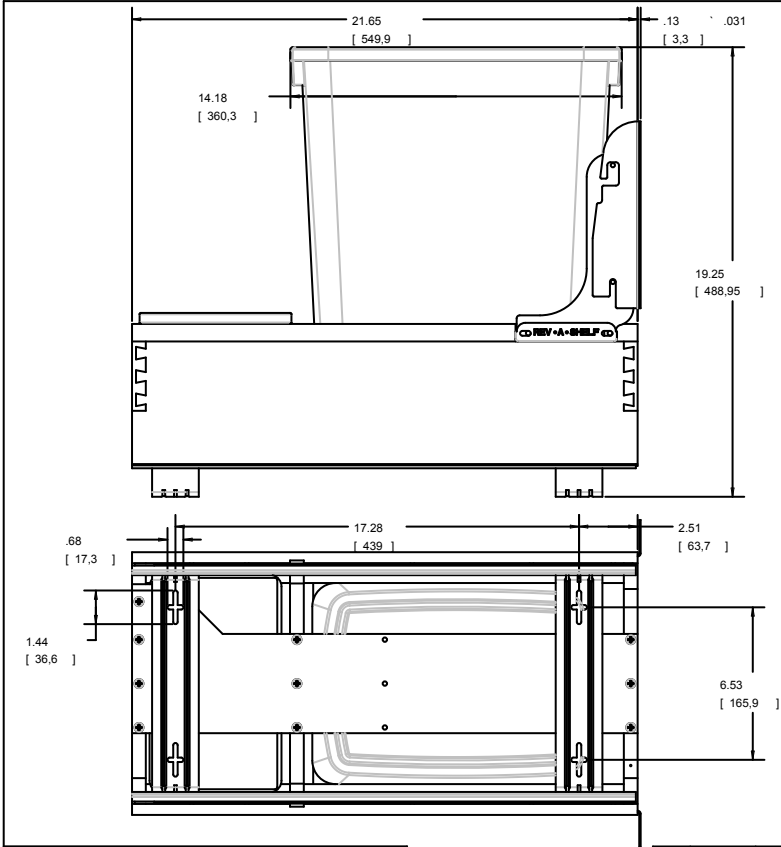
This drawing is the property of Rev-A-Shelf (RAS) and is disclosed in confidence to the extent its subject matter is original to RAS. Any vendor receiving this drawing from RAS shall hold and use this drawing for the sole benefit of RAS and shall not disclose it to, or use or reproduce it for any third party, or perform any act adverse to the interest of RAS with respect to this drawing without the express written permission of RAS. Vendors shall not revise any physical, dimensional or performance characteristic unless authorized by Rev-A-Shelf Engineering.

REV.	DATE	BY	DESCRIPTION OF CHANGE

INCH [MM]	AMERICAN PROJECTION 		BY	DATE	REV-A-SHELF®, INC.	
		DRAWN	KRR	6-26-20	SIZE B	WASTE CONTAINER BOTTOM MOUNT SINGLE 35 QT
<i>TOLERANCES</i> MAT. DEC. (WOOD) .XX ±.03 [.8mm] (OTHER) .XX ±.02 [.5mm] (ALL) .XXX ±.005 [.13 mm] FRACTIONS ±1/32 [.8 mm]		ANGLES ± 1/2°	MATERIAL		DRAWING NO. 4WC-15DMI	SCALE 1 : 4
			FINISH		PART NO. 4WC-15DMI	SHEET 2 OF 2


TOLERANCES  
MAT. DEC.  
(WOOD) .XX ±.03 [.8mm]  
(OTHER) .XX ±.02 [.5mm]  
(ALL) .XXX ±.005 [.13 mm]  
FRACTIONS ±1/32 [.8 mm]

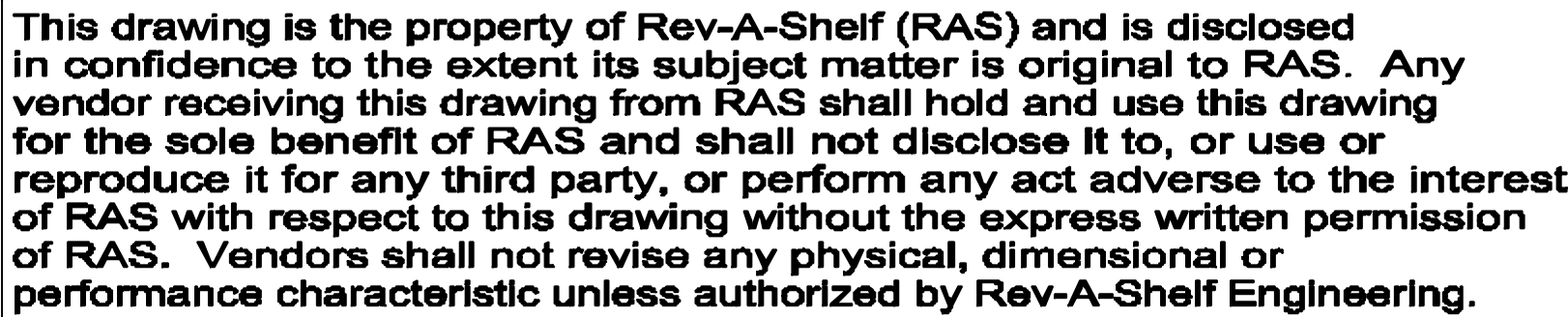
ANGLES  
±1/2°



This drawing is the property of Rev-A-Shelf (RAS) and is disclosed in confidence to the extent its subject matter is original to RAS. Any vendor receiving this drawing from RAS shall hold and use this drawing for the sole benefit of RAS and shall not disclose it to, or use or reproduce it for any third party, or perform any act adverse to the interest of RAS with respect to this drawing without the express written permission of RAS. Vendors shall not revise any physical, dimensional or performance characteristic unless authorized by Rev-A-Shelf Engineering.



REV.	DATE	BY	DESCRIPTION OF CHANGE

AMERICAN PROJECTION		BY DATE		REV-A-SHELF, Inc.					
1/4" UNLESS OTHERWISE SPECIFIED		DRAWN	KRR	6-26-20	SIZE B	WASTE CONTAINER BOTTOM MOUNT SINGLE 35 QT			
TOLERANCES		MATERIAL			DRAWING NO. SCALE				
MILL DEC ANGLES		FINISH			4WC-15DM1 1:4				
HOLE DIA		PART NO. SHEET OF			4WC-15DM1 1 2				
FRACTIONS									



MIN CABINET OPENING				
	FACE FRAME	FRAMELESS	INSET FACE FRAME	INSET FRAMELESS
WIDTH	11.50	11.50	11.50	11.50
DEPTH	21.75	21.75	22.50	22.50
HEIGHT	19.50	19.50	19.50	19.50

## CUSTOMER DRAWING

				INCH [MM]	AMERICAN PROJECTION 	DRAWN	BY KRR	DATE 6-26-20		
									SIZE B	WASTE CONTAINER BOTTOM MOUNT SINGLE 35 QT
				TOLERANCES (WOOD) .XX ~ .03 [.8mm] (OTHER) .XX ~ .02 [.5mm] (ALL) .XXX ~ .005 [.13 mm] FRACTIONS ~ 1/32 [.8 mm]		ANGLES ~ 1/2~	MATERIAL		DRAWING NO. 4WC-15DM1	SCALE 1:4
REV.	DATE	BY	DESCRIPTION OF CHANGE				FINISH		PART NO. 4WC-15DM1	SHEET 2 OF 2