



See how quick and easy it is
to measure your kitchen.

Measuring Guide

BEFORE YOU START

Please be sure to view the CliqStudios.com **Quick Start Measure video** that provides clear step-by-step instructions to help make measuring your kitchen simple and easy.

[WATCH VIDEO »](#)



Quick Measure Video Guide

To get your CliqStudios design started all we need is a simple floor plan of your kitchen. To see how easy it is to measure, and make sure we have dimensions to begin with, please watch this short video.



IT'S EASY

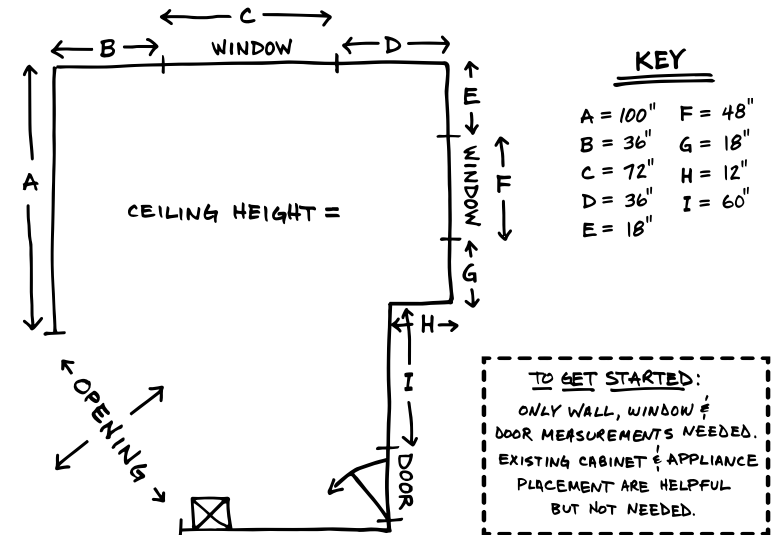
Our Measure Guide is easy to use (yes, it really is easy) and helps collect the basic information to help you and your designer start your design. This does not have to be a work of art but just a clear and accurate drawing of your space. If you want to use the attached graph paper, that's great. If not, then all we need is your drawing. We're here to help — please call **888-350-1242** with any questions.

1 Step 1: Your Kitchen Shape

Draw your kitchen as a box showing all the walls that you think will have cabinets. Be sure to include any major structural features or obstacles.

2 Step 2: Draw It Out

Mark any openings such as windows and doorways. Be sure to include radiators or other obstacles that affect where cabinets can be installed. Now, label all the openings in your kitchen. In this sketch we'll use areas A thru I. Record these letters as a key on your sketch.



IT'S EASY

3

Step 3: Measure

Now it's time to get out the tape measure. Measure all the openings, from outside edge to outside edge, and fill in the key. If you're uncomfortable with precise measurements feel free to round to the nearest inch. Remember this is just to get started, your designer will confirm details later.

4

Step 4: Your Layout

Most people already have a good idea of where the major items will go in their kitchen. Feel free to draw your ideas of what you would like and include the placement of your sink and appliances.

5

Pictures of Your Kitchen

What can really help your designer is to take 'before' pictures of your kitchen and send them along with your measurements.

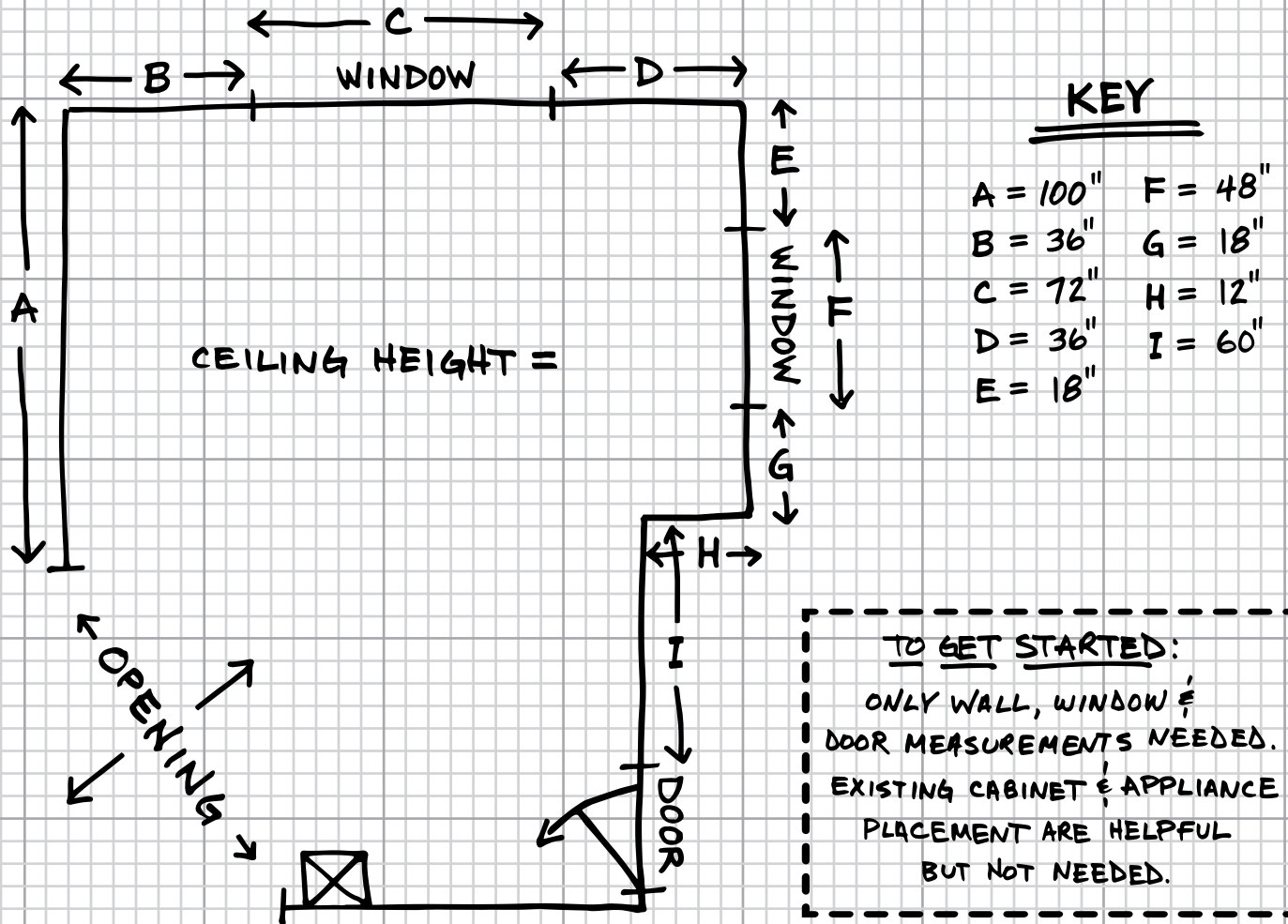
That's it! You're done! It is that easy to measure your kitchen.



YOUR INFO & SKETCH: EXAMPLE



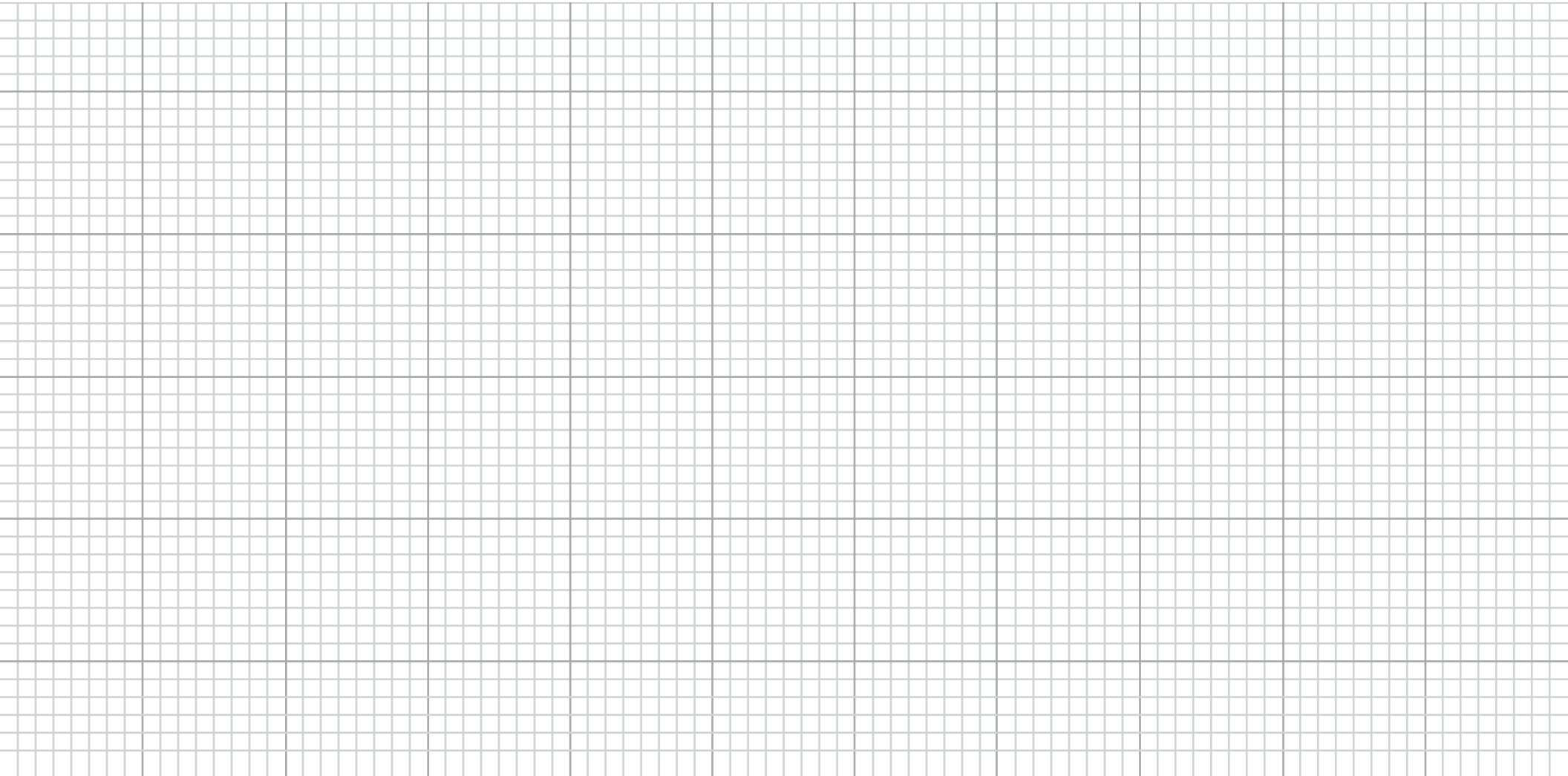
Name Jane Smith Door Style Dayton
 Email jsmith@email.com Finish Color Painted White
 Phone 555-123-4567 Who can we thank for your referral? John Jones



YOUR INFO & SKETCH



Name ----- Door Style -----
Email ----- Finish Color -----
Phone ----- Who can we thank for your referral? -----



SEND IT TO CLIQSTUDIOS

You're almost done. Just forward your information and measurements form to us.



EMAIL

designteam@cliqstudios.com

15 mb max per email, if larger please submit multiple emails.



SMART PHONE

Take pictures of the form and your drawing and email them to:

designteam@cliqstudios.com



WEBSITE

Use the web form at

www.cliqstudios.com/measuring-guide



FAX

[877-675-4394](tel:877-675-4394)



MAIL

CliqStudios Design Team

5600 West 83rd Street, Suite 400 – 8200 Tower,
Bloominton, MN 55437



Don't forget pictures!

A picture is worth a thousand words.
Send them along with your drawing.



Call us: 888-350-1242

Email: designteam@cliqstudios.com

 cliqstudios®