



Measuring Guide

BEFORE YOU START

Please be sure to view the CliqStudios Quick Start Measuring video that provides clear step-by-step instructions to help make measuring your kitchen simple and easy.

WATCH VIDEO »

step 3: measure

Now it's time to get out the tape measure. Measure all the openings, from outside edge to outside edge, and then fill in the key. If you're uncomfortable with precise measurements feel free to round to the nearest inch. Remember this is just to get started, your designer will confirm the details later.

KEY

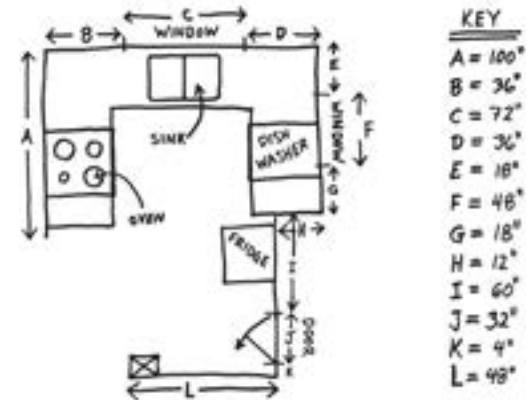
- A = 100"
- B =
- C =
- D =
- E =
- F =
- G =
- H =
- I =

cliqstudios.com.
The Designer Kitchen You Buy Online

IT'S EASY

Our Measuring Guide is easy to use (yes, it really is easy) and helps collect the basic information to help you and your designer start your design. This does not have to be a work of art but just a clear and accurate drawing of your space. If you want to use the attached graph paper, that's great. If not, then all we need is your drawing. We're here to help — please call [888-350-1242](tel:888-350-1242) with any questions.

- 1 Step 1: Your Kitchen Shape**
 Draw your kitchen as a box showing all the walls that you think will have cabinets. Be sure to include any major structural features or obstacles.
- 2 Step 2: Draw It Out**
 Mark any openings such as windows and doorways. Be sure to include radiators or other obstacles that affect where cabinets can be installed. Now, label all the openings in your kitchen. In this sketch we'll use areas "A" through "I". Record these letters as a key on your sketch.
- 3 Step 3: Measure**
 Now it's time to get out the tape measure. Measure all the openings, from outside edge to outside edge, and fill in the key. If you're uncomfortable with precise measurements feel free to round to the nearest inch. Remember this is just to get started, your designer will confirm details later.



4

Step 4: Your Layout

Most people already have a good idea of where the major items will go in their kitchen. Feel free to draw your ideas of what you would like and include the placement of your sink and appliances.

5

Step 5: Pictures of Your Kitchen

What can really help your designer is to take 'before' pictures of your kitchen and send them along with your measurements.

That's it! You're done! It is that easy to measure your kitchen.



Your Info & Sketch

Name _____

Door Style _____

Phone _____

Designer _____

Email _____

Kitchen Ceiling Height in Inches _____

The form consists of a large grid area for sketching. The grid is composed of small squares, with a larger 10x10 inch section highlighted in the bottom right corner. This section is intended for a detailed sketch of the kitchen ceiling height.

Drawing does not have to be perfect or to scale — just neat. Feel free to use any paper you want.

Send it to CliqStudios

You're almost done. Just forward your information and measurements form to us.



EMAIL
designteam@cliqstudios.com
3 MB max per email, if larger please submit multiple emails.



TEXT
Take pictures of the form and your drawing and text them to:
888-350-1242



WEBSITE
Use the web form at
www.cliqstudios.com/measuring-guide



MAIL
CliqStudios Design Team
5350 W. 78th Street
Edina, MN 55439



Don't forget pictures!

A picture is worth a thousand words.
Send them along with your drawing.